

Goat Anti-CAPZB Antibody
Peptide-affinity purified goat antibody
Catalog # AF1188a

Specification

Goat Anti-CAPZB Antibody - Product Information

Application	WB
Primary Accession	P47756
Other Accession	NP_004921 , 832 , 12345 (mouse)
Reactivity	Human, Rat
Predicted	Mouse, Pig, Dog, Cow
Host	Goat
Clonality	Polyclonal
Concentration	100ug/200ul
Isotype	IgG
Calculated MW	30629

Goat Anti-CAPZB Antibody - Additional Information

Gene ID 832

Other Names

F-actin-capping protein subunit beta, CapZ beta, CAPZB

Format

0.5 mg IgG/ml in Tris saline (20mM Tris pH7.3, 150mM NaCl), 0.02% sodium azide, with 0.5% bovine serum albumin

Storage

Maintain refrigerated at 2-8°C for up to 6 months. For long term storage store at -20°C in small aliquots to prevent freeze-thaw cycles.

Precautions

Goat Anti-CAPZB Antibody is for research use only and not for use in diagnostic or therapeutic procedures.

Goat Anti-CAPZB Antibody - Protein Information

Name CAPZB ([HGNC:1491](#))

Function

F-actin-capping proteins bind in a Ca(2+)-independent manner to the fast growing ends of actin filaments (barbed end) thereby blocking the exchange of subunits at these ends. Unlike other capping proteins (such as gelsolin and severin), these proteins do not sever actin filaments. Plays a role in the regulation of cell morphology and cytoskeletal organization. Forms, with CAPZB, the barbed end of the fast growing ends of actin filaments in the dynactin complex and stabilizes dynactin structure. The dynactin multiprotein complex activates the molecular motor dynein for

ultra-processive transport along microtubules (By similarity).

Cellular Location

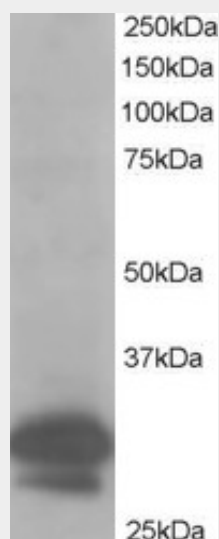
Cytoplasm, cytoskeleton {ECO:0000250|UniProtKB:A9XFX6}. Cytoplasm, myofibril, sarcomere {ECO:0000250|UniProtKB:A9XFX6}

Goat Anti-CAPZB Antibody - Protocols

Provided below are standard protocols that you may find useful for product applications.

- [Western Blot](#)
- [Blocking Peptides](#)
- [Dot Blot](#)
- [Immunohistochemistry](#)
- [Immunofluorescence](#)
- [Immunoprecipitation](#)
- [Flow Cytometry](#)
- [Cell Culture](#)

Goat Anti-CAPZB Antibody - Images



AF1188a staining (1 µg/ml) of Hela lysate (RIPA buffer, 35 µg total protein per lane). Primary incubated for 1 hour. Detected by western blot using chemiluminescence.

Goat Anti-CAPZB Antibody - Background

CAPZB is a member of the F-actin capping protein family. This gene encodes the beta subunit of the barbed-end actin binding protein. The protein regulates growth of the actin filament by capping the barbed end of growing actin filaments.

Goat Anti-CAPZB Antibody - References

Personalized smoking cessation: interactions between nicotine dose, dependence and quit-success genotype score. Rose JE, et al. Mol Med, 2010 Jul-Aug. PMID 20379614.
The Arp2/3 activator WASH controls the fission of endosomes through a large multiprotein complex. Derivery E, et al. Dev Cell, 2009 Nov. PMID 19922875.
Defining the human deubiquitinating enzyme interaction landscape. Sowa ME, et al. Cell, 2009 Jul

23. PMID 19615732.

Systematic analysis of the protein interaction network for the human transcription machinery reveals the identity of the 7SK capping enzyme. Jeronimo C, et al. Mol Cell, 2007 Jul 20. PMID 17643375.

Large-scale mapping of human protein-protein interactions by mass spectrometry. Ewing RM, et al. Mol Syst Biol, 2007. PMID 17353931.