

Goat Anti-CBX3 / HP1 Gamma Antibody
Peptide-affinity purified goat antibody
Catalog # AF1204a**Specification**

Goat Anti-CBX3 / HP1 Gamma Antibody - Product Information

Application	WB, IHC
Primary Accession	Q13185
Other Accession	NP_057671 , 11335 , 12417 (mouse) , 297093 (rat)
Reactivity	Human, Mouse
Predicted	Rat, Dog
Host	Goat
Clonality	Polyclonal
Concentration	100ug/200ul
Isotype	IgG
Calculated MW	20811

Goat Anti-CBX3 / HP1 Gamma Antibody - Additional Information**Gene ID** 11335**Other Names**

Chromobox protein homolog 3, HECH, Heterochromatin protein 1 homolog gamma, HP1 gamma, Modifier 2 protein, CBX3

Format

0.5 mg IgG/ml in Tris saline (20mM Tris pH7.3, 150mM NaCl), 0.02% sodium azide, with 0.5% bovine serum albumin

Storage

Maintain refrigerated at 2-8°C for up to 6 months. For long term storage store at -20°C in small aliquots to prevent freeze-thaw cycles.

Precautions

Goat Anti-CBX3 / HP1 Gamma Antibody is for research use only and not for use in diagnostic or therapeutic procedures.

Goat Anti-CBX3 / HP1 Gamma Antibody - Protein Information**Name** CBX3**Function**

Seems to be involved in transcriptional silencing in heterochromatin-like complexes. Recognizes and binds histone H3 tails methylated at 'Lys-9', leading to epigenetic repression. May contribute to the association of the heterochromatin with the inner nuclear membrane through its interaction with lamin B receptor (LBR). Involved in the formation of functional kinetochore through

interaction with MIS12 complex proteins. Contributes to the conversion of local chromatin to a heterochromatin-like repressive state through H3 'Lys-9' trimethylation, mediates the recruitment of the methyltransferases SUV39H1 and/or SUV39H2 by the PER complex to the E-box elements of the circadian target genes such as PER2 itself or PER1. Mediates the recruitment of NIPBL to sites of DNA damage at double-strand breaks (DSBs) (PubMed:28167679).

Cellular Location

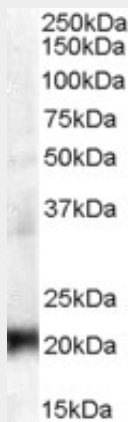
Nucleus. Note=Associates with euchromatin and is largely excluded from constitutive heterochromatin. May be associated with microtubules and mitotic poles during mitosis (Potential).

Goat Anti-CBX3 / HP1 Gamma Antibody - Protocols

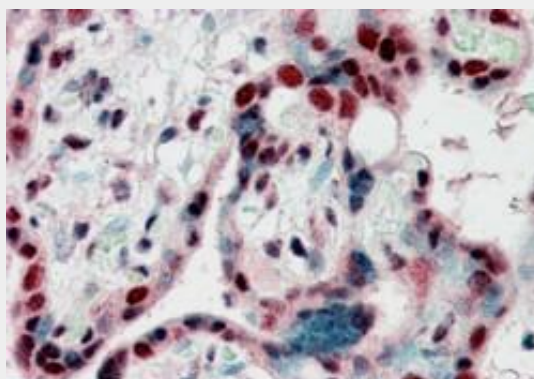
Provided below are standard protocols that you may find useful for product applications.

- [Western Blot](#)
- [Blocking Peptides](#)
- [Dot Blot](#)
- [Immunohistochemistry](#)
- [Immunofluorescence](#)
- [Immunoprecipitation](#)
- [Flow Cytometry](#)
- [Cell Culture](#)

Goat Anti-CBX3 / HP1 Gamma Antibody - Images



AF1204a (0.3 µg/ml) staining of A431 lysate (35 µg protein in RIPA buffer). Primary incubation was 1 hour. Detected by chemiluminescence.



AF1204a (2.5 µg/ml) staining of paraffin embedded Human Placenta. Steamed antigen retrieval with citrate buffer pH 6, AP-staining.