

Goat Anti-CD274 / PD-L1 Antibody
Peptide-affinity purified goat antibody
Catalog # AF1215a**Specification**

Goat Anti-CD274 / PD-L1 Antibody - Product Information

Application	FC, WB, IHC, IF
Primary Accession	O9NZQ7
Other Accession	NP_054862 , 29126
Reactivity	Human
Host	Goat
Clonality	Polyclonal
Concentration	0.5mg/ml
Isotype	IgG
Calculated MW	33275

Goat Anti-CD274 / PD-L1 Antibody - Additional Information**Gene ID** 29126**Other Names**

Programmed cell death 1 ligand 1, PD-L1, PDCD1 ligand 1, Programmed death ligand 1, B7 homolog 1, B7-H1, CD274, CD274, B7H1, PDCD1L1, PDCD1LG1, PDL1

Format

0.5 mg IgG/ml in Tris saline (20mM Tris pH7.3, 150mM NaCl), 0.02% sodium azide, with 0.5% bovine serum albumin

Storage

Maintain refrigerated at 2-8°C for up to 6 months. For long term storage store at -20°C in small aliquots to prevent freeze-thaw cycles.

Precautions

Goat Anti-CD274 / PD-L1 Antibody is for research use only and not for use in diagnostic or therapeutic procedures.

Goat Anti-CD274 / PD-L1 Antibody - Protein Information**Name** CD274 ([HGNC:17635](#))**Function**

Plays a critical role in induction and maintenance of immune tolerance to self (PubMed:11015443, PubMed:28813417, PubMed:28813410). As a ligand for the inhibitory receptor PDCD1/PD-1, modulates the activation threshold of T-cells and limits T-cell effector response (PubMed:11015443)

target="_blank">11015443, PubMed:28813417, PubMed:28813410). Through a yet unknown activating receptor, may costimulate T-cell subsets that predominantly produce interleukin-10 (IL10) (PubMed:10581077). Can also act as a transcription coactivator: in response to hypoxia, translocates into the nucleus via its interaction with phosphorylated STAT3 and promotes transcription of GSDMC, leading to pyroptosis (PubMed:32929201).

Cellular Location

Cell membrane; Single-pass type I membrane protein. Early endosome membrane; Single-pass type I membrane protein. Recycling endosome membrane; Single-pass type I membrane protein. Nucleus. Note=Associates with CMTM6 at recycling endosomes, where it is protected from being targeted for lysosomal degradation (PubMed:28813417). Translocates to the nucleus in response to hypoxia via its interaction with phosphorylated STAT3 (PubMed:32929201). [Isoform 2]: Endomembrane system; Single-pass type I membrane protein

Tissue Location

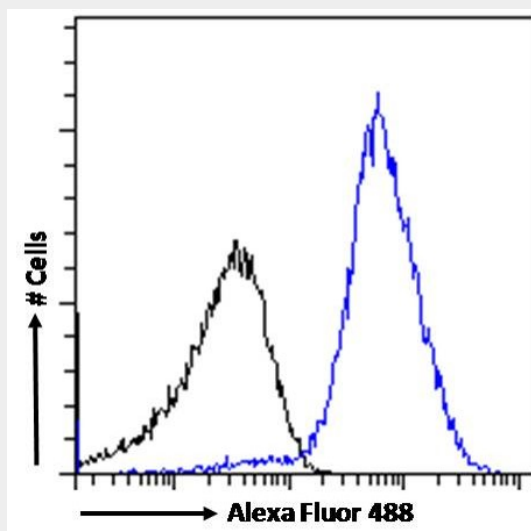
Highly expressed in the heart, skeletal muscle, placenta and lung. Weakly expressed in the thymus, spleen, kidney and liver. Expressed on activated T- and B-cells, dendritic cells, keratinocytes and monocytes.

Goat Anti-CD274 / PD-L1 Antibody - Protocols

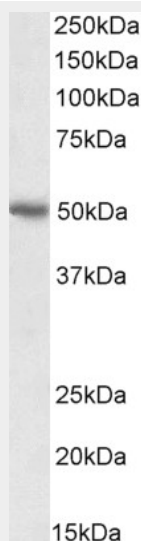
Provided below are standard protocols that you may find useful for product applications.

- [Western Blot](#)
- [Blocking Peptides](#)
- [Dot Blot](#)
- [Immunohistochemistry](#)
- [Immunofluorescence](#)
- [Immunoprecipitation](#)
- [Flow Cytometry](#)
- [Cell Culture](#)

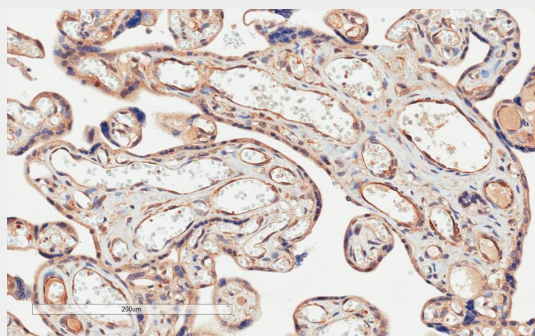
Goat Anti-CD274 / PD-L1 Antibody - Images



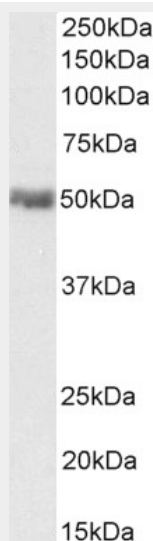
AF1215a Flow cytometric analysis of paraformaldehyde fixed Jurkat cells (blue line), permeabilized with 0.5% Triton. Primary incubation 1hr (10ug/ml) followed by Alexa Fluor 488 secondary antibody (1ug/ml). IgG control: Unimmunized goat IgG (black line) f



AF1215a (0.01µg/ml) staining of Human Heart lysate (35µg protein in RIPA buffer). Detected by chemiluminescence.

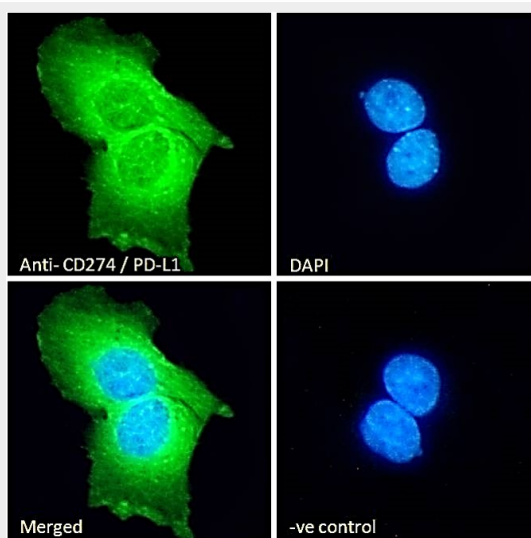


AF1215a (2µg/ml) staining of paraffin embedded Human Placenta. Microwaved antigen retrieval with citrate buffer pH 6, HRP-staining. **This data is from a previous batch, not on sale.**

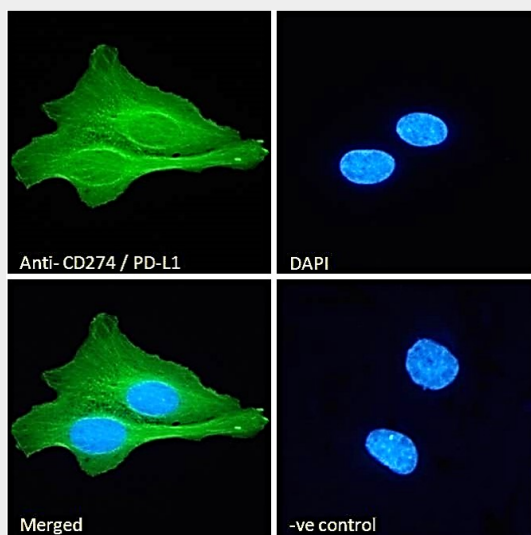


AF1215a (0.1µg/ml) staining of U2OS cell lysate (35µg protein in RIPA buffer). Detected by

chemiluminescence.



AF1215a Immunofluorescence analysis of paraformaldehyde fixed AA431 cells, permeabilized with 0.15% Triton. Primary incubation 1hr (10ug/ml) followed by Alexa Fluor 488 secondary antibody (2ug/ml), showing cytoplasmic staining. The nuclear stain is DAPI (



AF1215a Immunofluorescence analysis of paraformaldehyde fixed U2OS cells, permeabilized with 0.15% Triton. Primary incubation 1hr (10ug/ml) followed by Alexa Fluor 488 secondary antibody (2ug/ml), showing membrane and cytoplasmic staining. The nuclear sta

Goat Anti-CD274 / PD-L1 Antibody - References

An approach based on a genome-wide association study reveals candidate loci for narcolepsy. Shimada M, et al. Hum Genet, 2010 Oct. PMID 20677014.

Role played by the programmed death-1-programmed death ligand pathway during innate immunity against Mycobacterium tuberculosis. Alvarez IB, et al. J Infect Dis, 2010 Aug 15. PMID 20617899.

The programmed death 1/programmed death ligand 1 inhibitory pathway is up-regulated in rheumatoid synovium and regulates peripheral T cell responses in human and murine arthritis. Raptopoulou AP, et al. Arthritis Rheum, 2010 Jul. PMID 20506224.

[Expression of B7-H1 on peripheral myeloid dendritic cells in patients with HIV infection and its correlation with diseases progression] Wang XC, et al. Zhonghua Yi Xue Za Zhi, 2010 Mar 9. PMID 20450779.

PD-1 on immature and PD-1 ligands on migratory human Langerhans cells regulate antigen-presenting cell activity. Peña-Cruz V, et al. J Invest Dermatol, 2010 Sep. PMID 20445553.