

Goat Anti-Clk1 / STK35 Antibody
Peptide-affinity purified goat antibody
Catalog # AF1250a**Specification**

Goat Anti-Clk1 / STK35 Antibody - Product Information

Application	IHC, WB
Primary Accession	Q8TDR2
Other Accession	NP_543026 , 140901 , 67333 (mouse)
Reactivity	Human
Predicted	Mouse, Rat, Pig, Dog, Cow
Host	Goat
Clonality	Polyclonal
Concentration	100ug/200ul
Isotype	IgG
Calculated MW	58051

Goat Anti-Clk1 / STK35 Antibody - Additional Information**Gene ID** 140901**Other Names**

Serine/threonine-protein kinase 35, 2.7.11.1, CLP-36-interacting kinase 1, CLIK-1, PDLIM1-interacting kinase 1, Serine/threonine-protein kinase 35 L1, STK35, CLIK1, PDIK1, STK35L1

Format

0.5 mg IgG/ml in Tris saline (20mM Tris pH7.3, 150mM NaCl), 0.02% sodium azide, with 0.5% bovine serum albumin

Storage

Maintain refrigerated at 2-8°C for up to 6 months. For long term storage store at -20°C in small aliquots to prevent freeze-thaw cycles.

Precautions

Goat Anti-Clk1 / STK35 Antibody is for research use only and not for use in diagnostic or therapeutic procedures.

Goat Anti-Clk1 / STK35 Antibody - Protein Information**Name** STK35**Synonyms** CLIK1, PDIK1, STK35L1**Cellular Location**

Nucleus. Nucleus, nucleolus. Cytoplasm. Note=When associated with PDLIM1, it is mostly found in cytoplasm, localized to actin stress fibers (PubMed:11973348). However, PubMed:19756140 detected STK35 only in the nucleus, and the presence of PDLIM1 had no influence on its location.

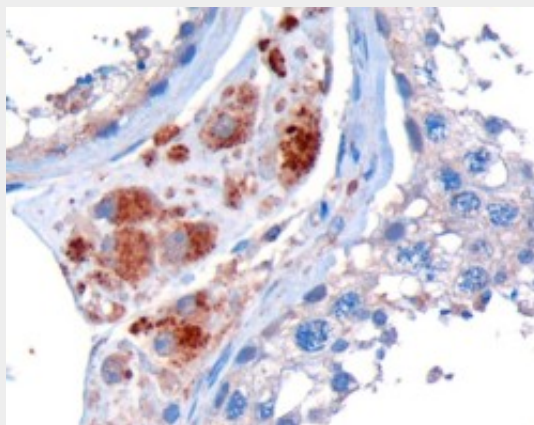
Tissue Location
Expressed in testis.

Goat Anti-Clik1 / STK35 Antibody - Protocols

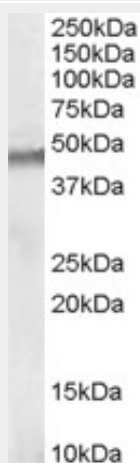
Provided below are standard protocols that you may find useful for product applications.

- [Western Blot](#)
- [Blocking Peptides](#)
- [Dot Blot](#)
- [Immunohistochemistry](#)
- [Immunofluorescence](#)
- [Immunoprecipitation](#)
- [Flow Cytometry](#)
- [Cell Culture](#)

Goat Anti-Clik1 / STK35 Antibody - Images



AF1250a (10 µg/ml) staining of paraffin embedded Human Testis. Microwaved antigen retrieval with Tris/EDTA buffer pH9, HRP-staining.



AF1250a (1 µg/ml) staining of human testis lysate (35 µg protein in RIPA buffer). Primary incubation was 1 hour. Detected by chemiluminescence.

Goat Anti-Clik1 / STK35 Antibody - Background

The protein encoded by this gene is a kinase that is predominantly found in the nucleus. However, it can interact with PDLIM1/CLP-36 in the cytoplasm and localize to actin stress fibers. The encoded protein may be a regulator of actin stress fibers in nonmuscle cells.

Goat Anti-Clik1 / STK35 Antibody - References

Identifying and characterizing a novel protein kinase STK35L1 and deciphering its orthologs and close-homologs in vertebrates. Goyal P, et al. PLoS One, 2009 Sep 16. PMID 19756140.
High-throughput mapping of a dynamic signaling network in mammalian cells. Barrios-Rodiles M, et al. Science, 2005 Mar 11. PMID 15761153.
The status, quality, and expansion of the NIH full-length cDNA project: the Mammalian Gene Collection (MGC). Gerhard DS, et al. Genome Res, 2004 Oct. PMID 15489334.
Complete sequencing and characterization of 21,243 full-length human cDNAs. Ota T, et al. Nat Genet, 2004 Jan. PMID 14702039.
Generation and initial analysis of more than 15,000 full-length human and mouse cDNA sequences. Strausberg RL, et al. Proc Natl Acad Sci U S A, 2002 Dec 24. PMID 12477932.