

Goat Anti-CLIM1 / PDLIM1 Antibody
Peptide-affinity purified goat antibody
Catalog # AF1251a**Specification**

Goat Anti-CLIM1 / PDLIM1 Antibody - Product Information

Application	WB
Primary Accession	O00151
Other Accession	NP_066272 , 9124
Reactivity	Human
Host	Goat
Clonality	Polyclonal
Concentration	100ug/200ul
Isotype	IgG
Calculated MW	36072

Goat Anti-CLIM1 / PDLIM1 Antibody - Additional Information**Gene ID** 9124**Other Names**

PDZ and LIM domain protein 1, C-terminal LIM domain protein 1, Elfin, LIM domain protein CLP-36, PDLIM1, CLIM1, CLP36

Format

0.5 mg IgG/ml in Tris saline (20mM Tris pH7.3, 150mM NaCl), 0.02% sodium azide, with 0.5% bovine serum albumin

Storage

Maintain refrigerated at 2-8°C for up to 6 months. For long term storage store at -20°C in small aliquots to prevent freeze-thaw cycles.

Precautions

Goat Anti-CLIM1 / PDLIM1 Antibody is for research use only and not for use in diagnostic or therapeutic procedures.

Goat Anti-CLIM1 / PDLIM1 Antibody - Protein Information**Name** PDLIM1**Synonyms** CLIM1, CLP36**Function**Cytoskeletal protein that may act as an adapter that brings other proteins (like kinases) to the cytoskeleton (PubMed: <http://www.uniprot.org/citations/10861853> target="_blank">10861853). Involved in assembly, disassembly and directioning of stress fibers in fibroblasts. Required for the localization of ACTN1 and PALLD to stress fibers. Required for

cell migration and in maintaining cell polarity of fibroblasts (By similarity).

Cellular Location

Cytoplasm. Cytoplasm, cytoskeleton. Cytoplasm, myofibril, sarcomere, Z line Note=Associates with actin stress fibers

Tissue Location

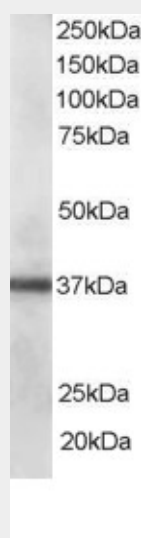
Strongly expressed in the heart and skeletal muscle, moderately expressed in the spleen, small intestine, colon, placenta, and lung. A lower level expression is seen in liver, thymus, kidney, prostate and pancreas and is not found in the brain, testis, ovary, and peripheral blood leukocytes

Goat Anti-CLIM1 / PDLIM1 Antibody - Protocols

Provided below are standard protocols that you may find useful for product applications.

- [Western Blot](#)
- [Blocking Peptides](#)
- [Dot Blot](#)
- [Immunohistochemistry](#)
- [Immunofluorescence](#)
- [Immunoprecipitation](#)
- [Flow Cytometry](#)
- [Cell Culture](#)

Goat Anti-CLIM1 / PDLIM1 Antibody - Images



AF1251a staining (0.1 µg/ml) of human lung lysate (RIPA buffer, 35 µg total protein per lane). Primary incubated for 1 hour. Detected by western blot using chemiluminescence.

Goat Anti-CLIM1 / PDLIM1 Antibody - References

Transcriptomic and genetic studies identify IL-33 as a candidate gene for Alzheimer's disease. Chapuis J, et al. Mol Psychiatry, 2009 Nov. PMID 19204726.
Regulation of estrogen-dependent transcription by the LIM cofactors CLIM and RLIM in breast cancer. Johnsen SA, et al. Cancer Res, 2009 Jan 1. PMID 19117995.
Refined genomic localization and ethnic differences observed for the IBD5 association with Crohn's disease. Silverberg MS, et al. Eur J Hum Genet, 2007 Mar. PMID 17213842.

Expression of the actin stress fiber-associated protein CLP36 in the human placenta. Mieh U, et al. Histochem Cell Biol, 2006 Oct. PMID 16609848.

A scan of chromosome 10 identifies a novel locus showing strong association with late-onset Alzheimer disease. Grupe A, et al. Am J Hum Genet, 2006 Jan. PMID 16385451.