

**Goat Anti-DAZL Antibody**  
Peptide-affinity purified goat antibody  
Catalog # AF1303a

**Specification**

---

**Goat Anti-DAZL Antibody - Product Information**

Application	IHC, WB
Primary Accession	<a href="#">O92904</a>
Other Accession	<a href="#">NP_001342</a> , <a href="#">1618</a>
Reactivity	Human, Mouse
Predicted	Rat, Dog, Cow
Host	Goat
Clonality	Polyclonal
Concentration	100ug/200ul
Isotype	IgG
Calculated MW	33178

**Goat Anti-DAZL Antibody - Additional Information**

**Gene ID** 1618

**Other Names**

Deleted in azoospermia-like, DAZ homolog, DAZ-like autosomal, Deleted in azoospermia-like 1, SPGY-like-autosomal, DAZL, DAZH, DAZL1, DAZLA, SPGYLA

**Format**

0.5 mg IgG/ml in Tris saline (20mM Tris pH7.3, 150mM NaCl), 0.02% sodium azide, with 0.5% bovine serum albumin

**Storage**

Maintain refrigerated at 2-8°C for up to 6 months. For long term storage store at -20°C in small aliquots to prevent freeze-thaw cycles.

**Precautions**

Goat Anti-DAZL Antibody is for research use only and not for use in diagnostic or therapeutic procedures.

**Goat Anti-DAZL Antibody - Protein Information**

**Name** DAZL

**Synonyms** DAZH, DAZL1, DAZLA, SPGYLA

**Function**

RNA-binding protein, which is essential for gametogenesis in both males and females. Plays a central role during spermatogenesis. Acts by binding to the 3'-UTR of mRNA, specifically recognizing GUU triplets, and thereby regulating the translation of key transcripts (By similarity).

**Cellular Location**

Cytoplasm. Nucleus. Note=Predominantly cytoplasmic. Nuclear in spermatogonia until near the end of the meiotic prophase and cytoplasmic localization from then onward.

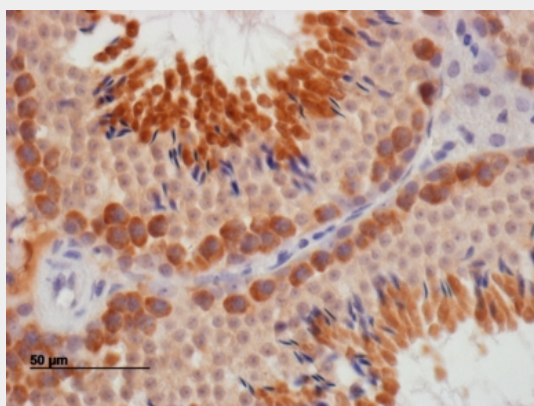
**Tissue Location**

Testis specific.

**Goat Anti-DAZL Antibody - Protocols**

Provided below are standard protocols that you may find useful for product applications.

- [Western Blot](#)
- [Blocking Peptides](#)
- [Dot Blot](#)
- [Immunohistochemistry](#)
- [Immunofluorescence](#)
- [Immunoprecipitation](#)
- [Flow Cytometry](#)
- [Cell Culture](#)

**Goat Anti-DAZL Antibody - Images**

AF1303a staining of paraffin embedded Mouse Testis.



AF1303a (0.1  $\mu\text{g/ml}$ ) staining of human ovary lysate (35  $\mu\text{g}$  protein in RIPA buffer). Primary incubation was 1 hour. Detected by chemiluminescence.

**Goat Anti-DAZL Antibody - Background**

The DAZ (Deleted in AZoospermia) gene family encodes potential RNA binding proteins that are expressed in prenatal and postnatal germ cells of males and females. The protein encoded by this gene is localized to the nucleus and cytoplasm of fetal germ cells and to the cytoplasm of developing oocytes. In the testis, this protein is localized to the nucleus of spermatogonia but relocates to the cytoplasm during meiosis where it persists in spermatids and spermatozoa. Transposition and amplification of this autosomal gene during primate evolution gave rise to the DAZ gene cluster on the Y chromosome. Mutations in this gene have been linked to severe spermatogenic failure and infertility in males. Two transcript variants encoding different isoforms have been found for this gene.

#### **Goat Anti-DAZL Antibody - References**

The dazzle in germ cell differentiation. Kerr CL, et al. J Mol Cell Biol, 2010 Feb. PMID 20008336.  
A386G polymorphism of the DAZL gene is not associated with idiopathic male infertility in North India. Singh K, et al. J Hum Reprod Sci, 2009 Jul. PMID 19881148.  
Human DAZL, DAZ and BOULE genes modulate primordial germ-cell and haploid gamete formation. Kee K, et al. Nature, 2009 Nov 12. PMID 19865085.  
Phenotypic expression of partial AZFc deletions is independent of the variations in DAZL and BOULE in a Han population. Chen P, et al. J Androl, 2010 Mar-Apr. PMID 19342699.  
A method for isolating pluripotent/multipotent stem cells from blood by using the pluripotent and germ-line DAZL gene as a marker. Seligman J, et al. Stem Cells Dev, 2009 Nov. PMID 19327014.