

Goat Anti-Dcdc2a Antibody
Peptide-affinity purified goat antibody
Catalog # AF1306a**Specification**

Goat Anti-Dcdc2a Antibody - Product Information

Application	WB
Primary Accession	O9UHG0
Other Accession	NP_808245 , 51473 , 195208 (mouse) , 291130 (rat)
Reactivity	Mouse
Predicted	Human, Rat
Host	Goat
Clonality	Polyclonal
Concentration	100ug/200ul
Isotype	IgG
Calculated MW	52834

Goat Anti-Dcdc2a Antibody - Additional Information**Gene ID** 51473**Other Names**

Doublecortin domain-containing protein 2, Protein RU2S, DCDC2, KIAA1154, RU2

Format

0.5 mg IgG/ml in Tris saline (20mM Tris pH7.3, 150mM NaCl), 0.02% sodium azide, with 0.5% bovine serum albumin

Storage

Maintain refrigerated at 2-8°C for up to 6 months. For long term storage store at -20°C in small aliquots to prevent freeze-thaw cycles.

Precautions

Goat Anti-Dcdc2a Antibody is for research use only and not for use in diagnostic or therapeutic procedures.

Goat Anti-Dcdc2a Antibody - Protein Information**Name** DCDC2**Synonyms** KIAA1154, RU2**Function**

Protein that plays a role in the inhibition of canonical Wnt signaling pathway (PubMed:25557784). May be involved in neuronal migration during development of the cerebral neocortex (By similarity).

Involved in the control of ciliogenesis and ciliary length (PubMed:25601850, PubMed:27319779).

Cellular Location

Cell projection, cilium. Cytoplasm, cytoskeleton, cilium axoneme. Cell projection, kinocilium {ECO:0000250|UniProtKB:D3ZR10}. Cytoplasm, cytoskeleton {ECO:0000250|UniProtKB:D3ZR10}. Note=Localizes to the ciliary axoneme and to mitotic spindle fibers in a cell-cycle-dependent manner

Tissue Location

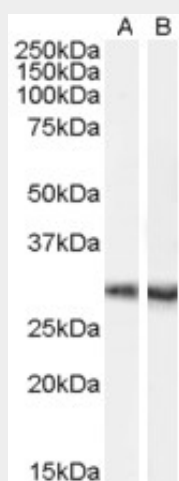
Ubiquitously expressed. In brain, highly expressed in the entorhinal cortex, inferior temporal cortex, medial temporal cortex, hypothalamus, amygdala and hippocampus (PubMed:10601354, PubMed:16278297). Expressed in liver by cholangiocytes, the epithelial cells of the bile ducts (at protein level) (PubMed:27319779)

Goat Anti-Dcdc2a Antibody - Protocols

Provided below are standard protocols that you may find useful for product applications.

- [Western Blot](#)
- [Blocking Peptides](#)
- [Dot Blot](#)
- [Immunohistochemistry](#)
- [Immunofluorescence](#)
- [Immunoprecipitation](#)
- [Flow Cytometry](#)
- [Cell Culture](#)

Goat Anti-Dcdc2a Antibody - Images



Staining of mouse brain lysate (35 µg protein in RIPA buffer) with A) AF1306a (0.1 µg/ml) and B) AF1305a. Primary incubation was 1 hour. Detected by chemiluminescence.

Goat Anti-Dcdc2a Antibody - Background

This gene encodes a member of the doublecortin family. The protein encoded by this gene contains two doublecortin domains. The doublecortin domain has been demonstrated to bind tubulin and enhance microtubule polymerization. Alternatively spliced transcript variants encoding

distinct isoforms have been found for this gene.

Goat Anti-Dcdc2a Antibody - References

The doublecortin gene family and disorders of neuronal structure. Dijkmans TF, et al. Cent Nerv Syst Agents Med Chem, 2010 Mar. PMID 20236041.

The evolving doublecortin (DCX) superfamily. Reiner O, et al. BMC Genomics, 2006 Jul 26. PMID 16869982.

Common and divergent roles for members of the mouse DCX superfamily. Coquelle FM, et al. Cell Cycle, 2006 May. PMID 16628014.

Antisense transcription in the mammalian transcriptome. Katayama S, et al. Science, 2005 Sep 2. PMID 16141073.

The transcriptional landscape of the mammalian genome. Carninci P, et al. Science, 2005 Sep 2. PMID 16141072.