

Goat Anti-FOXL2 / BPES Antibody
Peptide-affinity purified goat antibody
Catalog # AF1432a**Specification**

Goat Anti-FOXL2 / BPES Antibody - Product Information

Application	WB, IHC
Primary Accession	P58012
Other Accession	NP_075555 , 668 , 26927 (mouse)
Reactivity	Human, Mouse
Predicted	Rat, Cow
Host	Goat
Clonality	Polyclonal
Concentration	100ug/200ul
Isotype	IgG
Calculated MW	38772

Goat Anti-FOXL2 / BPES Antibody - Additional Information**Gene ID** 668**Other Names**

Forkhead box protein L2, FOXL2

Format

0.5 mg IgG/ml in Tris saline (20mM Tris pH7.3, 150mM NaCl), 0.02% sodium azide, with 0.5% bovine serum albumin

Storage

Maintain refrigerated at 2-8°C for up to 6 months. For long term storage store at -20°C in small aliquots to prevent freeze-thaw cycles.

Precautions

Goat Anti-FOXL2 / BPES Antibody is for research use only and not for use in diagnostic or therapeutic procedures.

Goat Anti-FOXL2 / BPES Antibody - Protein Information**Name** FOXL2**Function**

Transcriptional regulator. Critical factor essential for ovary differentiation and maintenance, and repression of the genetic program for somatic testis determination. Prevents trans- differentiation of ovary to testis through transcriptional repression of the Sertoli cell-promoting gene SOX9 (By similarity). Has apoptotic activity in ovarian cells. Suppresses ESR1-mediated transcription of PTGS2/COX2 stimulated by tamoxifen (By similarity). Is a regulator of CYP19 expression (By similarity). Participates in SMAD3-dependent transcription of FST via the intronic SMAD-binding

element (By similarity). Is a transcriptional repressor of STAR. Activates SIRT1 transcription under cellular stress conditions. Activates transcription of OSR2.

Cellular Location

Nucleus {ECO:0000255|PROSITE-ProRule:PRU00089, ECO:0000269|PubMed:19744555}

Tissue Location

In addition to its expression in the developing eyelid, it is transcribed very early in somatic cells of the developing gonad (before sex determination) and its expression persists in the follicular cells of the adult ovary

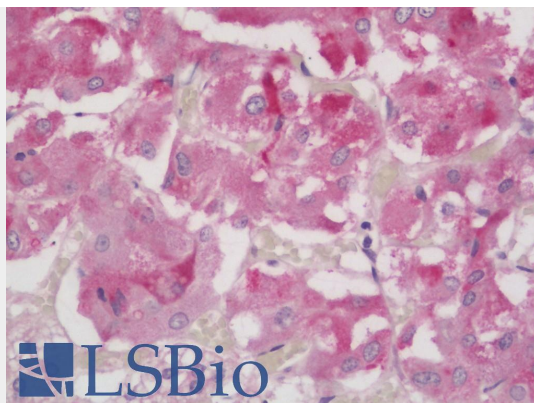
Goat Anti-FOXL2 / BPES Antibody - Protocols

Provided below are standard protocols that you may find useful for product applications.

- [Western Blot](#)
- [Blocking Peptides](#)
- [Dot Blot](#)
- [Immunohistochemistry](#)
- [Immunofluorescence](#)
- [Immunoprecipitation](#)
- [Flow Cytometry](#)
- [Cell Culture](#)

Goat Anti-FOXL2 / BPES Antibody - Images

AF1432a (0.3µg/ml) staining of Mouse Ovary lysate (35µg protein in RIPA buffer). Detected by chemiluminescence.



AF1432a (5µg/ml) staining of paraffin embedded Human Adrenal Gland. Steamed antigen retrieval with citrate buffer pH 6, AP-staining. **This data is from a previous batch, not on sale.**

Goat Anti-FOXL2 / BPES Antibody - Background

This gene encodes a forkhead transcription factor. The protein contains a fork-head DNA-binding domain and may play a role in ovarian development and function. Mutations in this gene are a cause of blepharophimosis syndrome and premature ovarian failure 3.

Goat Anti-FOXL2 / BPES Antibody - References

FOXL2 mutation in granulosa-cell tumours of the ovary. Kim T, et al. Histopathology, 2010 Feb. PMID 20459545.

Revisiting reproduction: What a difference a gene makes. Murphy BD. Nat Med, 2010 May. PMID 20448577.

FoxL2 is required for activin induction of the mouse and human follicle-stimulating hormone beta-subunit genes. Corpuz PS, et al. Mol Endocrinol, 2010 May. PMID 20233786.

Mutation analysis of FOXL2 gene in Chinese patients with premature ovarian failure. Ni F, et al. Gynecol Endocrinol, 2010 Apr. PMID 20222838.

FOXL2 interacts with steroidogenic factor-1 (SF-1) and represses SF-1-induced CYP17 transcription in granulosa cells. Park M, et al. Mol Endocrinol, 2010 May. PMID 20207836.