

Goat Anti-FYN Antibody
Peptide-affinity purified goat antibody
Catalog # AF1451a**Specification**

Goat Anti-FYN Antibody - Product Information

Application	WB
Primary Accession	P06241
Other Accession	NP_694593 , 2534 , 14360 (mouse) , 25150 (rat)
Reactivity	Human, Mouse
Predicted	Rat, Pig, Dog, Cow
Host	Goat
Clonality	Polyclonal
Concentration	100ug/200ul
Isotype	IgG
Calculated MW	60762

Goat Anti-FYN Antibody - Additional Information**Gene ID** 2534**Other Names**

Tyrosine-protein kinase Fyn, 2.7.10.2, Proto-oncogene Syn, Proto-oncogene c-Fyn, Src-like kinase, SLK, p59-Fyn, FYN

Format

0.5 mg IgG/ml in Tris saline (20mM Tris pH7.3, 150mM NaCl), 0.02% sodium azide, with 0.5% bovine serum albumin

Storage

Maintain refrigerated at 2-8°C for up to 6 months. For long term storage store at -20°C in small aliquots to prevent freeze-thaw cycles.

Precautions

Goat Anti-FYN Antibody is for research use only and not for use in diagnostic or therapeutic procedures.

Goat Anti-FYN Antibody - Protein Information**Name** FYN**Function**

Non-receptor tyrosine-protein kinase that plays a role in many biological processes including regulation of cell growth and survival, cell adhesion, integrin-mediated signaling, cytoskeletal remodeling, cell motility, immune response and axon guidance. Inactive FYN is phosphorylated on its C-terminal tail within the catalytic domain. Following activation by PKA, the protein subsequently associates with PTK2/FAK1, allowing PTK2/FAK1 phosphorylation, activation and

targeting to focal adhesions. Involved in the regulation of cell adhesion and motility through phosphorylation of CTNNB1 (beta- catenin) and CTNND1 (delta-catenin). Regulates cytoskeletal remodeling by phosphorylating several proteins including the actin regulator WAS and the microtubule-associated proteins MAP2 and MAPT. Promotes cell survival by phosphorylating AGAP2/PIKE-A and preventing its apoptotic cleavage. Participates in signal transduction pathways that regulate the integrity of the glomerular slit diaphragm (an essential part of the glomerular filter of the kidney) by phosphorylating several slit diaphragm components including NPHS1, KIRREL1 and TRPC6. Plays a role in neural processes by phosphorylating DPYSL2, a multifunctional adapter protein within the central nervous system, ARHGAP32, a regulator for Rho family GTPases implicated in various neural functions, and SNCA, a small pre-synaptic protein. Participates in the downstream signaling pathways that lead to T-cell differentiation and proliferation following T-cell receptor (TCR) stimulation. Phosphorylates PTK2B/PYK2 in response to T-cell receptor activation. Also participates in negative feedback regulation of TCR signaling through phosphorylation of PAG1, thereby promoting interaction between PAG1 and CSK and recruitment of CSK to lipid rafts. CSK maintains LCK and FYN in an inactive form. Promotes CD28-induced phosphorylation of VAV1. In mast cells, phosphorylates CLNK after activation of immunoglobulin epsilon receptor signaling (By similarity).

Cellular Location

Cytoplasm. Nucleus Cell membrane. Perikaryon {ECO:0000250|UniProtKB:Q62844} Note=Present and active in lipid rafts (PubMed:12218089) Palmitoylation is crucial for proper trafficking (PubMed:8206991)

Tissue Location

Isoform 1 is highly expressed in the brain. Isoform 2 is expressed in cells of hemopoietic lineages, especially T- lymphocytes.

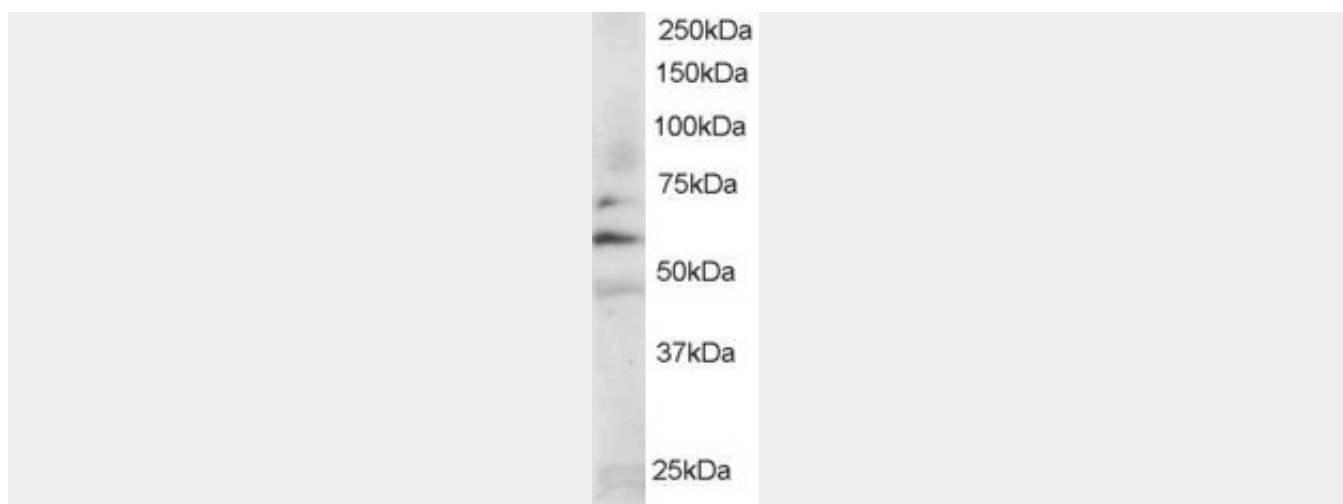
Goat Anti-FYN Antibody - Protocols

Provided below are standard protocols that you may find useful for product applications.

- [Western Blot](#)
- [Blocking Peptides](#)
- [Dot Blot](#)
- [Immunohistochemistry](#)
- [Immunofluorescence](#)
- [Immunoprecipitation](#)
- [Flow Cytometry](#)
- [Cell Culture](#)

Goat Anti-FYN Antibody - Images





AF1451a staining 0.2 µg/ml) of Jurkat lysate (RIPA buffer, 35 µg total protein per lane). Primary incubated for 1 hour. Detected by western blot using chemiluminescence.

Goat Anti-FYN Antibody - Background

This gene is a member of the protein-tyrosine kinase oncogene family. It encodes a membrane-associated tyrosine kinase that has been implicated in the control of cell growth. The protein associates with the p85 subunit of phosphatidylinositol 3-kinase and interacts with the fyn-binding protein. Alternatively spliced transcript variants encoding distinct isoforms exist.

Goat Anti-FYN Antibody - References

Expression of Fyn kinase modulates EMT in oral cancer cells. Lewin B, et al. Anticancer Res, 2010 Jul. PMID 20682987.
Variation at the NFATC2 Locus Increases the Risk of Thiazolinedione-Induced Edema in the Diabetes REduction Assessment with ramipril and rosiglitazone Medication (DREAM) Study. Bailey SD, et al. Diabetes Care, 2010 Jul 13. PMID 20628086.
Association of mitotic regulation pathway polymorphisms with pancreatic cancer risk and outcome. Couch FJ, et al. Cancer Epidemiol Biomarkers Prev, 2010 Jan. PMID 20056645.
Polymorphisms in innate immunity genes and patients response to dendritic cell-based HIV immuno-treatment. Segat L, et al. Vaccine, 2010 Mar 2. PMID 20056178.
Roles of Fyn in pancreatic cancer metastasis. Chen ZY, et al. J Gastroenterol Hepatol, 2010 Feb. PMID 19968749.