

**Goat Anti-GRB2 Antibody**  
**Peptide-affinity purified goat antibody**  
**Catalog # AF1507a****Specification**

---

**Goat Anti-GRB2 Antibody - Product Information**

Application	IHC
Primary Accession	<a href="#">P62993</a>
Other Accession	<a href="#">NP_987102</a> , <a href="#">2885</a> , <a href="#">14784 (mouse)</a> , <a href="#">81504 (rat)</a>
Reactivity	Human, Mouse
Predicted	Rat, Dog, Cow
Host	Goat
Clonality	Polyclonal
Concentration	100ug/200ul
Isotype	IgG
Calculated MW	25206

**Goat Anti-GRB2 Antibody - Additional Information****Gene ID** 2885**Other Names**

Growth factor receptor-bound protein 2, Adapter protein GRB2, Protein Ash, SH2/SH3 adapter GRB2, GRB2, ASH

**Format**

0.5 mg IgG/ml in Tris saline (20mM Tris pH7.3, 150mM NaCl), 0.02% sodium azide, with 0.5% bovine serum albumin

**Storage**

Maintain refrigerated at 2-8°C for up to 6 months. For long term storage store at -20°C in small aliquots to prevent freeze-thaw cycles.

**Precautions**

Goat Anti-GRB2 Antibody is for research use only and not for use in diagnostic or therapeutic procedures.

**Goat Anti-GRB2 Antibody - Protein Information****Name** GRB2**Synonyms** ASH**Function**

Adapter protein that provides a critical link between cell surface growth factor receptors and the Ras signaling pathway.

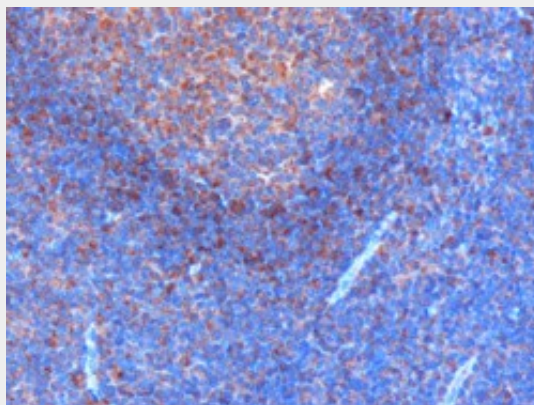
**Cellular Location**

Nucleus. Cytoplasm. Endosome Golgi apparatus {ECO:0000250|UniProtKB:Q60631}

**Goat Anti-GRB2 Antibody - Protocols**

Provided below are standard protocols that you may find useful for product applications.

- [Western Blot](#)
- [Blocking Peptides](#)
- [Dot Blot](#)
- [Immunohistochemistry](#)
- [Immunofluorescence](#)
- [Immunoprecipitation](#)
- [Flow Cytometry](#)
- [Cell Culture](#)

**Goat Anti-GRB2 Antibody - Images**

AF1507a (0.3 µg/ml) staining of paraffin embedded Human Tonsil. Microwaved antigen retrieval with citrate buffer pH6, HRP-staining.

**Goat Anti-GRB2 Antibody - Background**

The protein encoded by this gene binds the epidermal growth factor receptor and contains one SH2 domain and two SH3 domains. Its two SH3 domains direct complex formation with proline-rich regions of other proteins, and its SH2 domain binds tyrosine phosphorylated sequences. This gene is similar to the Sem5 gene of *C.elegans*, which is involved in the signal transduction pathway. Two alternatively spliced transcript variants encoding different isoforms have been found for this gene.

**Goat Anti-GRB2 Antibody - References**

Variation at the NFATC2 Locus Increases the Risk of Thiazolinedinedione-Induced Edema in the Diabetes REduction Assessment with ramipril and rosiglitazone Medication (DREAM) Study. Bailey SD, et al. *Diabetes Care*, 2010 Jul 13. PMID 20628086.

Association study of 182 candidate genes in anorexia nervosa. Pinheiro AP, et al. *Am J Med Genet B Neuropsychiatr Genet*, 2010 Jul. PMID 20468064.

Personalized smoking cessation: interactions between nicotine dose, dependence and quit-success genotype score. Rose JE, et al. *Mol Med*, 2010 Jul-Aug. PMID 20379614.

Preliminary crystallographic characterization of the Grb2 SH2 domain in complex with a FAK-derived phosphotyrosyl peptide. Chen HH, et al. *Acta Crystallogr Sect F Struct Biol Cryst Commun*, 2010 Feb 1. PMID 20124721.

Assembly of the Sos1-Grb2-Gab1 ternary signaling complex is under allosteric control. McDonald CB, et al. Arch Biochem Biophys, 2010 Feb 15. PMID 20005866.