

**Goat Anti-GULP1 / CED6 Antibody**  
**Peptide-affinity purified goat antibody**  
**Catalog # AF1516a****Specification**

---

**Goat Anti-GULP1 / CED6 Antibody - Product Information**

Application	WB, IHC
Primary Accession	<a href="#">Q9UBP9</a>
Other Accession	<a href="#">NP_057399</a> , <a href="#">51454</a> , <a href="#">70676 (mouse)</a>
Reactivity	Human
Predicted	Mouse, Rat, Dog
Host	Goat
Clonality	Polyclonal
Concentration	100ug/200ul
Isotype	IgG
Calculated MW	34490

**Goat Anti-GULP1 / CED6 Antibody - Additional Information****Gene ID** 51454**Other Names**

PTB domain-containing engulfment adapter protein 1, Cell death protein 6 homolog, PTB domain adapter protein CED-6, Protein GULP, GULP1, CED6, GULP

**Format**

0.5 mg IgG/ml in Tris saline (20mM Tris pH7.3, 150mM NaCl), 0.02% sodium azide, with 0.5% bovine serum albumin

**Storage**

Maintain refrigerated at 2-8°C for up to 6 months. For long term storage store at -20°C in small aliquots to prevent freeze-thaw cycles.

**Precautions**

Goat Anti-GULP1 / CED6 Antibody is for research use only and not for use in diagnostic or therapeutic procedures.

**Goat Anti-GULP1 / CED6 Antibody - Protein Information****Name** GULP1**Synonyms** CED6, GULP**Function**

May function as an adapter protein. Required for efficient phagocytosis of apoptotic cells. Modulates cellular glycosphingolipid and cholesterol transport. May play a role in the internalization and endosomal trafficking of various LRP1 ligands, such as PSAP. Increases cellular

levels of GTP-bound ARF6.

#### Cellular Location

Cytoplasm. Note=May associate with the cytoplasmic side of the plasma membrane and early endosomes

#### Tissue Location

Widely expressed. Detected in macrophages, pancreas, kidney, skeletal muscle, heart, colon, intestine, lung, placenta and ovary.

### Goat Anti-GULP1 / CED6 Antibody - Protocols

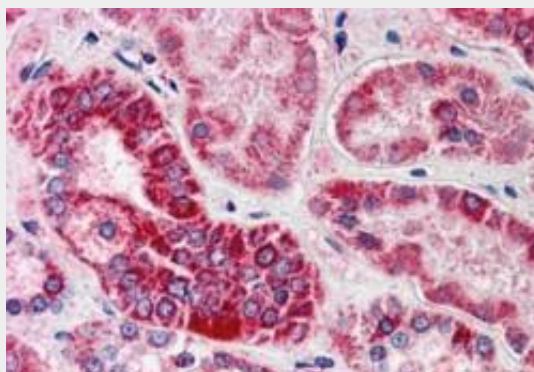
Provided below are standard protocols that you may find useful for product applications.

- [Western Blot](#)
- [Blocking Peptides](#)
- [Dot Blot](#)
- [Immunohistochemistry](#)
- [Immunofluorescence](#)
- [Immunoprecipitation](#)
- [Flow Cytometry](#)
- [Cell Culture](#)

### Goat Anti-GULP1 / CED6 Antibody - Images



AF1516a staining (0.2 µg/ml) of Human Placenta lysate (RIPA buffer, 30 µg total protein per lane). Primary incubated for 1 hour. Detected by western blot using chemiluminescence.



AF1516a (5 µg/ml) staining of paraffin embedded Human Kidney. Steamed antigen retrieval with

citrate buffer pH 6, AP-staining.

### **Goat Anti-GULP1 / CED6 Antibody - Background**

The prompt clearance of cells undergoing apoptosis is critical during embryonic development, normal tissue turnover, inflammation, and autoimmunity. CED6 is an evolutionarily conserved adaptor protein required for efficient engulfment of apoptotic cells by phagocytes.

### **Goat Anti-GULP1 / CED6 Antibody - References**

Adaptor protein GULP is involved in stabilin-1-mediated phagocytosis. Park SY, et al. Biochem Biophys Res Commun, 2010 Jul 30. PMID 20599701.

New genetic associations detected in a host response study to hepatitis B vaccine. Davila S, et al. Genes Immun, 2010 Apr. PMID 20237496.

Apoptotic engulfment pathway and schizophrenia. Chen X, et al. PLoS One, 2009 Sep 1. PMID 19721717.

Signalling pathway involving GULP, MAPK and Rac1 for SR-BI-induced phagocytosis of apoptotic cells. Osada Y, et al. J Biochem, 2009 Mar. PMID 19122200.

Requirement of adaptor protein GULP during stabilin-2-mediated cell corpse engulfment. Park SY, et al. J Biol Chem, 2008 Apr 18. PMID 18230608.