

**Goat Anti-IRF6 Antibody**  
**Peptide-affinity purified goat antibody**  
**Catalog # AF1572a****Specification**

---

**Goat Anti-IRF6 Antibody - Product Information**

Application	IHC, WB
Primary Accession	<a href="#">O14896</a>
Other Accession	<a href="#">NP_006138</a> , <a href="#">3664</a> , <a href="#">54139 (mouse)</a>
Reactivity	Human
Predicted	Mouse
Host	Goat
Clonality	Polyclonal
Concentration	0.5 mg/ml
Isotype	IgG
Calculated MW	53130

**Goat Anti-IRF6 Antibody - Additional Information****Gene ID** 3664**Other Names**

Interferon regulatory factor 6, IRF-6, IRF6

**Format**

0.5 mg IgG/ml in Tris saline (20mM Tris pH7.3, 150mM NaCl), 0.02% sodium azide, with 0.5% bovine serum albumin

**Storage**

Maintain refrigerated at 2-8°C for up to 6 months. For long term storage store at -20°C in small aliquots to prevent freeze-thaw cycles.

**Precautions**

Goat Anti-IRF6 Antibody is for research use only and not for use in diagnostic or therapeutic procedures.

**Goat Anti-IRF6 Antibody - Protein Information****Name** IRF6**Function**

Probable DNA-binding transcriptional activator. Key determinant of the keratinocyte proliferation-differentiation switch involved in appropriate epidermal development (By similarity). Plays a role in regulating mammary epithelial cell proliferation (By similarity). May regulate WDR65 transcription (By similarity).

**Cellular Location**

Nucleus. Cytoplasm Note=Translocates to nucleus in response to an activating signal

#### Tissue Location

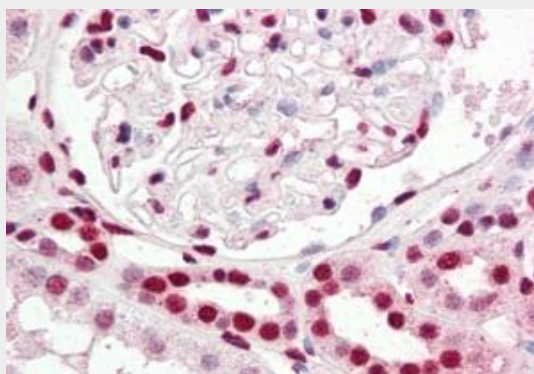
Expressed in normal mammary epithelial cells. Expression is reduced or absent in breast carcinomas

#### Goat Anti-IRF6 Antibody - Protocols

Provided below are standard protocols that you may find useful for product applications.

- [Western Blot](#)
- [Blocking Peptides](#)
- [Dot Blot](#)
- [Immunohistochemistry](#)
- [Immunofluorescence](#)
- [Immunoprecipitation](#)
- [Flow Cytometry](#)
- [Cell Culture](#)

#### Goat Anti-IRF6 Antibody - Images

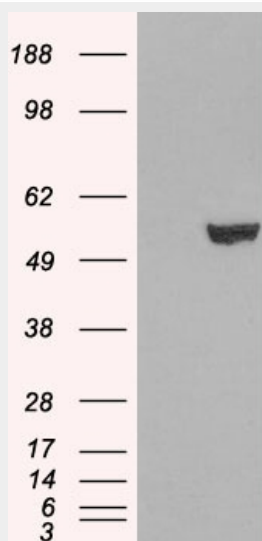


AF1572a (2.5 µg/ml) staining of paraffin embedded Human Kidney. Steamed antigen retrieval with citrate buffer pH 6, AP-staining.



AF1572a staining (0.2 µg/ml) of Human Ovary lysate (RIPA buffer, 35 µg total protein per lane).

Primary incubated for 1 hour. Detected by western blot using chemiluminescence.



HEK293 overexpressing IRF6 (RC201579) and probed with AF1572a (mock transfection in first lane), tested by Origene.

#### **Goat Anti-IRF6 Antibody - Background**

This gene encodes a member of the interferon regulatory transcription factor (IRF) family. Family members share a highly-conserved N-terminal helix-turn-helix DNA-binding domain and a less conserved C-terminal protein-binding domain. Mutations in this gene can cause van der Woude syndrome and popliteal pterygium syndrome. This protein is involved in palate formation.

#### **Goat Anti-IRF6 Antibody - References**

IRF6 polymorphisms are associated with nonsyndromic orofacial clefts in a Chinese Han population. Pan Y, et al. Am J Med Genet A, 2010 Aug 26. PMID 20799332.

Genetic variants in COL2A1, COL11A2, and IRF6 contribute risk to nonsyndromic cleft palate. Nikopensius T, et al. Birth Defects Res A Clin Mol Teratol, 2010 Jul 29. PMID 20672350.

Evidence of gene-environment interaction for the IRF6 gene and maternal multivitamin supplementation in controlling the risk of cleft lip with/without cleft palate. Wu T, et al. Hum Genet, 2010 Oct. PMID 20652317.

Maternal genes and facial clefts in offspring: a comprehensive search for genetic associations in two population-based cleft studies from Scandinavia. Jugessur A, et al. PLoS One, 2010 Jul 9. PMID 20634891.

MTHFR and MSX1 contribute to the risk of nonsyndromic cleft lip/palate. Jagomagi T, et al. Eur J Oral Sci, 2010 Jun. PMID 20572854.