

**Goat Anti-LNK / SH2B3 Antibody**  
**Peptide-affinity purified goat antibody**  
**Catalog # AF1633a****Specification**

---

**Goat Anti-LNK / SH2B3 Antibody - Product Information**

Application	WB
Primary Accession	<a href="#">O9UQQ2</a>
Other Accession	<a href="#">NP_005466</a> , <a href="#">10019</a>
Reactivity	Human
Host	Goat
Clonality	Polyclonal
Concentration	100ug/200ul
Isotype	IgG
Calculated MW	63225

**Goat Anti-LNK / SH2B3 Antibody - Additional Information****Gene ID** 10019**Other Names**

SH2B adapter protein 3, Lymphocyte adapter protein, Lymphocyte-specific adapter protein Lnk, Signal transduction protein Lnk, SH2B3, LNK

**Format**

0.5 mg IgG/ml in Tris saline (20mM Tris pH7.3, 150mM NaCl), 0.02% sodium azide, with 0.5% bovine serum albumin

**Storage**

Maintain refrigerated at 2-8°C for up to 6 months. For long term storage store at -20°C in small aliquots to prevent freeze-thaw cycles.

**Precautions**

Goat Anti-LNK / SH2B3 Antibody is for research use only and not for use in diagnostic or therapeutic procedures.

**Goat Anti-LNK / SH2B3 Antibody - Protein Information****Name** SH2B3**Synonyms** LNK**Function**

Links T-cell receptor activation signal to phospholipase C- gamma-1, GRB2 and phosphatidylinositol 3-kinase.

**Tissue Location**

Preferentially expressed by lymphoid cell lines.

### Goat Anti-LNK / SH2B3 Antibody - Protocols

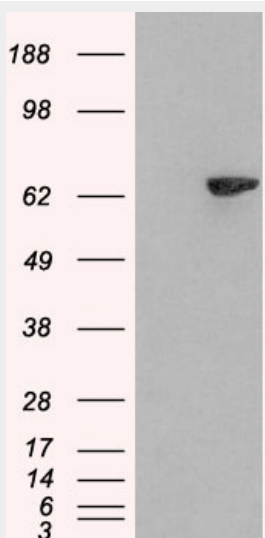
Provided below are standard protocols that you may find useful for product applications.

- [Western Blot](#)
- [Blocking Peptides](#)
- [Dot Blot](#)
- [Immunohistochemistry](#)
- [Immunofluorescence](#)
- [Immunoprecipitation](#)
- [Flow Cytometry](#)
- [Cell Culture](#)

### Goat Anti-LNK / SH2B3 Antibody - Images



AF1633a (0.3 µg/ml) staining of MOLT4 lysate (35 µg protein in RIPA buffer). Primary incubation was 1 hour. Detected by chemiluminescence.



HEK293 overexpressing SH2B3 (RC218359) and probed with AF1633a (mock transfection in first lane), tested by Origene.

### Goat Anti-LNK / SH2B3 Antibody - Background

This gene encodes a member of the SH2B adaptor family of proteins, which are involved in a range of signaling activities by growth factor and cytokine receptors. The encoded protein is a key negative regulator of cytokine signaling and plays a critical role in hematopoiesis. Mutations in this gene have been associated with susceptibility to celiac disease type 13 and susceptibility to insulin-dependent diabetes mellitus.

#### **Goat Anti-LNK / SH2B3 Antibody - References**

Investigation of type 1 diabetes and coeliac disease susceptibility loci for association with juvenile idiopathic arthritis. Hinks A, et al. *Ann Rheum Dis*, 2010 Jul 20. PMID 20647273.  
[Association of the polymorphisms of the ERBB3 and SH2B3 genes with type 1 diabetes] Nikitin AG, et al. *Mol Biol (Mosk)*, 2010 Mar-Apr. PMID 20586186.  
Evolutionary and functional analysis of celiac risk loci reveals SH2B3 as a protective factor against bacterial infection. Zhernakova A, et al. *Am J Hum Genet*, 2010 Jun 11. PMID 20560212.  
The carriage of the type 1 diabetes-associated R262W variant of human LNK correlates with increased proliferation of peripheral blood monocytes in diabetic patients. Lavrikova EY, et al. *Pediatr Diabetes*, 2010 Jun 7. PMID 20546165.  
The autoimmune disease-associated KIF5A, CD226 and SH2B3 gene variants confer susceptibility for multiple sclerosis. Alcina A, et al. *Genes Immun*, 2010 Jul. PMID 20508602.