

Goat Anti-MAN2A1 Antibody
Peptide-affinity purified goat antibody
Catalog # AF1649a**Specification**

Goat Anti-MAN2A1 Antibody - Product Information

| | |
|-------------------|--|
| Application | WB |
| Primary Accession | Q16706 |
| Other Accession | NP_002363 , 4124 |
| Reactivity | Human |
| Host | Goat |
| Clonality | Polyclonal |
| Concentration | 100ug/200ul |
| Isotype | IgG |
| Calculated MW | 131141 |

Goat Anti-MAN2A1 Antibody - Additional Information**Gene ID** 4124**Other Names**

Alpha-mannosidase 2, 3.2.1.114, Golgi alpha-mannosidase II, AMan II, Man II, Mannosidase alpha class 2A member 1, Mannosyl-oligosaccharide 1, 3-1, 6-alpha-mannosidase, MAN2A1, MANA2

Format

0.5 mg IgG/ml in Tris saline (20mM Tris pH7.3, 150mM NaCl), 0.02% sodium azide, with 0.5% bovine serum albumin

Storage

Maintain refrigerated at 2-8°C for up to 6 months. For long term storage store at -20°C in small aliquots to prevent freeze-thaw cycles.

Precautions

Goat Anti-MAN2A1 Antibody is for research use only and not for use in diagnostic or therapeutic procedures.

Goat Anti-MAN2A1 Antibody - Protein Information**Name** MAN2A1**Synonyms** MANA2**Function**

Catalyzes the first committed step in the biosynthesis of complex N-glycans. It controls conversion of high mannose to complex N- glycans; the final hydrolytic step in the N-glycan maturation pathway.

Cellular Location

Golgi apparatus membrane {ECO:0000250|UniProtKB:P28494}; Single-pass type II membrane protein {ECO:0000250|UniProtKB:P28494}

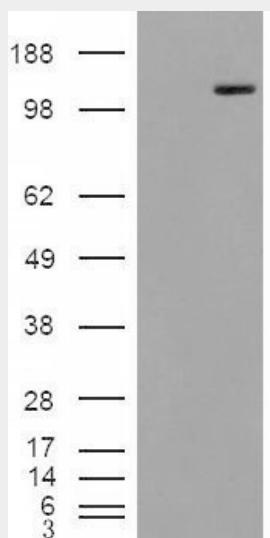
Goat Anti-MAN2A1 Antibody - Protocols

Provided below are standard protocols that you may find useful for product applications.

- [Western Blot](#)
- [Blocking Peptides](#)
- [Dot Blot](#)
- [Immunohistochemistry](#)
- [Immunofluorescence](#)
- [Immunoprecipitation](#)
- [Flow Cytometry](#)
- [Cell Culture](#)

Goat Anti-MAN2A1 Antibody - Images

AF1649a (0.3 µg/ml) staining of Human Placenta lysate (35 µg protein in RIPA buffer). Primary incubation was 1 hour. Detected by chemiluminescence.



HEK293 overexpressing Man2A1 (RC220186) and probed with AF1649a (mock transfection in first lane), tested by Origene.

Goat Anti-MAN2A1 Antibody - Background

This gene encodes a protein which is a member of family 38 of the glycosyl hydrolases. The protein is located in the Golgi and catalyzes the final hydrolytic step in the asparagine-linked oligosaccharide (N-glycan) maturation pathway. Mutations in the mouse homolog of this gene have been shown to cause a systemic autoimmune disease similar to human systemic lupus erythematosus.

Goat Anti-MAN2A1 Antibody - References

Variants in KCNQ1, AP3S1, MAN2A1, and ALDH7A1 and the risk of type 2 diabetes in the Chinese Northern Han population: a case-control study and meta-analysis. Zhou JB, et al. Med Sci Monit, 2010 Jun. PMID 20512086.

Personalized smoking cessation: interactions between nicotine dose, dependence and quit-success genotype score. Rose JE, et al. Mol Med, 2010 Jul-Aug. PMID 20379614.

Genome-wide association study of childhood acute lymphoblastic leukemia in Korea. Han S, et al. Leuk Res, 2010 Oct. PMID 20189245.

Association of polymorphisms in complement component C3 gene with susceptibility to systemic lupus erythematosus. Miyagawa H, et al. Rheumatology (Oxford), 2008 Feb. PMID 18174230.

Genome-wide association and linkage analyses of hemostatic factors and hematological phenotypes in the Framingham Heart Study. Yang Q, et al. BMC Med Genet, 2007 Sep 19. PMID 17903294.