

**Goat Anti-Melanophilin (mouse) Antibody**  
**Peptide-affinity purified goat antibody**  
**Catalog # AF1667a****Specification**

---

**Goat Anti-Melanophilin (mouse) Antibody - Product Information**

Application	WB, IF
Primary Accession	<a href="#">O91V27.1</a>
Other Accession	<a href="#">NP_443748</a> , <a href="#">171531 (mouse)</a> , <a href="#">316620 (rat)</a>
Reactivity	Mouse
Predicted	Rat
Host	Goat
Clonality	Polyclonal
Concentration	100ug/200ul
Isotype	IgG

**Goat Anti-Melanophilin (mouse) Antibody - Additional Information****Other Names**

2210418F23Rik antibody, melanophilin antibody, Mlph antibody, In antibody, l1Rk3 antibody, Slac-2a antibody, D1Wsu84e antibody, l(1)-3Rk antibody, 5031433I09Rik antibody, leaden antibody, AW228792 antibody, OTTMUSP00000025451 antibody

**Format**

0.5 mg IgG/ml in Tris saline (20mM Tris pH7.3, 150mM NaCl), 0.02% sodium azide, with 0.5% bovine serum albumin

**Storage**

Maintain refrigerated at 2-8°C for up to 6 months. For long term storage store at -20°C in small aliquots to prevent freeze-thaw cycles.

**Precautions**

Goat Anti-Melanophilin (mouse) Antibody is for research use only and not for use in diagnostic or therapeutic procedures.

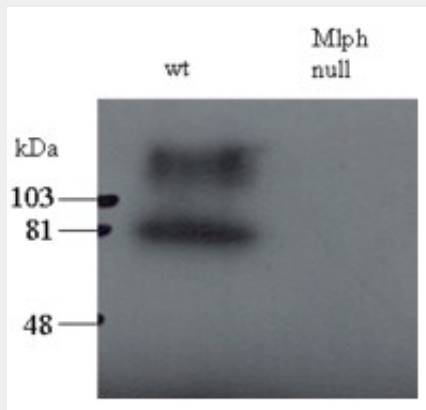
**Goat Anti-Melanophilin (mouse) Antibody - Protein Information****Goat Anti-Melanophilin (mouse) Antibody - Protocols**

Provided below are standard protocols that you may find useful for product applications.

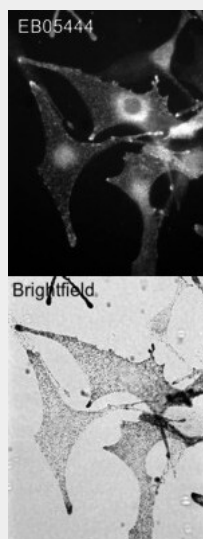
- [Western Blot](#)
- [Blocking Peptides](#)
- [Dot Blot](#)
- [Immunohistochemistry](#)
- [Immunofluorescence](#)

- [Immunoprecipitation](#)
- [Flow Cytometry](#)
- [Cell Culture](#)

### Goat Anti-Melanophilin (mouse) Antibody - Images



EB05444 staining (0.5ug/ml) of total melanocyte PNS (200ug per lane) of wild-type and melanophilin null (Mlph null) mice. The upper band may represent the stacking-separating gel interface. Data kindly provided by A N Hume, Imperial College.



Wild-type C57bl6 derived melanocytes were stained with EB05444 (0.5ug/ml) and detected with Alexa568 conjugated donkey anti-sheep second antibodies. Brightfield image shows melanosome distribution. Data kindly provided by A N Hume, Imperial College.

### Goat Anti-Melanophilin (mouse) Antibody - References

Structural basis for the exclusive specificity of Slac2-a/melanophilin for the Rab27 GTPases. Kukimoto-Niino M, et al. Structure, 2008 Oct 8. PMID 18940604.  
Iris phenotypes and pigment dispersion caused by genes influencing pigmentation. Anderson MG, et al. Pigment Cell Melanoma Res, 2008 Oct. PMID 18715234.  
Dietary thyroid hormone replacement ameliorates hearing deficits in hypothyroid mice. Karolyi IJ, et al. Mamm Genome, 2007 Aug. PMID 17899304.  
Rab27a and MyoVa are the primary Mlph interactors regulating melanosome transport in melanocytes. Hume AN, et al. J Cell Sci, 2007 Sep 1. PMID 17698919.  
Melanophilin, a novel aldosterone-induced gene in mouse cortical collecting duct cells. Martel JA, et al. Am J Physiol Renal Physiol, 2007 Sep. PMID 17609287.