

**Goat Anti-MEPI / SERPINI2 Antibody**  
**Peptide-affinity purified goat antibody**  
**Catalog # AF1670a****Specification**

---

**Goat Anti-MEPI / SERPINI2 Antibody - Product Information**

Application	WB, IHC
Primary Accession	<a href="#">O75830</a>
Other Accession	<a href="#">NP_001012303</a> , <a href="#">5276</a> , <a href="#">67931 (mouse)</a> , <a href="#">171149 (rat)</a>
Reactivity	Human
Predicted	Mouse, Rat, Dog
Host	Goat
Clonality	Polyclonal
Concentration	100ug/200ul
Isotype	IgG
Calculated MW	46145

**Goat Anti-MEPI / SERPINI2 Antibody - Additional Information****Gene ID** 5276**Other Names**

Serpin I2, Myoepithelium-derived serine protease inhibitor, Pancpin, Pancreas-specific protein TSA2004, Peptidase inhibitor 14, PI-14, SERPINI2, MEPI, PI14

**Format**

0.5 mg IgG/ml in Tris saline (20mM Tris pH7.3, 150mM NaCl), 0.02% sodium azide, with 0.5% bovine serum albumin

**Storage**

Maintain refrigerated at 2-8°C for up to 6 months. For long term storage store at -20°C in small aliquots to prevent freeze-thaw cycles.

**Precautions**

Goat Anti-MEPI / SERPINI2 Antibody is for research use only and not for use in diagnostic or therapeutic procedures.

**Goat Anti-MEPI / SERPINI2 Antibody - Protein Information****Name** SERPINI2**Synonyms** MEPI, PI14**Cellular Location**

Secreted.

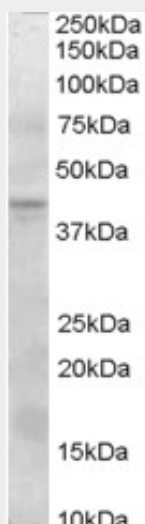
**Tissue Location**

Expressed in pancreas and adipose tissues.

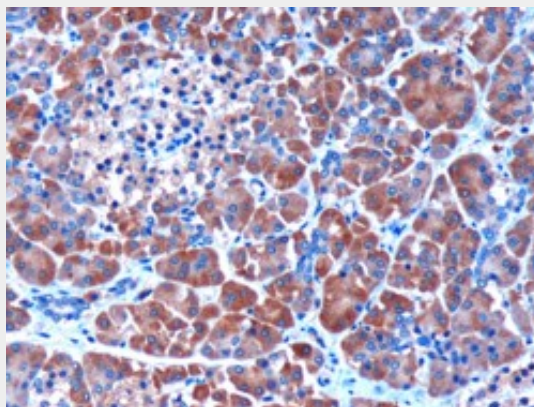
**Goat Anti-MEPI / SERPINI2 Antibody - Protocols**

Provided below are standard protocols that you may find useful for product applications.

- [Western Blot](#)
- [Blocking Peptides](#)
- [Dot Blot](#)
- [Immunohistochemistry](#)
- [Immunofluorescence](#)
- [Immunoprecipitation](#)
- [Flow Cytometry](#)
- [Cell Culture](#)

**Goat Anti-MEPI / SERPINI2 Antibody - Images**

AF1670a (0.3 µg/ml) staining of Human Pancreas lysate (35 µg protein in RIPA buffer). Primary incubation was 1 hour. Detected by chemiluminescence.



AF1670a (3 µg/ml) staining of paraffin embedded Human Pancreas. Microwaved antigen retrieval with citrate buffer pH 6, HRP-staining

**Goat Anti-MEPI / SERPINI2 Antibody - Background**

The protein encoded by this gene is a member of the serine protease inhibitor (serpin) superfamily made up of proteins which play central roles in the regulation of a wide variety of physiological processes, including coagulation, fibrinolysis, development, malignancy and inflammation. The gene product may have a role in a growth-control, possibly growth-suppressing pathway and, when impaired, may be involved in pancreatic carcinogenesis. The protein is a member of the plasminogen activator inhibitor-1 family, a subset of the serpin superfamily whose members act as tissue-specific tPA inhibitors. Two alternatively spliced transcript variants encoding distinct protein isoforms have been found for this gene.

#### **Goat Anti-MEPI / SERPINI2 Antibody - References**

A Large-scale genetic association study of esophageal adenocarcinoma risk. Liu CY, et al. Carcinogenesis, 2010 Jul. PMID 20453000.

A protein-protein interaction network for human inherited ataxias and disorders of Purkinje cell degeneration. Lim J, et al. Cell, 2006 May 19. PMID 16713569.

Towards a proteome-scale map of the human protein-protein interaction network. Rual JF, et al. Nature, 2005 Oct 20. PMID 16189514.

The status, quality, and expansion of the NIH full-length cDNA project: the Mammalian Gene Collection (MGC). Gerhard DS, et al. Genome Res, 2004 Oct. PMID 15489334.

Generation and initial analysis of more than 15,000 full-length human and mouse cDNA sequences. Strausberg RL, et al. Proc Natl Acad Sci U S A, 2002 Dec 24. PMID 12477932.