

**Goat Anti-NHERF2 (isoform a) Antibody**  
**Peptide-affinity purified goat antibody**  
**Catalog # AF1731a****Specification**

---

**Goat Anti-NHERF2 (isoform a) Antibody - Product Information**

Application	IHC, WB
Primary Accession	<a href="#">Q15599</a>
Other Accession	<a href="#">NP_001123484</a> , <a href="#">9351</a>
Reactivity	Human
Host	Goat
Clonality	Polyclonal
Concentration	100ug/200ul
Isotype	IgG
Calculated MW	37414

**Goat Anti-NHERF2 (isoform a) Antibody - Additional Information****Gene ID** 9351**Other Names**

Na(+)/H(+) exchange regulatory cofactor NHE-RF2, NHERF-2, NHE3 kinase A regulatory protein E3KARP, SRY-interacting protein 1, SIP-1, Sodium-hydrogen exchanger regulatory factor 2, Solute carrier family 9 isoform A3 regulatory factor 2, Tyrosine kinase activator protein 1, TKA-1, SLC9A3R2, NHERF2

**Format**

0.5 mg IgG/ml in Tris saline (20mM Tris pH7.3, 150mM NaCl), 0.02% sodium azide, with 0.5% bovine serum albumin

**Storage**

Maintain refrigerated at 2-8°C for up to 6 months. For long term storage store at -20°C in small aliquots to prevent freeze-thaw cycles.

**Precautions**

Goat Anti-NHERF2 (isoform a) Antibody is for research use only and not for use in diagnostic or therapeutic procedures.

**Goat Anti-NHERF2 (isoform a) Antibody - Protein Information****Name** NHERF2 ([HGNC:11076](#))**Synonyms** SLC9A3R2**Function**

Scaffold protein that connects plasma membrane proteins with members of the ezrin/moesin/radixin family and thereby helps to link them to the actin cytoskeleton and to

regulate their surface expression. Necessary for cAMP-mediated phosphorylation and inhibition of SLC9A3 (PubMed:<a href="http://www.uniprot.org/citations/18829453" target="\_blank">18829453</a>). May also act as scaffold protein in the nucleus.

**Cellular Location**

Endomembrane system; Peripheral membrane protein. Nucleus. Apical cell membrane  
Note=Localizes with EZR and PODXL at the apical cell membrane of glomerular epithelium cells and the sides of the foot processes (By similarity). Nuclear, in a punctate pattern.

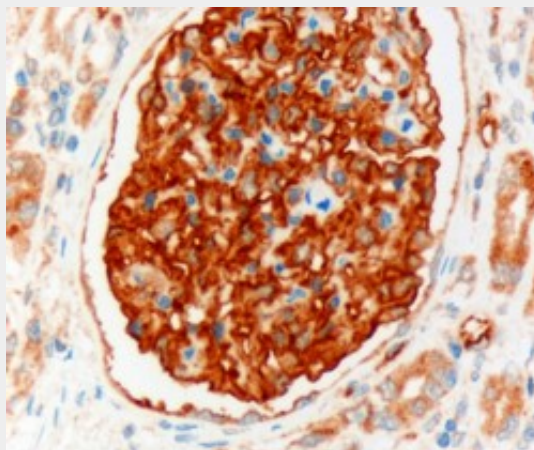
**Tissue Location**

Widely expressed.

**Goat Anti-NHERF2 (isoform a) Antibody - Protocols**

Provided below are standard protocols that you may find useful for product applications.

- [Western Blot](#)
- [Blocking Peptides](#)
- [Dot Blot](#)
- [Immunohistochemistry](#)
- [Immunofluorescence](#)
- [Immunoprecipitation](#)
- [Flow Cytometry](#)
- [Cell Culture](#)

**Goat Anti-NHERF2 (isoform a) Antibody - Images**

AF1731a (3 µg/ml) staining of paraffin embedded Human Kidney. Microwaved antigen retrieval with Tris/EDTA buffer pH9, HRP-staining.



AF1731a (0.3 µg/ml) staining of human kidney lysate (35 µg protein in RIPA buffer). Primary incubation was 1 hour. Detected by chemiluminescence.

#### **Goat Anti-NHERF2 (isoform a) Antibody - Background**

NHE3 (SLC9A3; MIM 182307) is a sodium/hydrogen exchanger in the brush border membrane of the proximal tubule, small intestine, and colon that plays a major role in transepithelial sodium absorption. SLC9A3R2, as well as SLC9A3R1 (MIM 604990) and protein kinase A phosphorylation, may play a role in NHE3 regulation.

#### **Goat Anti-NHERF2 (isoform a) Antibody - References**

Na/H exchanger regulatory factors control parathyroid hormone receptor signaling by facilitating differential activation of G(alpha) protein subunits. Wang B, et al. J Biol Chem, 2010 Aug 27. PMID 20562104.

Defining the human deubiquitinating enzyme interaction landscape. Sowa ME, et al. Cell, 2009 Jul 23. PMID 19615732.

MCC, a new interacting protein for Scrib, is required for cell migration in epithelial cells. Arnaud C, et al. FEBS Lett, 2009 Jul 21. PMID 19555689.

Lysophosphatidic acid 2 receptor-mediated supramolecular complex formation regulates its antiapoptotic effect. E S, et al. J Biol Chem, 2009 May 22. PMID 19293149.

Regulation of protein expression and function of octn2 in forskolin-induced syncytialization in BeWo Cells. Huang FD, et al. Placenta, 2009 Feb. PMID 19091402.