

**Goat Anti-NIPP1 / PPP1R8 Antibody**  
**Peptide-affinity purified goat antibody**  
**Catalog # AF1732a****Specification**

---

**Goat Anti-NIPP1 / PPP1R8 Antibody - Product Information**

Application	WB, IHC
Primary Accession	<a href="#">Q12972</a>
Other Accession	<a href="#">NP_612568</a> , <a href="#">5511</a> , <a href="#">100336 (mouse)</a>
Reactivity	Human
Predicted	Mouse, Rat, Dog, Cow
Host	Goat
Clonality	Polyclonal
Concentration	100ug/200ul
Isotype	IgG
Calculated MW	38479

**Goat Anti-NIPP1 / PPP1R8 Antibody - Additional Information****Gene ID** 5511**Other Names**

Nuclear inhibitor of protein phosphatase 1, NIPP-1, Protein phosphatase 1 regulatory inhibitor subunit 8, Activator of RNA decay, 3.1.4.-, ARD-1, PPP1R8, ARD1, NIPP1

**Format**

0.5 mg IgG/ml in Tris saline (20mM Tris pH7.3, 150mM NaCl), 0.02% sodium azide, with 0.5% bovine serum albumin

**Storage**

Maintain refrigerated at 2-8°C for up to 6 months. For long term storage store at -20°C in small aliquots to prevent freeze-thaw cycles.

**Precautions**

Goat Anti-NIPP1 / PPP1R8 Antibody is for research use only and not for use in diagnostic or therapeutic procedures.

**Goat Anti-NIPP1 / PPP1R8 Antibody - Protein Information****Name** PPP1R8**Synonyms** ARD1, NIPP1**Function**

Inhibitor subunit of the major nuclear protein phosphatase-1 (PP-1). It has RNA-binding activity but does not cleave RNA and may target PP-1 to RNA-associated substrates. May also be involved in pre- mRNA splicing. Binds DNA and might act as a transcriptional repressor. Seems to be required

for cell proliferation.

#### Cellular Location

Nucleus. Nucleus speckle. Note=Primarily, but not exclusively, nuclear

#### Tissue Location

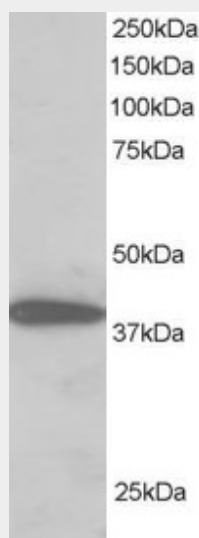
Ubiquitously expressed, with highest levels in heart and skeletal muscle, followed by brain, placenta, lung, liver and pancreas. Less abundant in kidney. The concentration and ratio between isoforms is cell-type dependent. Isoform Alpha (>90%) and isoform Beta were found in brain, heart and kidney. Isoform Gamma is mainly found in B-cells and T-lymphocytes, and has been found in 293 embryonic kidney cells.

#### Goat Anti-NIPP1 / PPP1R8 Antibody - Protocols

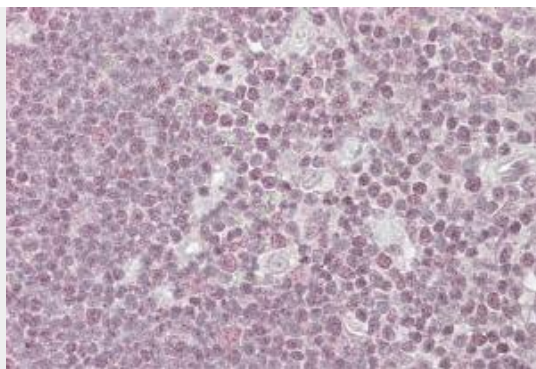
Provided below are standard protocols that you may find useful for product applications.

- [Western Blot](#)
- [Blocking Peptides](#)
- [Dot Blot](#)
- [Immunohistochemistry](#)
- [Immunofluorescence](#)
- [Immunoprecipitation](#)
- [Flow Cytometry](#)
- [Cell Culture](#)

#### Goat Anti-NIPP1 / PPP1R8 Antibody - Images



AF1732a staining (2 µg/ml) of H460 lysate (RIPA buffer, 30 µg total protein per lane). Primary incubated for 1 hour. Detected by western blot using chemiluminescence.



AF1732a (3.8 µg/ml) staining of paraffin embedded Human Thymus. Steamed antigen retrieval with citrate buffer pH 6, AP-staining.