

Goat Anti-Pancreatic Polypeptide / PPY Antibody
Peptide-affinity purified goat antibody
Catalog # AF1784a**Specification**

Goat Anti-Pancreatic Polypeptide / PPY Antibody - Product Information

Application	IHC
Primary Accession	P01298
Other Accession	NP_002713 , 5539
Reactivity	Human, Mouse
Predicted	Rat, Dog
Host	Goat
Clonality	Polyclonal
Concentration	100ug/200ul
Isotype	IgG
Calculated MW	10445

Goat Anti-Pancreatic Polypeptide / PPY Antibody - Additional Information**Gene ID** 5539**Other Names**

Pancreatic prohormone, Pancreatic polypeptide, PP, Obinepitide, Pancreatic hormone, PH, Pancreatic icosapeptide, PI, PPY, PNP

Format

0.5 mg IgG/ml in Tris saline (20mM Tris pH7.3, 150mM NaCl), 0.02% sodium azide, with 0.5% bovine serum albumin

Storage

Maintain refrigerated at 2-8°C for up to 6 months. For long term storage store at -20°C in small aliquots to prevent freeze-thaw cycles.

Precautions

Goat Anti-Pancreatic Polypeptide / PPY Antibody is for research use only and not for use in diagnostic or therapeutic procedures.

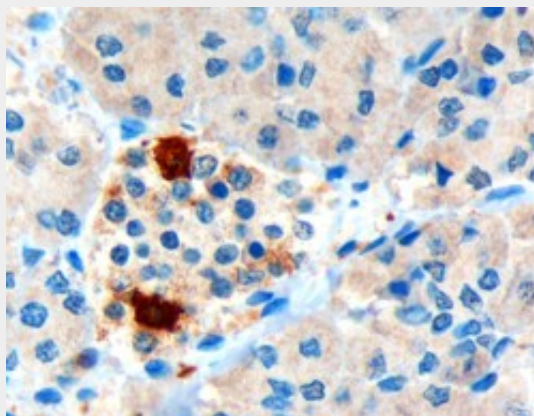
Goat Anti-Pancreatic Polypeptide / PPY Antibody - Protein Information**Name** PPY ([HGNC:9327](#))**Synonyms** PNP**Function**

[Pancreatic polypeptide]: Hormone secreted by pancreatic cells that acts as a regulator of pancreatic and gastrointestinal functions probably by signaling through the G protein-coupled receptor NPY4R2.

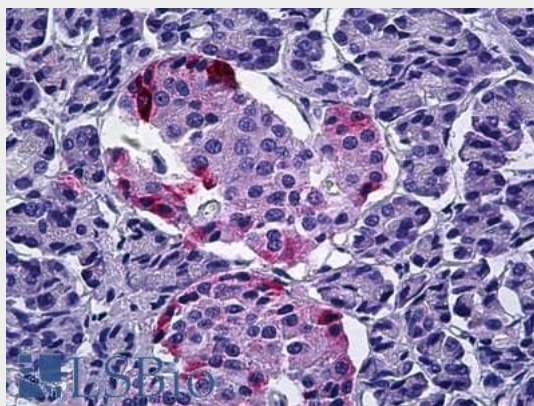
Cellular Location
Secreted**Goat Anti-Pancreatic Polypeptide / PPY Antibody - Protocols**

Provided below are standard protocols that you may find useful for product applications.

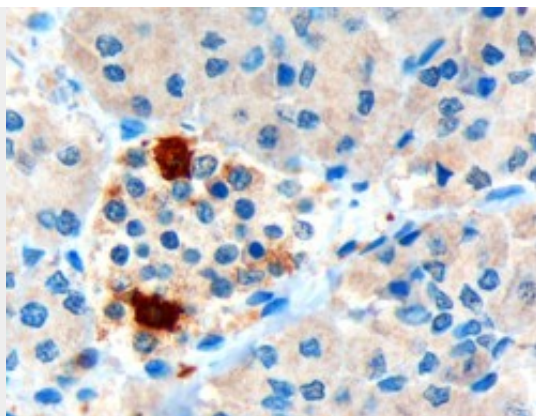
- [Western Blot](#)
- [Blocking Peptides](#)
- [Dot Blot](#)
- [Immunohistochemistry](#)
- [Immunofluorescence](#)
- [Immunoprecipitation](#)
- [Flow Cytometry](#)
- [Cell Culture](#)

Goat Anti-Pancreatic Polypeptide / PPY Antibody - Images

AF1784a (3 µg/ml) staining of paraffin embedded Human Pancreas. Microwaved antigen retrieval with Tris/EDTA buffer Ph9, HRP-staining.



AF1784a (5 µg/ml) staining of paraffin embedded Human Pancreas. Steamed antigen retrieval with citrate buffer pH 6, AP-staining.



AF1784a (5 µg/ml) staining of paraffin embedded Human Intestine. Steamed antigen retrieval with citrate buffer pH 6, AP-staining.

Goat Anti-Pancreatic Polypeptide / PPY Antibody - Background

This gene belongs to the NPY family and it encodes a protein that is synthesized as a 95 aa polypeptide precursor in the pancreatic islets of Langerhans. It is cleaved into two peptide products; the active hormone of 36 aa and an icosapeptide of unknown function. The hormone acts as a regulator of pancreatic and gastrointestinal functions and may be important in the regulation of food intake. Plasma level of this hormone has been shown to be reduced in conditions associated with increased food intake and elevated in anorexia nervosa. In addition, infusion of this hormone in obese rodents has shown to decrease weight gain.

Goat Anti-Pancreatic Polypeptide / PPY Antibody - References

Association studies of BMI and type 2 diabetes in the neuropeptide Y pathway: a possible role for NPY2R as a candidate gene for type 2 diabetes in men. Campbell CD, et al. Diabetes, 2007 May. PMID 17325259.

Single nucleotide polymorphisms in the neuropeptide Y2 receptor (NPY2R) gene and association with severe obesity in French white subjects. Siddiq A, et al. Diabetologia, 2007 Mar. PMID 17235527.

Plasma pancreatic polypeptide levels are associated with differences in body fat distribution in human subjects. Tong J, et al. Diabetologia, 2007 Feb. PMID 17171555.

Human pancreatic polypeptide has a marked diurnal rhythm that is affected by ageing and is associated with the gastric TFF2 circadian rhythm. Johns CE, et al. Peptides, 2006 Jun. PMID 16359755.

A role for pancreatic polypeptide in the regulation of gastric emptying and short-term metabolic control. Schmidt PT, et al. J Clin Endocrinol Metab, 2005 Sep. PMID 15998783.