

**Goat Anti-PCBP4 Antibody**  
**Peptide-affinity purified goat antibody**  
**Catalog # AF1795a****Specification**

---

**Goat Anti-PCBP4 Antibody - Product Information**

Application	WB
Primary Accession	<a href="#">P57723</a>
Other Accession	<a href="#">NP_127503</a> , <a href="#">57060</a> , <a href="#">59092 (mouse)</a> , <a href="#">363133 (rat)</a>
Reactivity	Human
Predicted	Mouse, Rat, Dog
Host	Goat
Clonality	Polyclonal
Concentration	100ug/200ul
Isotype	IgG
Calculated MW	41482

**Goat Anti-PCBP4 Antibody - Additional Information****Gene ID** 57060**Other Names**

Poly(rC)-binding protein 4, Alpha-CP4, PCBP4

**Format**

0.5 mg IgG/ml in Tris saline (20mM Tris pH7.3, 150mM NaCl), 0.02% sodium azide, with 0.5% bovine serum albumin

**Storage**

Maintain refrigerated at 2-8°C for up to 6 months. For long term storage store at -20°C in small aliquots to prevent freeze-thaw cycles.

**Precautions**

Goat Anti-PCBP4 Antibody is for research use only and not for use in diagnostic or therapeutic procedures.

**Goat Anti-PCBP4 Antibody - Protein Information****Name** PCBP4**Function**

Single-stranded nucleic acid binding protein that binds preferentially to oligo dC.

**Cellular Location**

Cytoplasm.

## Goat Anti-PCBP4 Antibody - Protocols

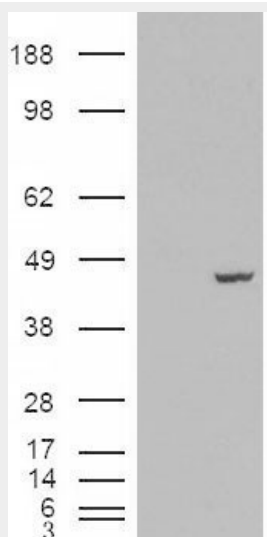
Provided below are standard protocols that you may find useful for product applications.

- [Western Blot](#)
- [Blocking Peptides](#)
- [Dot Blot](#)
- [Immunohistochemistry](#)
- [Immunofluorescence](#)
- [Immunoprecipitation](#)
- [Flow Cytometry](#)
- [Cell Culture](#)

## Goat Anti-PCBP4 Antibody - Images



AF1795a (0.03 µg/ml) staining of HeLa cell lysate (35 µg protein in RIPA buffer). Primary incubation was 1 hour. Detected by chemiluminescence.



HEK293 overexpressing PCBP4 (RC200749) and probed with AF1795a (mock transfection in first lane), tested by Origene.

## Goat Anti-PCBP4 Antibody - Background

This gene encodes a member of the KH-domain protein subfamily. Proteins of this subfamily, also

referred to as alpha-CPs, bind to RNA with a specificity for C-rich pyrimidine regions. Alpha-CPs play important roles in post-transcriptional activities and have different cellular distributions. This gene is induced by the p53 tumor suppressor, and the encoded protein can suppress cell proliferation by inducing apoptosis and cell cycle arrest in G(2)-M. This gene's protein is found in the cytoplasm, yet it lacks the nuclear localization signals found in other subfamily members. Multiple alternatively spliced transcript variants have been described, but the full-length nature for only some has been determined.

#### **Goat Anti-PCBP4 Antibody - References**

Variation at the NFATC2 Locus Increases the Risk of Thiazolinedione-Induced Edema in the Diabetes REduction Assessment with ramipril and rosiglitazone Medication (DREAM) Study. Bailey SD, et al. Diabetes Care, 2010 Jul 13. PMID 20628086.

Gene-centric association signals for lipids and apolipoproteins identified via the HumanCVD BeadChip. Talmud PJ, et al. Am J Hum Genet, 2009 Nov. PMID 19913121.

Expression of alpha CP-4 inhibits cell cycle progression and suppresses tumorigenicity of lung cancer cells. Castaño Z, et al. Int J Cancer, 2008 Apr 1. PMID 17973258.

A protein-protein interaction network for human inherited ataxias and disorders of Purkinje cell degeneration. Lim J, et al. Cell, 2006 May 19. PMID 16713569.

Diversification of transcriptional modulation: large-scale identification and characterization of putative alternative promoters of human genes. Kimura K, et al. Genome Res, 2006 Jan. PMID 16344560.