

Goat Anti-PHR1 Antibody
Peptide-affinity purified goat antibody
Catalog # AF1823a**Specification**

Goat Anti-PHR1 Antibody - Product Information

Application	WB
Primary Accession	Q9UF11
Other Accession	NP_001123508 , 58473 , 27276 (mouse) , 64471 (rat)
Reactivity	Rat
Predicted	Human, Mouse, Cow
Host	Goat
Clonality	Polyclonal
Concentration	100ug/200ul
Isotype	IgG
Calculated MW	27186

Goat Anti-PHR1 Antibody - Additional Information**Gene ID** 58473**Other Names**

Pleckstrin homology domain-containing family B member 1, PH domain-containing family B member 1, Evectin-1, PH domain-containing protein in retina 1, PHRET1, Pleckstrin homology domain retinal protein 1, PLEKHB1, EVT1, KPL1, PHR1, PHRET1

Format

0.5 mg IgG/ml in Tris saline (20mM Tris pH7.3, 150mM NaCl), 0.02% sodium azide, with 0.5% bovine serum albumin

Storage

Maintain refrigerated at 2-8°C for up to 6 months. For long term storage store at -20°C in small aliquots to prevent freeze-thaw cycles.

Precautions

Goat Anti-PHR1 Antibody is for research use only and not for use in diagnostic or therapeutic procedures.

Goat Anti-PHR1 Antibody - Protein Information**Name** PLEKHB1**Cellular Location**

Membrane. Cytoplasm {ECO:0000250|UniProtKB:Q9QYE9}. Note=Localizes to the apical juxta-nuclear Golgi region of the cytoplasm (By similarity). Membrane- associated (PubMed:10585447). Highly expressed in the outer segments of photoreceptor cells, both in rods and cones

(PubMed:10585447) {ECO:0000250|UniProtKB:Q9QYE9, ECO:0000269|PubMed:10585447}

Tissue Location

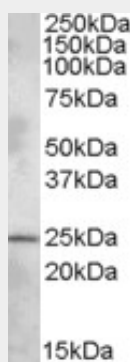
Highly expressed in retina and brain. Levels are very low or not detectable in all other tissues tested

Goat Anti-PHR1 Antibody - Protocols

Provided below are standard protocols that you may find useful for product applications.

- [Western Blot](#)
- [Blocking Peptides](#)
- [Dot Blot](#)
- [Immunohistochemistry](#)
- [Immunofluorescence](#)
- [Immunoprecipitation](#)
- [Flow Cytometry](#)
- [Cell Culture](#)

Goat Anti-PHR1 Antibody - Images



AF1823a (1 µg/ml) staining of Rat Brain lysate (35 µg protein in RIPA buffer). Primary incubation was 1 hour. Detected by chemiluminescence.

Goat Anti-PHR1 Antibody - References

Variation at the NFATC2 Locus Increases the Risk of Thiazolinedinedione-Induced Edema in the Diabetes REduction Assessment with ramipril and rosiglitazone Medication (DREAM) Study. Bailey SD, et al. Diabetes Care, 2010 Jul 13. PMID 20628086.

Genome-wide copy number variation analysis in attention-deficit/hyperactivity disorder: association with neuropeptide Y gene dosage in an extended pedigree. Lesch KP, et al. Mol Psychiatry, 2010 Mar 23. PMID 20308990.

PHR1 is a vesicle-bound protein abundantly expressed in mature olfactory neurons. Tan B, et al. Laryngoscope, 2010 May. PMID 20301200.

Gene-centric association signals for lipids and apolipoproteins identified via the HumanCVD BeadChip. Talmud PJ, et al. Am J Hum Genet, 2009 Nov. PMID 19913121.

High-throughput mapping of a dynamic signaling network in mammalian cells. Barrios-Rodiles M, et al. Science, 2005 Mar 11. PMID 15761153.