

**Goat Anti-RAC2 Antibody**  
**Peptide-affinity purified goat antibody**  
**Catalog # AF1899a****Specification**

---

**Goat Anti-RAC2 Antibody - Product Information**

Application	WB, IHC
Primary Accession	<a href="#">P15153</a>
Other Accession	<a href="#">NP_002863</a> , <a href="#">5880</a>
Reactivity	Human
Predicted	Mouse, Rat
Host	Goat
Clonality	Polyclonal
Concentration	100ug/200ul
Isotype	IgG
Calculated MW	21429

**Goat Anti-RAC2 Antibody - Additional Information****Gene ID** 5880**Other Names**

Ras-related C3 botulinum toxin substrate 2, GX, Small G protein, p21-Rac2, RAC2

**Format**

0.5 mg IgG/ml in Tris saline (20mM Tris pH7.3, 150mM NaCl), 0.02% sodium azide, with 0.5% bovine serum albumin

**Storage**

Maintain refrigerated at 2-8°C for up to 6 months. For long term storage store at -20°C in small aliquots to prevent freeze-thaw cycles.

**Precautions**

Goat Anti-RAC2 Antibody is for research use only and not for use in diagnostic or therapeutic procedures.

**Goat Anti-RAC2 Antibody - Protein Information****Name** RAC2**Function**

Plasma membrane-associated small GTPase which cycles between an active GTP-bound and inactive GDP-bound state. In active state binds to a variety of effector proteins to regulate cellular responses, such as secretory processes, phagocytosis of apoptotic cells and epithelial cell polarization. Augments the production of reactive oxygen species (ROS) by NADPH oxidase.

**Cellular Location**

Cytoplasm. Note=Membrane-associated when activated

#### Tissue Location

Hematopoietic specific.

#### Goat Anti-RAC2 Antibody - Protocols

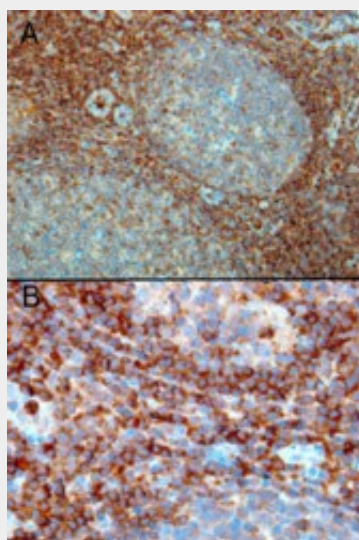
Provided below are standard protocols that you may find useful for product applications.

- [Western Blot](#)
- [Blocking Peptides](#)
- [Dot Blot](#)
- [Immunohistochemistry](#)
- [Immunofluorescence](#)
- [Immunoprecipitation](#)
- [Flow Cytometry](#)
- [Cell Culture](#)

#### Goat Anti-RAC2 Antibody - Images



AF1899a staining (0.3 µg/ml) of Human Tonsil lysate (RIPA buffer, 35 µg total protein per lane). Primary incubated for 1 hour. Detected by western blot using chemiluminescence.



AF1899a (0.3 µg/ml) staining of paraffin embedded Human Tonsil. Microwaved antigen retrieval with Tris/EDTA buffer pH9, HRP-staining. A) Strong staining in the interfollicular area and mantle zone. B) Positive cells in the interfollicular area.

#### **Goat Anti-RAC2 Antibody - Background**

The protein encoded by this gene is a GTPase which belongs to the RAS superfamily of small GTP-binding proteins. Members of this superfamily appear to regulate a diverse array of cellular events, including the control of cell growth, cytoskeletal reorganization, and the activation of protein kinases.

#### **Goat Anti-RAC2 Antibody - References**

Polymorphisms in innate immunity genes and risk of childhood leukemia. Han S, et al. Hum Immunol, 2010 Jul. PMID 20438785.  
Risk of meningioma and common variation in genes related to innate immunity. Rajaraman P, et al. Cancer Epidemiol Biomarkers Prev, 2010 May. PMID 20406964.  
Polymorphisms in innate immunity genes and patients response to dendritic cell-based HIV immuno-treatment. Segat L, et al. Vaccine, 2010 Mar 2. PMID 20056178.  
Differential regulation of phospholipase C-beta2 activity and membrane interaction by Galphaq, Gbeta1gamma2, and Rac2. Gutman O, et al. J Biol Chem, 2010 Feb 5. PMID 20007712.  
Human neutrophils coordinate chemotaxis by differential activation of Rac1 and Rac2. Zhang H, et al. J Immunol, 2009 Aug 15. PMID 19625648.