

**Goat Anti-SH2D4A Antibody**  
**Peptide-affinity purified goat antibody**  
**Catalog # AF1986a****Specification**

---

**Goat Anti-SH2D4A Antibody - Product Information**

Application	WB
Primary Accession	<a href="#">Q9H788</a>
Other Accession	<a href="#">NP_071354</a> , <a href="#">63898</a>
Reactivity	Human
Predicted	Dog
Host	Goat
Clonality	Polyclonal
Concentration	100ug/200ul
Isotype	IgG
Calculated MW	52727

**Goat Anti-SH2D4A Antibody - Additional Information****Gene ID** 63898**Other Names**

SH2 domain-containing protein 4A, Protein SH(2)A, Protein phosphatase 1 regulatory subunit 38, SH2D4A, PPP1R38, SH2A

**Format**

0.5 mg IgG/ml in Tris saline (20mM Tris pH7.3, 150mM NaCl), 0.02% sodium azide, with 0.5% bovine serum albumin

**Storage**

Maintain refrigerated at 2-8°C for up to 6 months. For long term storage store at -20°C in small aliquots to prevent freeze-thaw cycles.

**Precautions**

Goat Anti-SH2D4A Antibody is for research use only and not for use in diagnostic or therapeutic procedures.

**Goat Anti-SH2D4A Antibody - Protein Information****Name** SH2D4A**Synonyms** PPP1R38, SH2A**Function**

Inhibits estrogen-induced cell proliferation by competing with PLCG for binding to ESR1, blocking the effect of estrogen on PLCG and repressing estrogen-induced proliferation. May play a role in T-cell development and function.

**Cellular Location**

Cytoplasm. Note=Located at podocyte foot processes.

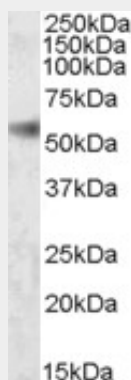
**Tissue Location**

Ubiquitously expressed. Aberrantly expressed in some cancers.

**Goat Anti-SH2D4A Antibody - Protocols**

Provided below are standard protocols that you may find useful for product applications.

- [Western Blot](#)
- [Blocking Peptides](#)
- [Dot Blot](#)
- [Immunohistochemistry](#)
- [Immunofluorescence](#)
- [Immunoprecipitation](#)
- [Flow Cytometry](#)
- [Cell Culture](#)

**Goat Anti-SH2D4A Antibody - Images**

AF1986a (0.1 µg/ml) staining of Human Kidney lysate (35 µg protein in RIPA buffer). Primary incubation was 1 hour. Detected by chemiluminescence.

**Goat Anti-SH2D4A Antibody - References**

Personalized smoking cessation: interactions between nicotine dose, dependence and quit-success genotype score. Rose JE, et al. Mol Med, 2010 Jul-Aug. PMID 20379614.

SH2D4A regulates cell proliferation via the ERalpha/PLC-gamma/PKC pathway. Li T, et al. BMB Rep, 2009 Aug 31. PMID 19712589.

An empirical framework for binary interactome mapping. Venkatesan K, et al. Nat Methods, 2009 Jan. PMID 19060904.

Genetic analysis of SH2D4A, a novel adapter protein related to T cell-specific adapter and adapter protein in lymphocytes of unknown function, reveals a redundant function in T cells. Lapinski PE, et al. J Immunol, 2008 Aug 1. PMID 18641339.

Toward a confocal subcellular atlas of the human proteome. Barbe L, et al. Mol Cell Proteomics, 2008 Mar. PMID 18029348.