

Goat Anti-Swiprosin 1 / EFHD2 Antibody
Peptide-affinity purified goat antibody
Catalog # AF2054a**Specification**

Goat Anti-Swiprosin 1 / EFHD2 Antibody - Product Information

| | |
|-------------------|---|
| Application | WB, IHC |
| Primary Accession | O96C19 |
| Other Accession | NP_077305 , 79180 , 27984 (mouse) |
| Reactivity | Human, Mouse |
| Predicted | Rat, Dog, Cow |
| Host | Goat |
| Clonality | Polyclonal |
| Concentration | 100ug/200ul |
| Isotype | IgG |
| Calculated MW | 26697 |

Goat Anti-Swiprosin 1 / EFHD2 Antibody - Additional Information**Gene ID** 79180**Other Names**

EF-hand domain-containing protein D2, Swiprosin-1, EFHD2, SWS1

Format

0.5 mg IgG/ml in Tris saline (20mM Tris pH7.3, 150mM NaCl), 0.02% sodium azide, with 0.5% bovine serum albumin

Storage

Maintain refrigerated at 2-8°C for up to 6 months. For long term storage store at -20°C in small aliquots to prevent freeze-thaw cycles.

Precautions

Goat Anti-Swiprosin 1 / EFHD2 Antibody is for research use only and not for use in diagnostic or therapeutic procedures.

Goat Anti-Swiprosin 1 / EFHD2 Antibody - Protein Information**Name** EFHD2**Synonyms** SWS1**Function**

May regulate B-cell receptor (BCR)-induced immature and primary B-cell apoptosis. Plays a role as negative regulator of the canonical NF-kappa-B-activating branch. Controls spontaneous apoptosis through the regulation of BCL2L1 abundance.

Cellular Location

Membrane raft. Note=In a mouse immature B-cell line WEHI-231.

Tissue Location

Found in lymphocytes; preferentially expressed in CD8+ cells.

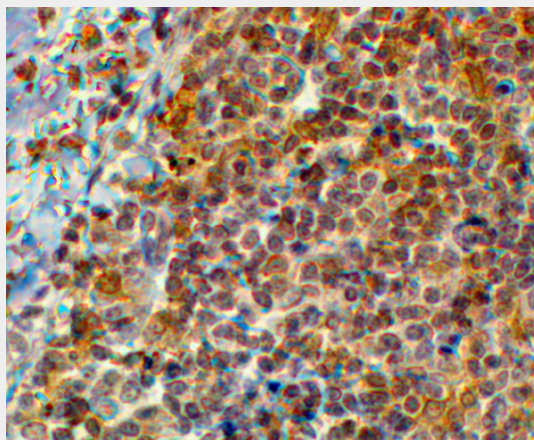
Goat Anti-Swiprosin 1 / EFHD2 Antibody - Protocols

Provided below are standard protocols that you may find useful for product applications.

- [Western Blot](#)
- [Blocking Peptides](#)
- [Dot Blot](#)
- [Immunohistochemistry](#)
- [Immunofluorescence](#)
- [Immunoprecipitation](#)
- [Flow Cytometry](#)
- [Cell Culture](#)

Goat Anti-Swiprosin 1 / EFHD2 Antibody - Images

AF2054a (0.1 µg/ml) staining of human lymph node lysate. Primary incubation was 1 hour. Detected by chemiluminescence.



B6552 (2 µg/ml) staining of paraffin embedded Human Tonsil. Steamed antigen retrieval with citrate buffer pH 6, HRP-staining.

Goat Anti-Swiprosin 1 / EFHD2 Antibody - References

Proteome analysis of the thalamus and cerebrospinal fluid reveals glycolysis dysfunction and potential biomarkers candidates for schizophrenia. Martins-de-Souza D, et al. J Psychiatr Res, 2010 May 14. PMID 20471030.

Swiprosin-1 is expressed in mast cells and up-regulated through the protein kinase C beta I/eta pathway. Thylur RP, et al. J Cell Biochem, 2009 Oct 15. PMID 19693767.

Prefrontal cortex shotgun proteome analysis reveals altered calcium homeostasis and immune system imbalance in schizophrenia. Martins-de-Souza D, et al. Eur Arch Psychiatry Clin Neurosci, 2009 Apr. PMID 19165527.

The novel adaptor protein Swiprosin-1 enhances BCR signals and contributes to BCR-induced apoptosis. Avramidou A, et al. Cell Death Differ, 2007 Nov. PMID 17673920.

Global, in vivo, and site-specific phosphorylation dynamics in signaling networks. Olsen JV, et al. Cell, 2006 Nov 3. PMID 17081983.