

Goat Anti-Synaptogyrin 2 / Cellugyrin Antibody
Peptide-affinity purified goat antibody
Catalog # AF2055a**Specification**

Goat Anti-Synaptogyrin 2 / Cellugyrin Antibody - Product Information

Application	WB
Primary Accession	O43760
Other Accession	NP_004701 , 9144
Reactivity	Human
Predicted	Mouse
Host	Goat
Clonality	Polyclonal
Concentration	100ug/200ul
Isotype	IgG
Calculated MW	24810

Goat Anti-Synaptogyrin 2 / Cellugyrin Antibody - Additional Information**Gene ID** 9144**Other Names**

Synaptogyrin-2, Cellugyrin, SYNGR2

Format

0.5 mg IgG/ml in Tris saline (20mM Tris pH7.3, 150mM NaCl), 0.02% sodium azide, with 0.5% bovine serum albumin

Storage

Maintain refrigerated at 2-8°C for up to 6 months. For long term storage store at -20°C in small aliquots to prevent freeze-thaw cycles.

Precautions

Goat Anti-Synaptogyrin 2 / Cellugyrin Antibody is for research use only and not for use in diagnostic or therapeutic procedures.

Goat Anti-Synaptogyrin 2 / Cellugyrin Antibody - Protein Information**Name** SYNGR2 ([HGNC:11499](#))**Function**

May play a role in regulated exocytosis. In neuronal cells, modulates the localization of synaptophysin/SYP into synaptic-like microvesicles and may therefore play a role in the formation and/or the maturation of this vesicles. May also play a role in GLUT4 storage and transport to the plasma membrane.

Cellular Location

Cytoplasmic vesicle membrane {ECO:0000250|UniProtKB:O54980}; Multi-pass membrane protein. Cytoplasmic vesicle, secretory vesicle, synaptic vesicle membrane {ECO:0000250|UniProtKB:O54980}; Multi-pass membrane protein. Note=Localizes to cytoplasmic vesicles associated with the recycling endosomes. {ECO:0000250|UniProtKB:O54980}

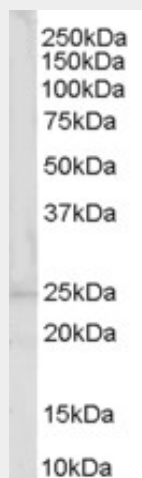
Tissue Location

Ubiquitous; low expression in brain.

Goat Anti-Synaptogyrin 2 / Cellugyrin Antibody - Protocols

Provided below are standard protocols that you may find useful for product applications.

- [Western Blot](#)
- [Blocking Peptides](#)
- [Dot Blot](#)
- [Immunohistochemistry](#)
- [Immunofluorescence](#)
- [Immunoprecipitation](#)
- [Flow Cytometry](#)
- [Cell Culture](#)

Goat Anti-Synaptogyrin 2 / Cellugyrin Antibody - Images

AF2055a (0.3 µg/ml) staining of Human Muscle lysate (35 µg protein in RIPA buffer). Primary incubation was 1 hour. Detected by chemiluminescence.

Goat Anti-Synaptogyrin 2 / Cellugyrin Antibody - Background

This gene encodes an integral membrane protein containing four transmembrane regions and a C-terminal cytoplasmic tail that is tyrosine phosphorylated. The exact function of this protein is unclear, but studies of a similar rat protein suggest that it may play a role in regulating membrane traffic in non-neuronal cells. The gene belongs to the synaptogyrin gene family.

Goat Anti-Synaptogyrin 2 / Cellugyrin Antibody - References

The status, quality, and expansion of the NIH full-length cDNA project: the Mammalian Gene Collection (MGC). Gerhard DS, et al. Genome Res, 2004 Oct. PMID 15489334.
The secreted protein discovery initiative (SPDI), a large-scale effort to identify novel human secreted and transmembrane proteins: a bioinformatics assessment. Clark HF, et al. Genome Res,

2003 Oct. PMID 12975309.

Generation and initial analysis of more than 15,000 full-length human and mouse cDNA sequences. Strausberg RL, et al. Proc Natl Acad Sci U S A, 2002 Dec 24. PMID 12477932.

Characterization of the human synaptogyrin gene family. Kedra D, et al. Hum Genet, 1998 Aug. PMID 9760194.

Cellugyrin, a novel ubiquitous form of synaptogyrin that is phosphorylated by pp60c-src. Janz R, et al. J Biol Chem, 1998 Jan 30. PMID 9446595.