

Goat Anti-SM22 Alpha / Transgelin Antibody
Peptide-affinity purified goat antibody
Catalog # AF2063a**Specification**

Goat Anti-SM22 Alpha / Transgelin Antibody - Product Information

Application	WB, IHC
Primary Accession	Q01995
Other Accession	NP_001001522 , 6876 , 21345 (mouse) , 25123 (rat)
Reactivity	Human, Mouse, Rat, Rabbit
Predicted	Dog, Cow
Host	Goat
Clonality	Polyclonal
Concentration	100ug/200ul
Isotype	IgG
Calculated MW	22611

Goat Anti-SM22 Alpha / Transgelin Antibody - Additional Information**Gene ID** 6876**Other Names**

Transgelin, 22 kDa actin-binding protein, Protein WS3-10, Smooth muscle protein 22-alpha, SM22-alpha, TAGLN, SM22, WS3-10

Format

0.5 mg IgG/ml in Tris saline (20mM Tris pH7.3, 150mM NaCl), 0.02% sodium azide, with 0.5% bovine serum albumin

Storage

Maintain refrigerated at 2-8°C for up to 6 months. For long term storage store at -20°C in small aliquots to prevent freeze-thaw cycles.

Precautions

Goat Anti-SM22 Alpha / Transgelin Antibody is for research use only and not for use in diagnostic or therapeutic procedures.

Goat Anti-SM22 Alpha / Transgelin Antibody - Protein Information**Name** TAGLN**Synonyms** SM22, WS3-10**Function**

Actin cross-linking/gelling protein (By similarity). Involved in calcium interactions and contractile properties of the cell that may contribute to replicative senescence.

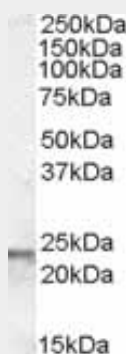
Cellular Location

Cytoplasm.

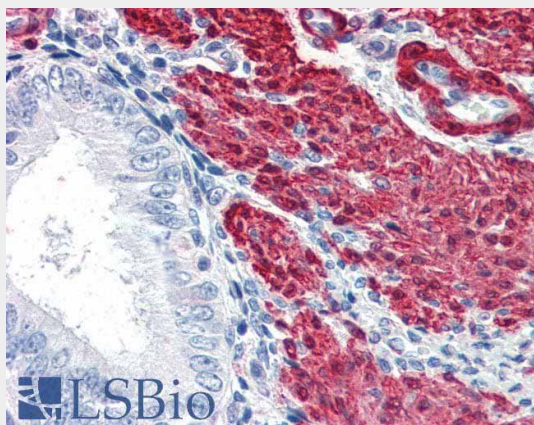
Goat Anti-SM22 Alpha / Transgelin Antibody - Protocols

Provided below are standard protocols that you may find useful for product applications.

- [Western Blot](#)
- [Blocking Peptides](#)
- [Dot Blot](#)
- [Immunohistochemistry](#)
- [Immunofluorescence](#)
- [Immunoprecipitation](#)
- [Flow Cytometry](#)
- [Cell Culture](#)

Goat Anti-SM22 Alpha / Transgelin Antibody - Images

AF2063a (0.01 µg/ml) staining of Human Placenta lysate (35 µg protein in RIPA buffer). Primary incubation was 1 hour. Detected by chemiluminescence.



AF2063a (5 µg/ml) staining of paraffin embedded Human Uterus. Steamed antigen retrieval with citrate buffer pH 6, AP-staining. This data was obtained using a previous batch.

Goat Anti-SM22 Alpha / Transgelin Antibody - Background

The protein encoded by this gene is a transformation and shape-change sensitive actin cross-linking/gelling protein found in fibroblasts and smooth muscle. Its expression is down-regulated in many cell lines, and this down-regulation may be an early and sensitive marker for the onset of transformation. A functional role of this protein is unclear. Two transcript variants

encoding the same protein have been found for this gene.

Goat Anti-SM22 Alpha / Transgelin Antibody - References

Variation at the NFATC2 Locus Increases the Risk of Thiazolinedione-Induced Edema in the Diabetes REduction Assessment with ramipril and rosiglitazone Medication (DREAM) Study. Bailey SD, et al. Diabetes Care, 2010 Jul 13. PMID 20628086.

[A study of the single nucleotide polymorphism in seven genes (GHR, IGFBP3, IGFR1, IRS1, FMN1, ANXA2, TaGLN) in ethnic Russians and in patients with prostate cancer] Lisitskaia KV, et al. Mol Gen Mikrobiol Virusol, 2010. PMID 20540360.

Personalized smoking cessation: interactions between nicotine dose, dependence and quit-success genotype score. Rose JE, et al. Mol Med, 2010 Jul-Aug. PMID 20379614.

Loss of SM22 is a characteristic signature of colon carcinogenesis and its restoration suppresses colon tumorigenicity in vivo and in vitro. Yeo M, et al. Cancer, 2010 Jun 1. PMID 20336793.

Transgelin induces apoptosis of human prostate LNCaP cells through its interaction with p53. Zhang ZW, et al. Asian J Androl, 2010 Mar. PMID 20098441.