

Goat Anti-TIM50 Antibody
Peptide-affinity purified goat antibody
Catalog # AF2090a**Specification**

Goat Anti-TIM50 Antibody - Product Information

Application	WB
Primary Accession	Q3ZCQ8
Other Accession	NP_001001563 , 92609
Reactivity	Human
Predicted	Mouse, Rat, Dog, Cow
Host	Goat
Clonality	Polyclonal
Concentration	100ug/200ul
Isotype	IgG
Calculated MW	39646

Goat Anti-TIM50 Antibody - Additional Information**Gene ID** 92609**Other Names**

Mitochondrial import inner membrane translocase subunit TIM50, TIMM50, TIM50

Format

0.5 mg IgG/ml in Tris saline (20mM Tris pH7.3, 150mM NaCl), 0.02% sodium azide, with 0.5% bovine serum albumin

Storage

Maintain refrigerated at 2-8°C for up to 6 months. For long term storage store at -20°C in small aliquots to prevent freeze-thaw cycles.

Precautions

Goat Anti-TIM50 Antibody is for research use only and not for use in diagnostic or therapeutic procedures.

Goat Anti-TIM50 Antibody - Protein Information**Name** TIMM50**Synonyms** TIM50**Function**

Essential component of the TIM23 complex, a complex that mediates the translocation of transit peptide-containing proteins across the mitochondrial inner membrane. Has some phosphatase activity in vitro; however such activity may not be relevant in vivo.

Cellular Location

Mitochondrion inner membrane; Single-pass membrane protein

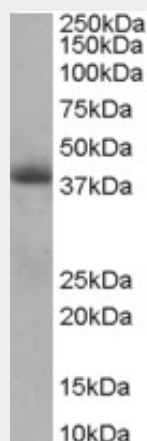
Tissue Location

Widely expressed. Expressed at higher level in brain, kidney and liver (at protein level)

Goat Anti-TIM50 Antibody - Protocols

Provided below are standard protocols that you may find useful for product applications.

- [Western Blot](#)
- [Blocking Peptides](#)
- [Dot Blot](#)
- [Immunohistochemistry](#)
- [Immunofluorescence](#)
- [Immunoprecipitation](#)
- [Flow Cytometry](#)
- [Cell Culture](#)

Goat Anti-TIM50 Antibody - Images

AF2090a staining (0.5 µg/ml) of Human Heart lysate (RIPA buffer, 35 µg total protein per lane). Primary incubated for 1 hour. Detected by western blot using chemiluminescence.

Goat Anti-TIM50 Antibody - References

Large-scale mapping of human protein-protein interactions by mass spectrometry. Ewing RM, et al. Mol Syst Biol, 2007. PMID 17353931.

A human protein-protein interaction network: a resource for annotating the proteome. Stelzl U, et al. Cell, 2005 Sep 23. PMID 16169070.

Tim50a, a nuclear isoform of the mitochondrial Tim50, interacts with proteins involved in snRNP biogenesis. Xu H, et al. BMC Cell Biol, 2005 Jul 11. PMID 16008839.

The status, quality, and expansion of the NIH full-length cDNA project: the Mammalian Gene Collection (MGC). Gerhard DS, et al. Genome Res, 2004 Oct. PMID 15489334.

Tim50, a component of the mitochondrial translocator, regulates mitochondrial integrity and cell death. Guo Y, et al. J Biol Chem, 2004 Jun 4. PMID 15044455.