

Goat Anti-TMPRSS4 Antibody
Peptide-affinity purified goat antibody
Catalog # AF2097a**Specification**

Goat Anti-TMPRSS4 Antibody - Product Information

Application	WB
Primary Accession	Q9NRS4
Other Accession	NP_001077416 , 56649 , 214523 (mouse)
Reactivity	Human
Predicted	Mouse
Host	Goat
Clonality	Polyclonal
Concentration	100ug/200ul
Isotype	IgG
Calculated MW	48246

Goat Anti-TMPRSS4 Antibody - Additional Information**Gene ID** 56649**Other Names**

Transmembrane protease serine 4, 3.4.21.-, Channel-activating protease 2, CAPH2, Membrane-type serine protease 2, MT-SP2, TMPRSS4, TMPRSS3

Format

0.5 mg IgG/ml in Tris saline (20mM Tris pH7.3, 150mM NaCl), 0.02% sodium azide, with 0.5% bovine serum albumin

Storage

Maintain refrigerated at 2-8°C for up to 6 months. For long term storage store at -20°C in small aliquots to prevent freeze-thaw cycles.

Precautions

Goat Anti-TMPRSS4 Antibody is for research use only and not for use in diagnostic or therapeutic procedures.

Goat Anti-TMPRSS4 Antibody - Protein Information**Name** TMPRSS4 ([HGNC:11878](#))**Function**

Plasma membrane-anchored serine protease that directly induces processing of pro-uPA/PLAU into the active form through proteolytic activity (PubMed:24434139). Seems to be capable of activating ENaC (By similarity).

Cellular Location

Cell membrane; Single-pass type II membrane protein

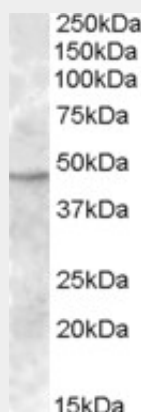
Tissue Location

High levels in pancreatic, gastric, colorectal and ampullary cancer. Very weak expression in normal gastrointestinal and urogenital tract (PubMed:10825129). Coexpressed with ACE2 within mature enterocytes (PubMed:32404436).

Goat Anti-TMPRSS4 Antibody - Protocols

Provided below are standard protocols that you may find useful for product applications.

- [Western Blot](#)
- [Blocking Peptides](#)
- [Dot Blot](#)
- [Immunohistochemistry](#)
- [Immunofluorescence](#)
- [Immunoprecipitation](#)
- [Flow Cytometry](#)
- [Cell Culture](#)

Goat Anti-TMPRSS4 Antibody - Images

AF2097a (1 µg/ml) staining of Human Bone Marrow lysate (35 µg protein in RIPA buffer). Primary incubation was 1 hour. Detected by chemiluminescence.

Goat Anti-TMPRSS4 Antibody - Background

This gene encodes a member of the serine protease family. Serine proteases are known to be involved in a variety of biological processes, whose malfunction often leads to human diseases and disorders. This gene was identified as a gene overexpressed in pancreatic carcinoma. The encoded protein is membrane bound with a N-terminal anchor sequence and a glycosylated extracellular region containing the serine protease domain. Multiple transcript variants encoding different isoforms have been found for this gene.

Goat Anti-TMPRSS4 Antibody - References

TMRSS4 induces invasion and epithelial-mesenchymal transition through upregulation of integrin alpha5 and its signaling pathways. Kim S, et al. Carcinogenesis, 2010 Apr. PMID 20118200.
Proteolytic activation of the 1918 influenza virus hemagglutinin. Chaipan C, et al. J Virol, 2009 Apr. PMID 19158246.

Toward a confocal subcellular atlas of the human proteome. Barbe L, et al. Mol Cell Proteomics, 2008 Mar. PMID 18029348.

TMPRSS4 promotes invasion, migration and metastasis of human tumor cells by facilitating an epithelial-mesenchymal transition. Jung H, et al. Oncogene, 2008 Apr 17. PMID 17968309.

The status, quality, and expansion of the NIH full-length cDNA project: the Mammalian Gene Collection (MGC). Gerhard DS, et al. Genome Res, 2004 Oct. PMID 15489334.