

DAPP1 Antibody (C-Term)
Peptide-affinity purified goat antibody
Catalog # AF2240a**Specification**

DAPP1 Antibody (C-Term) - Product Information

Application	WB
Primary Accession	O9UN19
Other Accession	AAF14578.1 , 27071
Reactivity	Human
Host	Goat
Clonality	Polyclonal
Concentration	0.5 mg/ml
Isotype	IgG
Calculated MW	32194

DAPP1 Antibody (C-Term) - Additional Information**Gene ID** 27071**Other Names**

Dual adapter for phosphotyrosine and 3-phosphotyrosine and 3-phosphoinositide, hDAPP1, B lymphocyte adapter protein Bam32, B-cell adapter molecule of 32 kDa, DAPP1, BAM32

Format

0.5 mg/ml in Tris saline, 0.02% sodium azide, pH7.3 with 0.5% bovine serum albumin

Storage

Maintain refrigerated at 2-8°C for up to 6 months. For long term storage store at -20°C in small aliquots to prevent freeze-thaw cycles.

Precautions

DAPP1 Antibody (C-Term) is for research use only and not for use in diagnostic or therapeutic procedures.

DAPP1 Antibody (C-Term) - Protein Information**Name** DAPP1**Synonyms** BAM32**Function**

May act as a B-cell-associated adapter that regulates B-cell antigen receptor (BCR)-signaling downstream of PI3K.

Cellular Location

Cytoplasm. Membrane; Peripheral membrane protein. Note=Membrane-associated after cell

stimulation leading to its translocation

Tissue Location

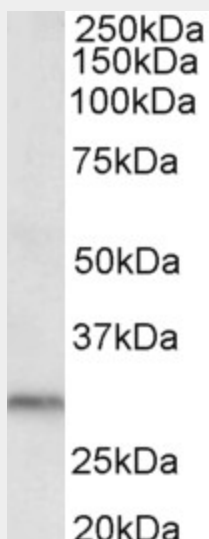
Highly expressed in placenta and lung, followed by brain, heart, kidney, liver, pancreas and skeletal muscle. Expressed by B-lymphocytes, but not T-lymphocytes or nonhematopoietic cells

DAPP1 Antibody (C-Term) - Protocols

Provided below are standard protocols that you may find useful for product applications.

- [Western Blot](#)
- [Blocking Peptides](#)
- [Dot Blot](#)
- [Immunohistochemistry](#)
- [Immunofluorescence](#)
- [Immunoprecipitation](#)
- [Flow Cytometry](#)
- [Cell Culture](#)

DAPP1 Antibody (C-Term) - Images



AF2240a (0.5 µg/ml) staining of Human Kidney lysate (35 µg protein in RIPA buffer). Primary incubation was 1 hour. Detected by chemiluminescence.

DAPP1 Antibody (C-Term) - Background

This antibody was raised against the C-terminus of NP_055210.1. However, NCBI has changed the version to NP_055210.2 thus losing the C-terminal epitope.

DAPP1 Antibody (C-Term) - References

A novel B lymphocyte-associated adaptor protein, Bam32, regulates antigen receptor signaling downstream of phosphatidylinositol 3-kinase. Marshall AJ, Niir H, Lerner CG, Yun TJ, Thomas S, Disteche CM, Clark EA. J Exp Med. 2000 Apr 17;191(8):1319-32. PMID: 10770799