

GOLPH2 Antibody (C-Term)
Peptide-affinity purified goat antibody
Catalog # AF2285a**Specification**

GOLPH2 Antibody (C-Term) - Product Information

Application	WB, IHC
Primary Accession	Q8NBJ4
Other Accession	NP_057632.2 , NP_808800.1 , 51280
Reactivity	Human
Host	Goat
Clonality	Polyclonal
Concentration	0.5 mg/ml
Isotype	IgG
Calculated MW	45333

GOLPH2 Antibody (C-Term) - Additional Information**Gene ID** 51280**Other Names**

Golgi membrane protein 1, Golgi membrane protein GP73, Golgi phosphoprotein 2, GOLM1, C9orf155, GOLPH2

Format

0.5 mg/ml in Tris saline, 0.02% sodium azide, pH7.3 with 0.5% bovine serum albumin

Storage

Maintain refrigerated at 2-8°C for up to 6 months. For long term storage store at -20°C in small aliquots to prevent freeze-thaw cycles.

Precautions

GOLPH2 Antibody (C-Term) is for research use only and not for use in diagnostic or therapeutic procedures.

GOLPH2 Antibody (C-Term) - Protein Information**Name** GOLM1**Synonyms** C9orf155, GOLPH2**Function**

Unknown. Cellular response protein to viral infection.

Cellular Location

Golgi apparatus, cis-Golgi network membrane; Single-pass type II membrane protein. Note=Early Golgi. Cycles via the cell surface and endosomes upon luminal pH disruption

Tissue Location

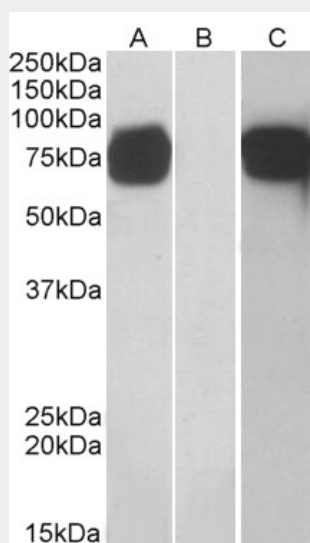
Widely expressed. Highly expressed in colon, prostate, trachea and stomach. Expressed at lower level in testis, muscle, lymphoid tissues, white blood cells and spleen. Predominantly expressed by cells of the epithelial lineage. Expressed at low level in normal liver. Expression significantly increases in virus (HBV, HCV) infected liver. Expression does not increase in liver disease due to non-viral causes (alcohol-induced liver disease, autoimmune hepatitis) Increased expression in hepatocytes appears to be a general feature of advanced liver disease. In liver tissue from patients with adult giant- cell hepatitis (GCH), it is strongly expressed in hepatocytes-derived syncytial giant cells. Constitutively expressed by biliary epithelial cells but not by hepatocytes.

GOLPH2 Antibody (C-Term) - Protocols

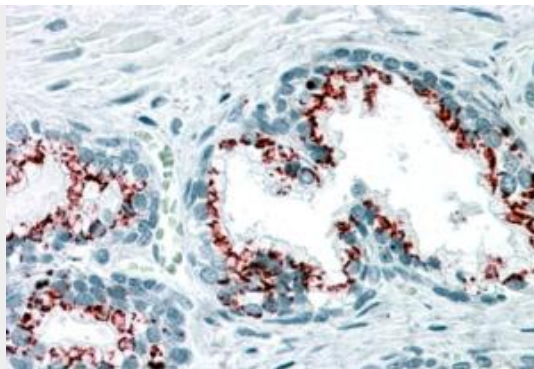
Provided below are standard protocols that you may find useful for product applications.

- [Western Blot](#)
- [Blocking Peptides](#)
- [Dot Blot](#)
- [Immunohistochemistry](#)
- [Immunofluorescence](#)
- [Immunoprecipitation](#)
- [Flow Cytometry](#)
- [Cell Culture](#)

GOLPH2 Antibody (C-Term) - Images



HEK293 lysate (10ug protein in RIPA buffer) overexpressing Human GOLM1 with C-terminal MYC tag probed with AF2285a (1ug/ml) in Lane A and probed with anti-MYC Tag (1/1000) in lane C. Mock-transfected HEK293 probed with AF2285a (1mg/ml) in Lane B. Primary incubations were for 1 hour. Detected by chemiluminescence.



AF2285a (3.8 µg/ml) staining of paraffin embedded Human Prostate. Steamed antigen retrieval with citrate buffer pH 6, AP-staining.

GOLPH2 Antibody (C-Term) - Background

Both variants (NP_057632.2; NP_808800.1) encode the same isoform

GOLPH2 Antibody (C-Term) - References

GP73, a novel Golgi-localized protein upregulated by viral infection. Kladney RD, Bulla GA, Guo L, Mason AL, Tollefson AE, Simon DJ, Koutoubi Z, Fimmel CJ. Gene. 2000 May 16;249(1-2):53-65. PMID: 10831838