

Cytochrome b reductase 1 Antibody (C-Term)
Peptide-affinity purified goat antibody
Catalog # AF2429a**Specification****Cytochrome b reductase 1 Antibody (C-Term) - Product Information**

| | |
|-------------------|---|
| Application | IHC |
| Primary Accession | Q53TN4 |
| Other Accession | NP_079119.3 , 79901 |
| Reactivity | Human, Mouse |
| Predicted | Pig, Dog, Cow |
| Host | Goat |
| Clonality | Polyclonal |
| Concentration | 0.5 mg/ml |
| Isotype | IgG |
| Calculated MW | 31641 |

Cytochrome b reductase 1 Antibody (C-Term) - Additional Information**Gene ID** 79901**Other Names**

Cytochrome b reductase 1, 1.-.-., Duodenal cytochrome b, Ferric-chelate reductase 3, CYBRD1, DCYTB, FRRS3

Format

0.5 mg/ml in Tris saline, 0.02% sodium azide, pH7.3 with 0.5% bovine serum albumin

Storage

Maintain refrigerated at 2-8°C for up to 6 months. For long term storage store at -20°C in small aliquots to prevent freeze-thaw cycles.

Precautions

Cytochrome b reductase 1 Antibody (C-Term) is for research use only and not for use in diagnostic or therapeutic procedures.

Cytochrome b reductase 1 Antibody (C-Term) - Protein Information**Name** CYBRD1 ([HGNC:20797](#))**Function**

Plasma membrane reductase that uses cytoplasmic ascorbate as an electron donor to reduce extracellular Fe(3+) into Fe(2+) (PubMed:30272000). Probably functions in dietary iron absorption at the brush border of duodenal enterocytes by producing Fe(2+), the divalent form of iron that can be transported into enterocytes (PubMed:30272000). It is also able to reduce extracellular monodehydro- L-ascorbate

and may be involved in extracellular ascorbate regeneration by erythrocytes in blood (PubMed:17068337). May also act as a ferrioreductase in airway epithelial cells (Probable). May also function as a cupric transmembrane reductase (By similarity).

Cellular Location

Cell membrane; Multi-pass membrane protein. Apical cell membrane; Multi-pass membrane protein. Note=Localized at the brush border of duodenal cells.

Tissue Location

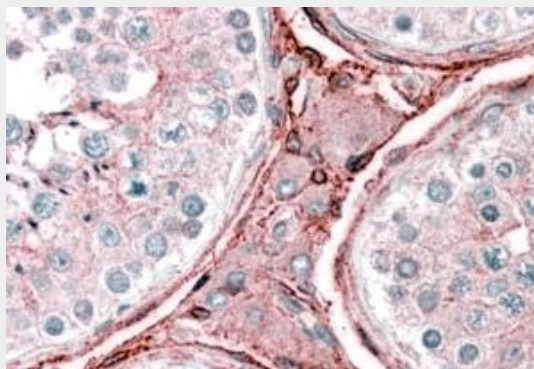
Present in erythrocyte membranes (at protein level). Also expressed in respiratory epithelium

Cytochrome b reductase 1 Antibody (C-Term) - Protocols

Provided below are standard protocols that you may find useful for product applications.

- [Western Blot](#)
- [Blocking Peptides](#)
- [Dot Blot](#)
- [Immunohistochemistry](#)
- [Immunofluorescence](#)
- [Immunoprecipitation](#)
- [Flow Cytometry](#)
- [Cell Culture](#)

Cytochrome b reductase 1 Antibody (C-Term) - Images



AF2429a (2.5 µg/ml) staining of paraffin embedded Human Testis. Steamed antigen retrieval with citrate buffer pH 6, AP-staining.

Cytochrome b reductase 1 Antibody (C-Term) - Background

This antibody is expected to recognise isoform 1 (NP_079119.3) only.

Cytochrome b reductase 1 Antibody (C-Term) - References

Duodenal ascorbate and ferric reductase in human iron deficiency. Atanasova BD, Li AC, Bjarnason I, Tzatchev KN, Simpson RJ. Am J Clin Nutr. 2005 Jan;81(1):130-3. PMID: 15640471