

**Psoriasin / S100A7 Antibody (internal region)**  
**Peptide-affinity purified goat antibody**  
**Catalog # AF2518a**

**Specification**

---

**Psoriasin / S100A7 Antibody (internal region) - Product Information**

Application	WB
Primary Accession	<a href="#">P31151</a>
Other Accession	<a href="#">NP_002954.1</a> , <a href="#">6278</a>
Reactivity	Human
Host	Goat
Clonality	Polyclonal
Concentration	0.5 mg/ml
Isotype	IgG
Calculated MW	11471

**Psoriasin / S100A7 Antibody (internal region) - Additional Information**

**Gene ID** 6278

**Other Names**

Protein S100-A7, Psoriasin, S100 calcium-binding protein A7, S100A7, PSOR1, S100A7C

**Format**

0.5 mg/ml in Tris saline, 0.02% sodium azide, pH7.3 with 0.5% bovine serum albumin

**Storage**

Maintain refrigerated at 2-8°C for up to 6 months. For long term storage store at -20°C in small aliquots to prevent freeze-thaw cycles.

**Precautions**

Psoriasin / S100A7 Antibody (internal region) is for research use only and not for use in diagnostic or therapeutic procedures.

**Psoriasin / S100A7 Antibody (internal region) - Protein Information**

**Name** S100A7

**Synonyms** PSOR1, S100A7C

**Cellular Location**

Cytoplasm. Secreted. Note=Secreted by a non-classical secretory pathway

**Tissue Location**

Fetal ear, skin, and tongue and human cell lines. Highly up-regulated in psoriatic epidermis. Also highly expressed in the urine of bladder squamous cell carcinoma (SCC) bearing patients

## Psoriasin / S100A7 Antibody (internal region) - Protocols

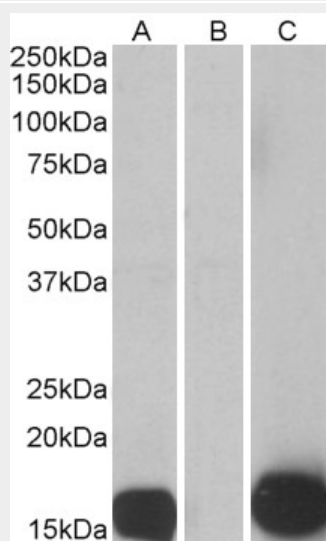
Provided below are standard protocols that you may find useful for product applications.

- [Western Blot](#)
- [Blocking Peptides](#)
- [Dot Blot](#)
- [Immunohistochemistry](#)
- [Immunofluorescence](#)
- [Immunoprecipitation](#)
- [Flow Cytometry](#)
- [Cell Culture](#)

## Psoriasin / S100A7 Antibody (internal region) - Images



AF2518a (0.1 µg/ml) staining of Human Skin lysate (35 µg protein in RIPA buffer). Primary incubation was 1 hour. Detected by chemiluminescence.



HEK293 lysate (10ug protein in RIPA buffer) overexpressing Human S100A7 with C-terminal MYC tag probed with AF2518a (0.5ug/ml) in Lane A and probed with anti-MYC Tag (1/1000) in lane C.

Mock-transfected HEK293 probed with AF2518a (1mg/ml) in Lane B. Primary incubations were for 1 hour. Detected by chemiluminescence.

#### **Psoriasin / S100A7 Antibody (internal region) - References**

Expression analysis of the mouse S100A7/psoriasin gene in skin inflammation and mammary tumorigenesis. Webb M, Emberley ED, Lizardo M, Alowami S, Qing G, Alfia'ar A, Snell-Curtis LJ, Niu Y, Civetta A, Myal Y, Shiu R, Murphy LC, Watson PH. BMC Cancer. 2005 Feb 17;5(1):17. PMID: 15717926