

PRRX1 Antibody (internal region)
Peptide-affinity purified goat antibody
Catalog # AF2652a

Specification

PRRX1 Antibody (internal region) - Product Information

Application	WB
Primary Accession	P54821
Other Accession	NP_008833.1 , NP_073207.1 , 5396
Reactivity	Human
Predicted	Mouse
Host	Goat
Clonality	Polyclonal
Concentration	0.5 mg/ml
Isotype	IgG
Calculated MW	27296

PRRX1 Antibody (internal region) - Additional Information

Gene ID 5396

Other Names

Paired mesoderm homeobox protein 1, Homeobox protein PHOX1, Paired-related homeobox protein 1, PRX-1, PRRX1, PMX1

Format

0.5 mg/ml in Tris saline, 0.02% sodium azide, pH7.3 with 0.5% bovine serum albumin

Storage

Maintain refrigerated at 2-8°C for up to 6 months. For long term storage store at -20°C in small aliquots to prevent freeze-thaw cycles.

Precautions

PRRX1 Antibody (internal region) is for research use only and not for use in diagnostic or therapeutic procedures.

PRRX1 Antibody (internal region) - Protein Information

Name PRRX1

Synonyms PMX1

Function

Master transcription factor of stromal fibroblasts for myofibroblastic lineage progression. Orchestrates the functional drift of fibroblasts into myofibroblastic phenotype via TGF-beta signaling by remodeling a super-enhancer landscape. Through this function, plays an essential role in wound healing process (PubMed:

target="_blank">35589735). Acts as a transcriptional regulator of muscle creatine kinase (MCK) and so has a role in the establishment of diverse mesodermal muscle types. The protein binds to an A/T-rich element in the muscle creatine enhancer (By similarity). May play a role in homeostasis and regeneration of bone, white adipose tissue and derm (By similarity).

Cellular Location

Nucleus {ECO:0000250|UniProtKB:P63013}.

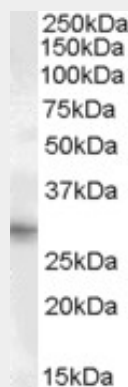
Tissue Location

[Isoform 1]: Widely expressed in embryonic and adult tissues, with highest levels in skeletal muscle. Isoform 1 is either expressed at similar or higher levels compared to isoform 2 in all embryonic tissues but skeletal muscle and heart. In adult tissues, expressed at lower levels compared to isoform 2

PRRX1 Antibody (internal region) - Protocols

Provided below are standard protocols that you may find useful for product applications.

- [Western Blot](#)
- [Blocking Peptides](#)
- [Dot Blot](#)
- [Immunohistochemistry](#)
- [Immunofluorescence](#)
- [Immunoprecipitation](#)
- [Flow Cytometry](#)
- [Cell Culture](#)

PRRX1 Antibody (internal region) - Images

AF1871a (1 µg/ml) staining of Human Heart lysate (35 µg protein in RIPA buffer). Primary incubation was 1 hour. Detected by chemiluminescence.

PRRX1 Antibody (internal region) - Background

This antibody is expected to recognise both reported isoforms (NP_008833.1; NP_073207.1);

PRRX1 Antibody (internal region) - References

Human prx1 gene is a target of Nrf2 and is up-regulated by hypoxia/reoxygenation: implication to tumor biology. Kim YJ, Ahn JY, Liang P, Ip C, Zhang Y, Park YM. Cancer Res. 2007 Jan 15;67(2):546-54. PMID: 17234762