

DIAPH1 Antibody (internal region)
Peptide-affinity purified goat antibody
Catalog # AF2854a**Specification**

DIAPH1 Antibody (internal region) - Product Information

Application	WB
Primary Accession	O60610
Other Accession	NP_005210.3 , NP_001073280.1 , 1729 , 13367 (mouse)
Reactivity	Mouse
Predicted	Human
Host	Goat
Clonality	Polyclonal
Concentration	0.5 mg/ml
Isotype	IgG
Calculated MW	141347

DIAPH1 Antibody (internal region) - Additional Information**Gene ID** 1729**Other Names**

Protein diaphanous homolog 1, Diaphanous-related formin-1, DRF1, DIAPH1, DIAP1

Format

0.5 mg/ml in Tris saline, 0.02% sodium azide, pH7.3 with 0.5% bovine serum albumin

Storage

Maintain refrigerated at 2-8°C for up to 6 months. For long term storage store at -20°C in small aliquots to prevent freeze-thaw cycles.

Precautions

DIAPH1 Antibody (internal region) is for research use only and not for use in diagnostic or therapeutic procedures.

DIAPH1 Antibody (internal region) - Protein Information**Name** DIAPH1**Synonyms** DIAP1**Function**

Actin nucleation and elongation factor required for the assembly of F-actin structures, such as actin cables and stress fibers (By similarity). Binds to the barbed end of the actin filament and slows down actin polymerization and depolymerization (By similarity). Required for cytokinesis, and transcriptional activation of the serum response factor (By similarity). DFR proteins couple Rho

and Src tyrosine kinase during signaling and the regulation of actin dynamics (By similarity). Functions as a scaffold protein for MAPRE1 and APC to stabilize microtubules and promote cell migration (By similarity). Has neurite outgrowth promoting activity. Acts in a Rho-dependent manner to recruit PFY1 to the membrane (By similarity). In hair cells, it may play a role in the regulation of actin polymerization in hair cells (PubMed: [20937854](http://www.uniprot.org/citations/20937854), PubMed: [21834987](http://www.uniprot.org/citations/21834987), PubMed: [26912466](http://www.uniprot.org/citations/26912466)). The MEMO1-RHOA- DIAPH1 signaling pathway plays an important role in ERBB2-dependent stabilization of microtubules at the cell cortex (PubMed: [20937854](http://www.uniprot.org/citations/20937854), PubMed: [21834987](http://www.uniprot.org/citations/21834987)). It controls the localization of APC and CLASP2 to the cell membrane, via the regulation of GSK3B activity (PubMed: [20937854](http://www.uniprot.org/citations/20937854), PubMed: [21834987](http://www.uniprot.org/citations/21834987)). In turn, membrane-bound APC allows the localization of the MACF1 to the cell membrane, which is required for microtubule capture and stabilization (PubMed: [20937854](http://www.uniprot.org/citations/20937854), PubMed: [21834987](http://www.uniprot.org/citations/21834987)). Plays a role in the regulation of cell morphology and cytoskeletal organization. Required in the control of cell shape (PubMed: [20937854](http://www.uniprot.org/citations/20937854), PubMed: [21834987](http://www.uniprot.org/citations/21834987)). Plays a role in brain development (PubMed: [24781755](http://www.uniprot.org/citations/24781755)). Also acts as an actin nucleation and elongation factor in the nucleus by promoting nuclear actin polymerization inside the nucleus to drive serum-dependent SRF-MRTFA activity (By similarity).

Cellular Location

Cell membrane {ECO:0000250|UniProtKB:O08808}. Cell projection, ruffle membrane {ECO:0000250|UniProtKB:O08808} Cytoplasm, cytoskeleton. Cytoplasm, cytoskeleton, microtubule organizing center, centrosome. Cytoplasm, cytoskeleton, spindle. Cytoplasm {ECO:0000250|UniProtKB:O08808}. Nucleus {ECO:0000250|UniProtKB:O08808} Note=Membrane ruffles, especially at the tip of ruffles, of motile cells. {ECO:0000250|UniProtKB:O08808}

Tissue Location

Expressed in brain, heart, placenta, lung, kidney, pancreas, liver, skeletal muscle and cochlea. Expressed in platelets (PubMed:26912466).

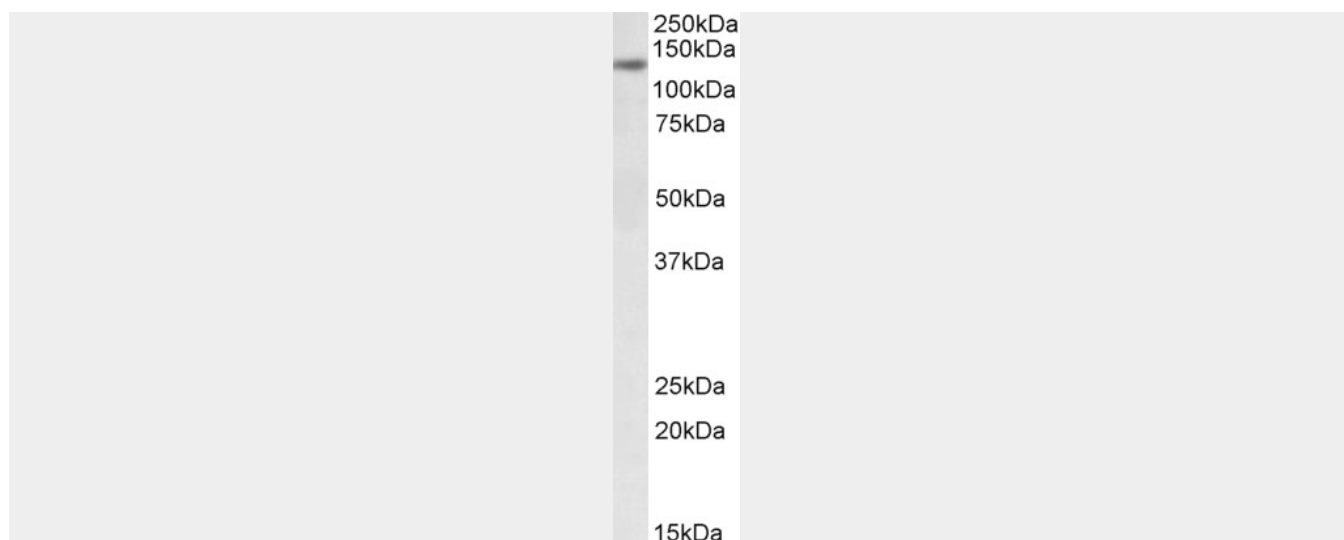
DIAPH1 Antibody (internal region) - Protocols

Provided below are standard protocols that you may find useful for product applications.

- [Western Blot](#)
- [Blocking Peptides](#)
- [Dot Blot](#)
- [Immunohistochemistry](#)
- [Immunofluorescence](#)
- [Immunoprecipitation](#)
- [Flow Cytometry](#)
- [Cell Culture](#)

DIAPH1 Antibody (internal region) - Images





AF2854a (0.3 µg/ml) staining of NIH3T3 lysate (35 µg protein in RIPA buffer). Primary incubation was 1 hour. Detected by chemiluminescence.

DIAPH1 Antibody (internal region) - Background

This antibody is expected to recognize both reported isoforms (NP_005210.3; NP_001073280.1).

DIAPH1 Antibody (internal region) - References

Biochemical characterization of the Rho GTPase-regulated actin assembly by diaphanous-related formins, mDia1 and Daam1, in platelets Higashi T, Ikeda T, Shirakawa R, Kondo H, Kawato M, Horiguchi M, Okuda T, Okawa K, Fukai S, Nureki O, Kita T, Horiuchi H J Biol Chem. 2008 Mar 28;283(13):8746-55 PMID: 18218625