

SPARTIN Antibody (internal region)
Peptide-affinity purified goat antibody
Catalog # AF2902a**Specification**

SPARTIN Antibody (internal region) - Product Information

Application	WB, IF
Primary Accession	Q8N0X7
Other Accession	NP_055902.1 , 23111
Reactivity	Human
Host	Goat
Clonality	Polyclonal
Concentration	0.5 mg/ml
Isotype	IgG
Calculated MW	72833

SPARTIN Antibody (internal region) - Additional Information**Gene ID** 23111**Other Names**

Spartin, Spastic paraplegia 20 protein, Trans-activated by hepatitis C virus core protein 1, SPG20, KIAA0610, TAHCCP1

Format

0.5 mg/ml in Tris saline, 0.02% sodium azide, pH7.3 with 0.5% bovine serum albumin

Storage

Maintain refrigerated at 2-8°C for up to 6 months. For long term storage store at -20°C in small aliquots to prevent freeze-thaw cycles.

Precautions

SPARTIN Antibody (internal region) is for research use only and not for use in diagnostic or therapeutic procedures.

SPARTIN Antibody (internal region) - Protein Information**Name** SPART ([HGNC:18514](#))**Function**

May be implicated in endosomal trafficking, or microtubule dynamics, or both. Participates in cytokinesis (PubMed:20719964).

Cellular Location

Cytoplasm. Midbody. Note=Transiently associated with endosomes (PubMed:19580544). Colocalized with IST1 to the ends of Flemming bodies during cytokinesis (PubMed:20719964)

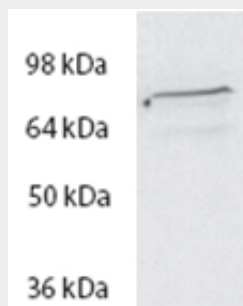
Tissue Location

Ubiquitously expressed, with highest levels of expression detected in adipose tissue

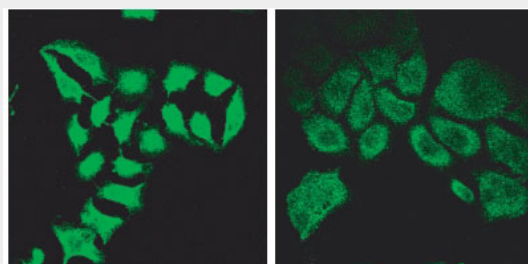
SPARTIN Antibody (internal region) - Protocols

Provided below are standard protocols that you may find useful for product applications.

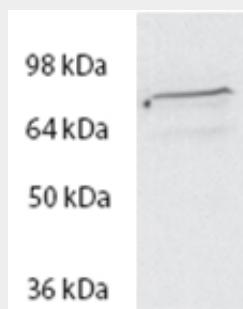
- [Western Blot](#)
- [Blocking Peptides](#)
- [Dot Blot](#)
- [Immunohistochemistry](#)
- [Immunofluorescence](#)
- [Immunoprecipitation](#)
- [Flow Cytometry](#)
- [Cell Culture](#)

SPARTIN Antibody (internal region) - Images

AF2902a (2 µg/ml) staining of HeLa lysate (35 µg protein in RIPA buffer). Primary incubation was 1 hour. Detected by chemiluminescence.

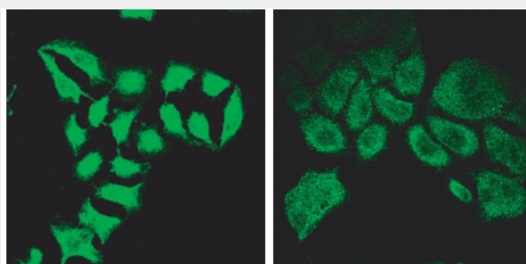


AF2902a (2 µg/ml) staining of methanol-fixed HeLa before (left) and after (right) introduction of siRNA.



EB09136 (2µg/ml) staining of HeLa lysate (35µg protein in RIPA buffer). Primary incubation was 1

hour. Detected by chemiluminescence.



EB09136 (2 μ g/ml) staining of methanol-fixed HeLa before (left) and after (right) introduction of siRNA.

SPARTIN Antibody (internal region) - References

The hereditary spastic paraplegia protein spartin localises to mitochondria Lu J, Rashid F, Byrne PC. J Neurochem. 2006 Sep;98(6):1908-19. PMID: 16945107