

**FRG1 Antibody (internal region)**  
**Peptide-affinity purified goat antibody**  
**Catalog # AF3162a****Specification**

---

**FRG1 Antibody (internal region) - Product Information**

Application	WB
Primary Accession	<a href="#">Q14331</a>
Other Accession	<a href="#">NP_004468.1</a> , <a href="#">2483</a> , <a href="#">14300 (mouse)</a> , <a href="#">361156 (rat)</a>
Reactivity	Human
Predicted	Mouse, Rat
Host	Goat
Clonality	Polyclonal
Concentration	0.5 mg/ml
Isotype	IgG
Calculated MW	29172

**FRG1 Antibody (internal region) - Additional Information****Gene ID** 2483**Other Names**

Protein FRG1, FSHD region gene 1 protein, FRG1

**Format**

0.5 mg/ml in Tris saline, 0.02% sodium azide, pH7.3 with 0.5% bovine serum albumin

**Storage**

Maintain refrigerated at 2-8°C for up to 6 months. For long term storage store at -20°C in small aliquots to prevent freeze-thaw cycles.

**Precautions**

FRG1 Antibody (internal region) is for research use only and not for use in diagnostic or therapeutic procedures.

**FRG1 Antibody (internal region) - Protein Information****Name** FRG1 ([HGNC:3954](#))**Function**

Binds to mRNA in a sequence-independent manner. May play a role in regulation of pre-mRNA splicing or in the assembly of rRNA into ribosomal subunits. May be involved in mRNA transport. May be involved in epigenetic regulation of muscle differentiation through regulation of activity of the histone-lysine N-methyltransferase KMT5B.

**Cellular Location**

Nucleus, Cajal body. Nucleus, nucleolus. Cytoplasm. Cytoplasm, myofibril, sarcomere, Z line. Note=Localization changes during myogenesis from mainly cytoplasmic in undifferentiated myoblasts, to strongly nucleolar in early myotubes and back to cytoplasmic 5 days post-differentiation (PubMed:20970242). Localized at the Z-line in the sarcomere of matured myotubes 8 days post-differentiation (PubMed:20970242).

#### **Tissue Location**

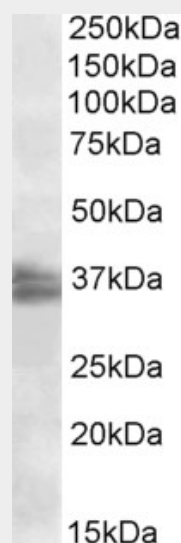
Expressed in adult muscle, lymphocytes, fetal brain, muscle, and placenta. Also expressed in the smooth muscle of arteries and veins, the sweat glands and the epidermis

#### **FRG1 Antibody (internal region) - Protocols**

Provided below are standard protocols that you may find useful for product applications.

- [Western Blot](#)
- [Blocking Peptides](#)
- [Dot Blot](#)
- [Immunohistochemistry](#)
- [Immunofluorescence](#)
- [Immunoprecipitation](#)
- [Flow Cytometry](#)
- [Cell Culture](#)

#### **FRG1 Antibody (internal region) - Images**



AF3162a (2 µg/ml) staining of Jurkat nuclear lysate (35 µg protein in RIPA buffer). Primary incubation was 1 hour. Detected by chemiluminescence.

#### **FRG1 Antibody (internal region) - References**

Muscular dystrophy candidate gene FRG1 is critical for muscle development. Hanel ML, Wuebbles RD, Jones PL, Developmental dynamics : an official publication of the American Association of Anatomists 2009 Jun 238 (6): 1502-12. PMID: 19097195