

PBX1 Antibody (internal region)
Peptide-affinity purified goat antibody
Catalog # AF3213a**Specification**

PBX1 Antibody (internal region) - Product Information

Application	WB
Primary Accession	P40424
Other Accession	NP_002576.1 , 5087 , 18514 (mouse)
Reactivity	Human, Mouse, Rat
Predicted	Dog
Host	Goat
Clonality	Polyclonal
Concentration	0.5 mg/ml
Isotype	IgG
Calculated MW	46626

PBX1 Antibody (internal region) - Additional Information**Gene ID** 5087**Other Names**

Pre-B-cell leukemia transcription factor 1, Homeobox protein PBX1, Homeobox protein PRL, PBX1, PRL

Format

0.5 mg/ml in Tris saline, 0.02% sodium azide, pH7.3 with 0.5% bovine serum albumin

Storage

Maintain refrigerated at 2-8°C for up to 6 months. For long term storage store at -20°C in small aliquots to prevent freeze-thaw cycles.

Precautions

PBX1 Antibody (internal region) is for research use only and not for use in diagnostic or therapeutic procedures.

PBX1 Antibody (internal region) - Protein Information**Name** PBX1**Synonyms** PRL**Function**

Transcription factor which binds the DNA sequence 5'- TGATTGAT-3' as part of a heterodimer with HOX proteins such as HOXA1, HOXA5, HOXB7 and HOXB8 (PubMed:9191052). Binds to the DNA sequence 5'- TGATTGAC-3' in complex with a nuclear factor which is not a class I HOX protein

(PubMed:9191052). Has also been shown to bind the DNA sequence 5'-ATCAATCAA-3' cooperatively with HOXA5, HOXB7, HOXB8, HOXC8 and HOXD4 (PubMed:8327485, PubMed:7791786). Acts as a transcriptional activator of PF4 in complex with MEIS1 (PubMed:12609849). Also activates transcription of SOX3 in complex with MEIS1 by binding to the 5'- TGATTGAC-3' consensus sequence (By similarity). In natural killer cells, binds to the NFIL3 promoter and acts as a transcriptional activator of NFIL3, promoting natural killer cell development (By similarity). Plays a role in the cAMP-dependent regulation of CYP17A1 gene expression via its cAMP-regulatory sequence (CRS1) (By similarity). Probably in complex with MEIS2, involved in transcriptional regulation by KLF4 (PubMed:21746878). Acts as a transcriptional activator of NKX2-5 and a transcriptional repressor of CDKN2B (By similarity). Together with NKX2-5, required for spleen development through a mechanism that involves CDKN2B repression (By similarity).

Cellular Location

Nucleus.

Tissue Location

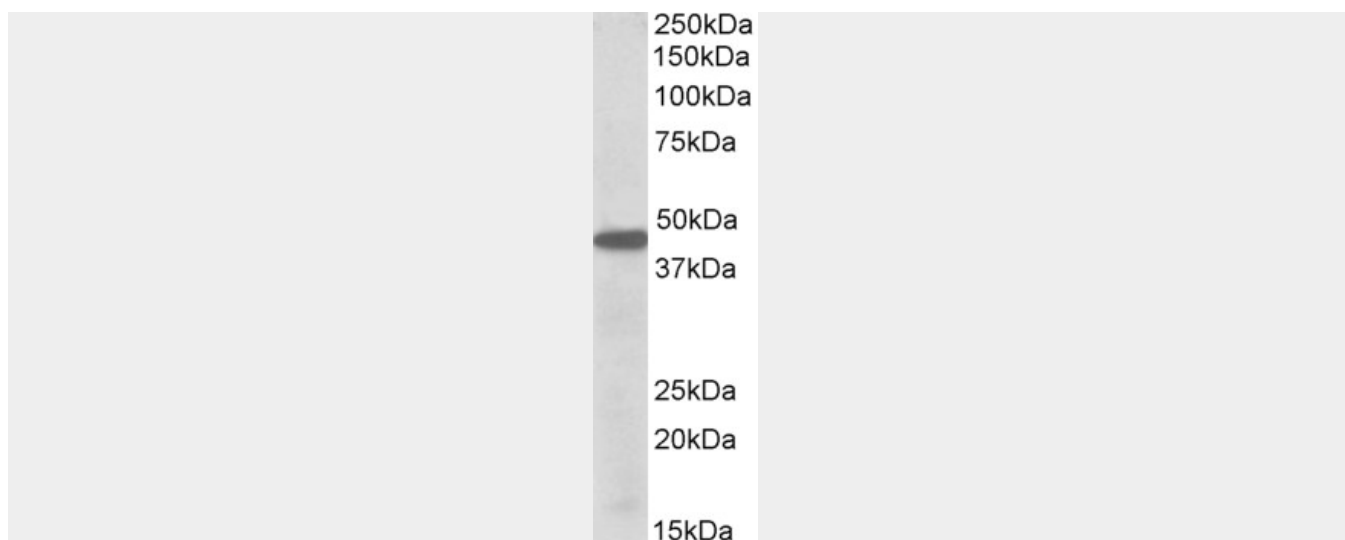
Expressed in the kidney. Expressed in the endothelial cells of the glomeruli and interstitium (at protein level) (PubMed:28270404). Expressed in all tissues except in cells of the B and T lineage. Expressed strongly in kidney and brain (PubMed:28270404).

PBX1 Antibody (internal region) - Protocols

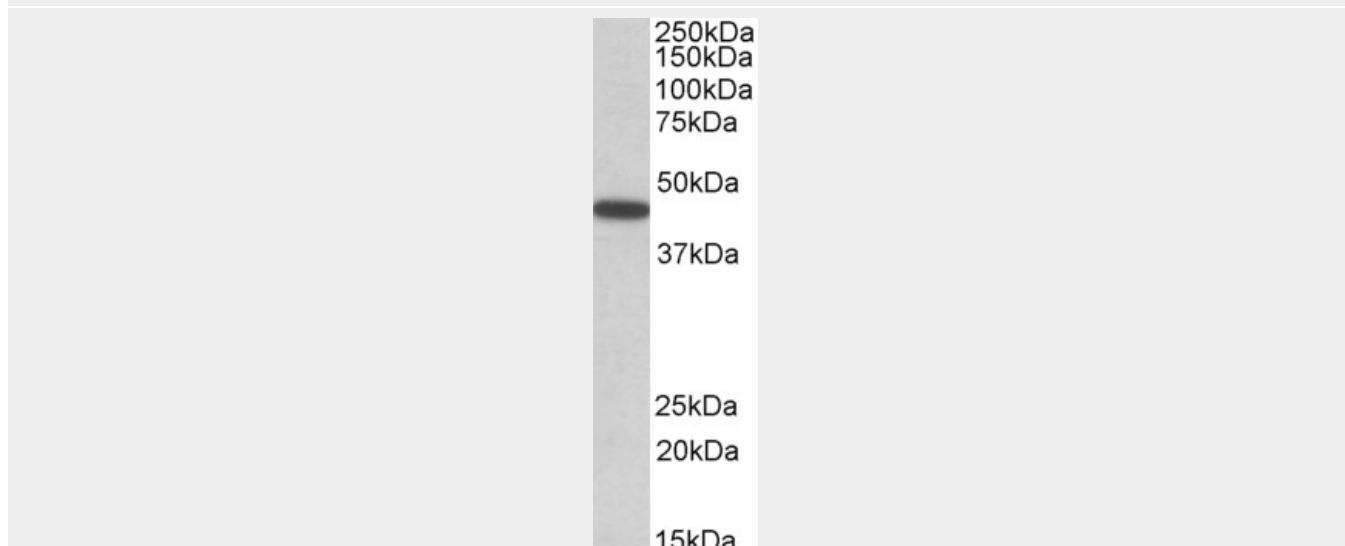
Provided below are standard protocols that you may find useful for product applications.

- [Western Blot](#)
- [Blocking Peptides](#)
- [Dot Blot](#)
- [Immunohistochemistry](#)
- [Immunofluorescence](#)
- [Immunoprecipitation](#)
- [Flow Cytometry](#)
- [Cell Culture](#)

PBX1 Antibody (internal region) - Images



AF3213a (0.5 µg/ml) staining of K562 lysate (35 µg protein in RIPA buffer). Primary incubation was 1 hour. Detected by chemiluminescence.



AF3213a (0.5 µg/ml) staining of Mouse Eye lysate (35 µg protein in RIPA buffer). Primary incubation was 1 hour. Detected by chemiluminescence.

PBX1 Antibody (internal region) - References

Gfi1 integrates progenitor versus granulocytic transcriptional programming. Horman SR, Velu CS, Chaubey A, Bourdeau T, Zhu J, Paul WE, Gebelein B, Grimes HL. Blood 2009 May 113 (22): 5466-75. PMID: 19346496