

POLDIP2 Antibody (internal region, near C-Term)
Peptide-affinity purified goat antibody
Catalog # AF3418a

Specification

POLDIP2 Antibody (internal region, near C-Term) - Product Information

Application	WB
Primary Accession	O9Y2S7
Other Accession	NP_056399.1 , 26073 , 67811 (mouse)
Reactivity	Rat
Predicted	Human, Mouse, Dog, Cow
Host	Goat
Clonality	Polyclonal
Concentration	0.5 mg/ml
Isotype	IgG
Calculated MW	42033

POLDIP2 Antibody (internal region, near C-Term) - Additional Information

Gene ID 26073

Other Names

Polymerase delta-interacting protein 2, 38 kDa DNA polymerase delta interaction protein, p38, POLDIP2, PDIP38, POLD4

Format

0.5 mg/ml in Tris saline, 0.02% sodium azide, pH7.3 with 0.5% bovine serum albumin

Storage

Maintain refrigerated at 2-8°C for up to 6 months. For long term storage store at -20°C in small aliquots to prevent freeze-thaw cycles.

Precautions

POLDIP2 Antibody (internal region, near C-Term) is for research use only and not for use in diagnostic or therapeutic procedures.

POLDIP2 Antibody (internal region, near C-Term) - Protein Information

Name POLDIP2 {ECO:0000303|PubMed:26984527, ECO:0000312|HGNC:HGNC:23781}

Function

Involved in DNA damage tolerance by regulating translesion synthesis (TLS) of templates carrying DNA damage lesions such as 8oxoG and abasic sites (PubMed:24191025). May act by stimulating activity of DNA polymerases involved in TLS, such as PRIMPOL and polymerase delta (POLD1) (PubMed:24191025, PubMed:26984527).

target="_blank">26984527).

Cellular Location

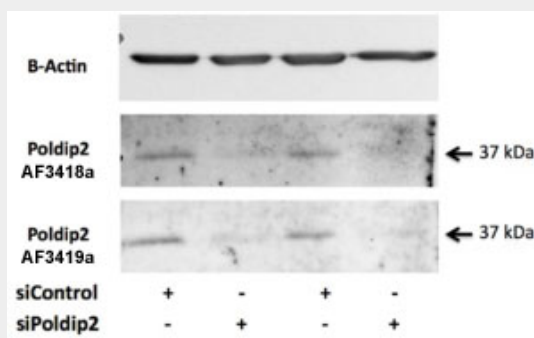
Mitochondrion matrix. Nucleus Note=Mainly localizes to the mitochondrial matrix; a small fraction localizes in the nucleus.

POLDIP2 Antibody (internal region, near C-Term) - Protocols

Provided below are standard protocols that you may find useful for product applications.

- [Western Blot](#)
- [Blocking Peptides](#)
- [Dot Blot](#)
- [Immunohistochemistry](#)
- [Immunofluorescence](#)
- [Immunoprecipitation](#)
- [Flow Cytometry](#)
- [Cell Culture](#)

POLDIP2 Antibody (internal region, near C-Term) - Images



AF3418a (0.5 µg/ml) staining of Rat VSMC lysate (35 µg protein in RIPA buffer). Primary incubation was overnight at 4°C. Detected by chemiluminescence. Data provided by Everest Grant winner Dr. B. Lassegue, Emory University, Atlanta, USA

POLDIP2 Antibody (internal region, near C-Term) - References

Complex sense-antisense architecture of TNFAIP1/POLDIP2 on 17q11.2 represents a novel transcriptional structural-functional gene module involved in breast cancer progression. Grinchuk OV, Motakis E, Kuznetsov VA, BMC genomics 2010 11 Suppl 1 : S9. PMID: 20158880