

SLC47A2 Antibody (internal region, near C-Term)
Peptide-affinity purified goat antibody
Catalog # AF3445a**Specification**

SLC47A2 Antibody (internal region, near C-Term) - Product Information

| | |
|-------------------|---|
| Application | WB |
| Primary Accession | Q86VL8 |
| Other Accession | NP_690872.2 , NP_001093116.1 , 146802 |
| Reactivity | Human |
| Host | Goat |
| Clonality | Polyclonal |
| Concentration | 0.5 mg/ml |
| Isotype | IgG |
| Calculated MW | 65085 |

SLC47A2 Antibody (internal region, near C-Term) - Additional Information**Gene ID** 146802**Other Names**

Multidrug and toxin extrusion protein 2, MATE-2, hMATE-2, Kidney-specific H(+)/organic cation antiporter, Solute carrier family 47 member 2, SLC47A2, MATE2

Format

0.5 mg/ml in Tris saline, 0.02% sodium azide, pH7.3 with 0.5% bovine serum albumin

Storage

Maintain refrigerated at 2-8°C for up to 6 months. For long term storage store at -20°C in small aliquots to prevent freeze-thaw cycles.

Precautions

SLC47A2 Antibody (internal region, near C-Term) is for research use only and not for use in diagnostic or therapeutic procedures.

SLC47A2 Antibody (internal region, near C-Term) - Protein Information**Name** SLC47A2 ([HGNC:26439](#))**Synonyms** MATE2**Function**

Multidrug efflux pump that functions as a H(+)/organic cation antiporter. Mediates the efflux of cationic compounds, such as the model cations, tetraethylammonium (TEA) and 1-methyl-4-phenylpyridinium (MPP+), the platinum-based drug oxaliplatin or weak bases that are positively charged at physiological pH, cimetidine, the platinum-based drugs cisplatin and oxaliplatin or the antidiabetic drug metformin. Mediates the efflux of endogenous compounds such

as, creatinine, thiamine and estrone-3-sulfate. Plays a physiological role in the excretion of drugs, toxins and endogenous metabolites through the kidney.

Cellular Location

Cell membrane; Multi-pass membrane protein. Apical cell membrane; Multi-pass membrane protein. Note=Detected in the renal urinary tubules.

Tissue Location

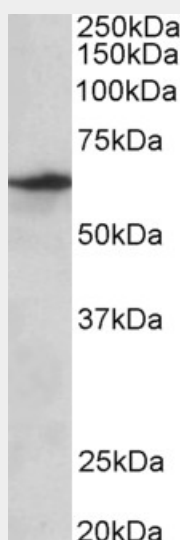
[Isoform 1]: High expression in kidney. Very small expression in adrenal gland and lung. [Isoform 6]: Ubiquitously expressed in all tissues examined except the kidney.

SLC47A2 Antibody (internal region, near C-Term) - Protocols

Provided below are standard protocols that you may find useful for product applications.

- [Western Blot](#)
- [Blocking Peptides](#)
- [Dot Blot](#)
- [Immunohistochemistry](#)
- [Immunofluorescence](#)
- [Immunoprecipitation](#)
- [Flow Cytometry](#)
- [Cell Culture](#)

SLC47A2 Antibody (internal region, near C-Term) - Images



AF3445a (0.3 µg/ml) staining of Human Testis lysate (35 µg protein in RIPA buffer). Primary incubation was 1 hour. Detected by chemiluminescence.

SLC47A2 Antibody (internal region, near C-Term) - Background

This antibody is expected to recognize both reported isoforms (NP_690872.2; NP_001093116.1).

SLC47A2 Antibody (internal region, near C-Term) - References

Functional characteristics of two human MATE transporters: kinetics of cimetidine transport and profiles of inhibition by various compounds. Ohta KY, Inoue K, Yasujima T, Ishimaru M, Yuasa H,

Journal of pharmacy & pharmaceutical sciences : a publication of the Canadian Society for
Pharmaceutical Sciences, Société canadienne des sciences pharmaceutiques 2009 12 (3):
388-96. PMID: 20067714