

**SETDB2 Antibody (C or N-Term)**  
**Peptide-affinity purified goat antibody**  
**Catalog # AF3505a****Specification**

---

**SETDB2 Antibody (C or N-Term) - Product Information**

Application	WB
Primary Accession	<a href="#">Q96T68</a>
Other Accession	<a href="#">NP_114121.2</a> , <a href="#">NP_001153780.1</a> , <a href="#">83852</a> , <a href="#">239122 (mouse)</a>
Reactivity	Human
Predicted	Mouse, Pig, Dog, Cow
Host	Goat
Clonality	Polyclonal
Concentration	0.5 mg/ml
Isotype	IgG
Calculated MW	81894

**SETDB2 Antibody (C or N-Term) - Additional Information****Gene ID** 83852**Other Names**

Histone-lysine N-methyltransferase SETDB2, 2.1.1.43, Chronic lymphocytic leukemia deletion region gene 8 protein, Lysine N-methyltransferase 1F, SET domain bifurcated 2, SETDB2, C13orf4, CLLD8, KMT1F

**Format**

0.5 mg/ml in Tris saline, 0.02% sodium azide, pH7.3 with 0.5% bovine serum albumin

**Storage**

Maintain refrigerated at 2-8°C for up to 6 months. For long term storage store at -20°C in small aliquots to prevent freeze-thaw cycles.

**Precautions**

SETDB2 Antibody (C or N-Term) is for research use only and not for use in diagnostic or therapeutic procedures.

**SETDB2 Antibody (C or N-Term) - Protein Information****Name** SETDB2**Synonyms** C13orf4, CLLD8, KMT1F**Function**

Histone methyltransferase involved in left-right axis specification in early development and mitosis. Specifically trimethylates 'Lys-9' of histone H3 (H3K9me3). H3K9me3 is a specific tag for

epigenetic transcriptional repression that recruits HP1 (CBX1, CBX3 and/or CBX5) proteins to methylated histones. Contributes to H3K9me3 in both the interspersed repetitive elements and centromere-associated repeats. Plays a role in chromosome condensation and segregation during mitosis.

**Cellular Location**

Nucleus. Chromosome

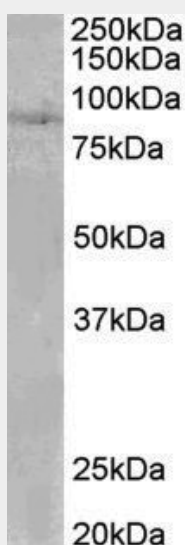
**Tissue Location**

Ubiquitous. Highest expression in heart, testis and ovary

**SETDB2 Antibody (C or N-Term) - Protocols**

Provided below are standard protocols that you may find useful for product applications.

- [Western Blot](#)
- [Blocking Peptides](#)
- [Dot Blot](#)
- [Immunohistochemistry](#)
- [Immunofluorescence](#)
- [Immunoprecipitation](#)
- [Flow Cytometry](#)
- [Cell Culture](#)

**SETDB2 Antibody (C or N-Term) - Images**

AF3505a (0.1 µg/ml) staining of Human Heart lysate (35 µg protein in RIPA buffer). Primary incubation was 1 hour. Detected by chemiluminescence.

**SETDB2 Antibody (C or N-Term) - Background**

This antibody is expected to recognize both reported isoforms (NP\_114121.2; NP\_001153780.1).

**SETDB2 Antibody (C or N-Term) - References**

CLLD8/KMT1F is a lysine methyltransferase that is important for chromosome segregation. Falandry C, Fourel G, Galy V, Ristriani T, Horard B, Bensimon E, Salles G, Gilson E, Magdinier F, The

Journal of biological chemistry 2010 Jun 285 (26): 20234-41. PMID: 20404330