

SPON2 (301-315) Antibody (internal region, near C-Term)
Peptide-affinity purified goat antibody
Catalog # AF3691a**Specification**

SPON2 (301-315) Antibody (internal region, near C-Term) - Product Information

Application	WB
Primary Accession	Q9BUD6
Other Accession	NP_036577.1 , 10417 , 100689 (mouse) , 171569 (rat)
Reactivity	Human
Predicted	Mouse, Rat, Dog
Host	Goat
Clonality	Polyclonal
Concentration	0.5 mg/ml
Isotype	IgG
Calculated MW	35788

SPON2 (301-315) Antibody (internal region, near C-Term) - Additional Information**Gene ID** 10417**Other Names**

Spondin-2, Differentially expressed in cancerous and non-cancerous lung cells 1, DIL-1, Mindin, SPON2, DIL1

Format

0.5 mg/ml in Tris saline, 0.02% sodium azide, pH7.3 with 0.5% bovine serum albumin

Storage

Maintain refrigerated at 2-8°C for up to 6 months. For long term storage store at -20°C in small aliquots to prevent freeze-thaw cycles.

Precautions

SPON2 (301-315) Antibody (internal region, near C-Term) is for research use only and not for use in diagnostic or therapeutic procedures.

SPON2 (301-315) Antibody (internal region, near C-Term) - Protein Information**Name** SPON2**Synonyms** DIL1**Function**

Cell adhesion protein that promotes adhesion and outgrowth of hippocampal embryonic neurons. Binds directly to bacteria and their components and functions as an opsonin for macrophage phagocytosis of bacteria. Essential in the initiation of the innate immune response and represents

a unique pattern-recognition molecule in the ECM for microbial pathogens (By similarity). Binds bacterial lipopolysaccharide (LPS).

Cellular Location

Secreted, extracellular space, extracellular matrix

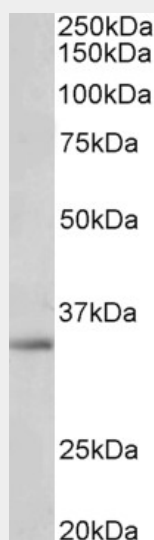
Tissue Location

Expressed in normal lung tissue but not in lung carcinoma cell lines.

SPON2 (301-315) Antibody (internal region, near C-Term) - Protocols

Provided below are standard protocols that you may find useful for product applications.

- [Western Blot](#)
- [Blocking Peptides](#)
- [Dot Blot](#)
- [Immunohistochemistry](#)
- [Immunofluorescence](#)
- [Immunoprecipitation](#)
- [Flow Cytometry](#)
- [Cell Culture](#)

SPON2 (301-315) Antibody (internal region, near C-Term) - Images

AF3691a (1 µg/ml) staining of A549 lysate (35 µg protein in RIPA buffer). Primary incubation was 1 hour. Detected by chemiluminescence.

SPON2 (301-315) Antibody (internal region, near C-Term) - Background

Reported variants represent identical protein: NP_036577.1, NP_001121797.1, NP_001185950.1

SPON2 (301-315) Antibody (internal region, near C-Term) - References

Positive regulation of spondin 2 by thyroid hormone is associated with cell migration and invasion. Liao CH, Yeh SC, Huang YH, Chen RN, Tsai MM, Chen WJ, Chi HC, Tai PJ, Liao CJ, Wu SM, Cheng WL, Pai LM, Lin KH. Endocr Relat Cancer. 2010 Jan 29;17(1):99-111. PMID: 19903741