

IRF4 Antibody (C-Term)
Peptide-affinity purified goat antibody
Catalog # AF3704a**Specification**

IRF4 Antibody (C-Term) - Product Information

Application	WB
Primary Accession	Q15306
Other Accession	NP_002451.2 , 3662
Reactivity	Human
Host	Goat
Clonality	Polyclonal
Concentration	0.5 mg/ml
Isotype	IgG
Calculated MW	51772

IRF4 Antibody (C-Term) - Additional Information**Gene ID** 3662**Other Names**

Interferon regulatory factor 4, IRF-4, Lymphocyte-specific interferon regulatory factor, LSIRF, Multiple myeloma oncogene 1, NF-EM5, IRF4, MUM1

Format

0.5 mg/ml in Tris saline, 0.02% sodium azide, pH7.3 with 0.5% bovine serum albumin

Storage

Maintain refrigerated at 2-8°C for up to 6 months. For long term storage store at -20°C in small aliquots to prevent freeze-thaw cycles.

Precautions

IRF4 Antibody (C-Term) is for research use only and not for use in diagnostic or therapeutic procedures.

IRF4 Antibody (C-Term) - Protein Information**Name** IRF4**Synonyms** MUM1**Function**

Transcriptional activator. Binds to the interferon-stimulated response element (ISRE) of the MHC class I promoter. Binds the immunoglobulin lambda light chain enhancer, together with PU.1. Probably plays a role in ISRE-targeted signal transduction mechanisms specific to lymphoid cells. Involved in CD8(+) dendritic cell differentiation by forming a complex with the BATF-JUNB heterodimer in immune cells, leading to recognition of AICE sequence (5'-TGAnTCA/GAAA- 3'), an

immune-specific regulatory element, followed by cooperative binding of BATF and IRF4 and activation of genes (By similarity).

Cellular Location

Nucleus.

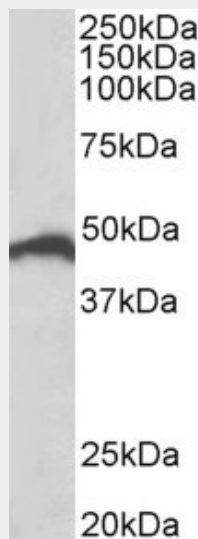
Tissue Location

Lymphoid cells.

IRF4 Antibody (C-Term) - Protocols

Provided below are standard protocols that you may find useful for product applications.

- [Western Blot](#)
- [Blocking Peptides](#)
- [Dot Blot](#)
- [Immunohistochemistry](#)
- [Immunofluorescence](#)
- [Immunoprecipitation](#)
- [Flow Cytometry](#)
- [Cell Culture](#)

IRF4 Antibody (C-Term) - Images

AF3704a (0.5 µg/ml) staining of Jurkat lysate (35 µg protein in RIPA buffer). Primary incubation was 1 hour. Detected by chemiluminescence.

IRF4 Antibody (C-Term) - References

C/EBPbeta regulates transcription factors critical for proliferation and survival of multiple myeloma cells. Pal R, Janz M, Galson DL, Gries M, Li S, Jähnig K, Anagnostopoulos I, Dörken B, Mapara MY, Borghesi L, Kardava L, Roodman GD, Milcarek C, Lentzsch S, Blood 2009 Oct 114 (18): 3890-8. PMID: 19717648