

PDCD4 Antibody (internal region)
Peptide-affinity purified goat antibody
Catalog # AF3789a

Specification

PDCD4 Antibody (internal region) - Product Information

Application	WB
Primary Accession	Q53EL6
Other Accession	NP_055271.2 , NP_663314.1 , NP_001186421.1 , 27250 , 18569 (mouse), 64031 (rat)
Reactivity	Human, Mouse
Predicted	Rat, Pig, Dog, Cow
Host	Goat
Clonality	Polyclonal
Concentration	0.5 mg/ml
Isotype	IgG
Calculated MW	51735

PDCD4 Antibody (internal region) - Additional Information

Gene ID 27250

Other Names

Programmed cell death protein 4, Neoplastic transformation inhibitor protein, Nuclear antigen H731-like, Protein 197/15a, PDCD4, H731

Format

0.5 mg/ml in Tris saline, 0.02% sodium azide, pH7.3 with 0.5% bovine serum albumin

Storage

Maintain refrigerated at 2-8°C for up to 6 months. For long term storage store at -20°C in small aliquots to prevent freeze-thaw cycles.

Precautions

PDCD4 Antibody (internal region) is for research use only and not for use in diagnostic or therapeutic procedures.

PDCD4 Antibody (internal region) - Protein Information

Name PDCD4

Synonyms H731

Function

Inhibits translation initiation and cap-dependent translation. May exert its function by hindering the interaction between EIF4A1 and EIF4G. Inhibits the helicase activity of EIF4A. Modulates the activation of JUN kinase. Down-regulates the expression of MAP4K1, thus inhibiting events

important in driving invasion, namely, MAPK85 activation and consequent JUN-dependent transcription. May play a role in apoptosis. Tumor suppressor. Inhibits tumor promoter-induced neoplastic transformation. Binds RNA (By similarity).

Cellular Location

Nucleus {ECO:0000250|UniProtKB:Q61823}. Cytoplasm {ECO:0000250|UniProtKB:Q61823}. Note=Shuttles between the nucleus and cytoplasm (By similarity). Predominantly nuclear under normal growth conditions, and when phosphorylated at Ser-457 (PubMed:16357133)

Tissue Location

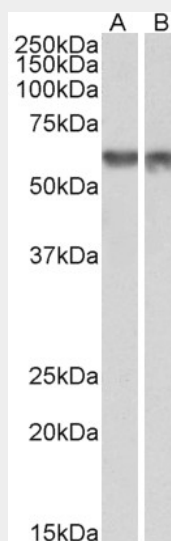
Up-regulated in proliferative cells. Highly expressed in epithelial cells of the mammary gland. Reduced expression in lung cancer and colon carcinoma.

PDCD4 Antibody (internal region) - Protocols

Provided below are standard protocols that you may find useful for product applications.

- [Western Blot](#)
- [Blocking Peptides](#)
- [Dot Blot](#)
- [Immunohistochemistry](#)
- [Immunofluorescence](#)
- [Immunoprecipitation](#)
- [Flow Cytometry](#)
- [Cell Culture](#)

PDCD4 Antibody (internal region) - Images



AF3789a (1 µg/ml) staining of nuclear NIH3T3 (A) and nuclear HeLa (B) lysates (35 µg protein in RIPA buffer). Primary incubation was 1 hour. Detected by chemiluminescence.

PDCD4 Antibody (internal region) - Background

This antibody is expected to recognize all reported isoforms (NP_055271.2; NP_663314.1; NP_001186421.1).

PDCD4 Antibody (internal region) - References

Programmed cell death 4 enhances chemosensitivity of ovarian cancer cells by activating death receptor pathway in vitro and in vivo. Zhang X, Wang X, Song X, Liu C, Shi Y, Wang Y, Afonja O, Ma C, Chen YH, Zhang L. Cancer Sci. 2010 Oct;101(10):2163-70. PMID: 20735432