

**Uromodulin Antibody (C-Term)**  
**Peptide-affinity purified goat antibody**  
**Catalog # AF3815a****Specification**

---

**Uromodulin Antibody (C-Term) - Product Information**

Application	WB
Primary Accession	<a href="#">P07911</a>
Other Accession	<a href="#">NP_003352.2</a> , <a href="#">7369</a>
Reactivity	Human
Host	Goat
Clonality	Polyclonal
Concentration	0.5 mg/ml
Isotype	IgG
Calculated MW	69761

**Uromodulin Antibody (C-Term) - Additional Information****Gene ID** 7369**Other Names**

Uromodulin, Tamm-Horsfall urinary glycoprotein, THP, Uromodulin, secreted form, UMOD

**Format**

0.5 mg/ml in Tris saline, 0.02% sodium azide, pH7.3 with 0.5% bovine serum albumin

**Storage**

Maintain refrigerated at 2-8°C for up to 6 months. For long term storage store at -20°C in small aliquots to prevent freeze-thaw cycles.

**Precautions**

Uromodulin Antibody (C-Term) is for research use only and not for use in diagnostic or therapeutic procedures.

**Uromodulin Antibody (C-Term) - Protein Information****Name** UMOD**Function**

[Uromodulin]: Functions in biogenesis and organization of the apical membrane of epithelial cells of the thick ascending limb of Henle's loop (TALH), where it promotes formation of complex filamentous gel-like structure that may play a role in the water barrier permeability (Probable). May serve as a receptor for binding and endocytosis of cytokines (IL-1, IL-2) and TNF (PubMed:<a href="http://www.uniprot.org/citations/3498215" target="\_blank">3498215</a>). Facilitates neutrophil migration across renal epithelia (PubMed:<a href="http://www.uniprot.org/citations/20798515" target="\_blank">20798515</a>).

**Cellular Location**

Apical cell membrane; Lipid-anchor, GPI-anchor. Basolateral cell membrane; Lipid-anchor, GPI-anchor. Cell projection, cilium membrane. Note=Only a small fraction sorts to the basolateral pole of tubular epithelial cells compared to apical localization (PubMed:22776760). Secreted into urine after cleavage (PubMed:18375198, PubMed:26811476). Colocalizes with NPHP1 and KIF3A (PubMed:20172860).

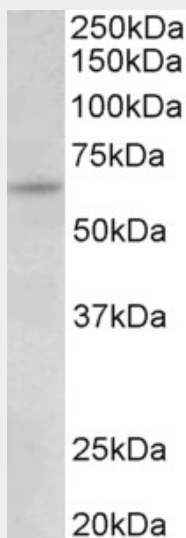
**Tissue Location**

Expressed in the tubular cells of the kidney. Most abundant protein in normal urine (at protein level). Synthesized exclusively in the kidney. Expressed exclusively by epithelial cells of the thick ascending limb of Henle's loop (TALH) and of distal convoluted tubule lumen.

**Uromodulin Antibody (C-Term) - Protocols**

Provided below are standard protocols that you may find useful for product applications.

- [Western Blot](#)
- [Blocking Peptides](#)
- [Dot Blot](#)
- [Immunohistochemistry](#)
- [Immunofluorescence](#)
- [Immunoprecipitation](#)
- [Flow Cytometry](#)
- [Cell Culture](#)

**Uromodulin Antibody (C-Term) - Images**

AF3815a (0.03 µg/ml) staining of HeLa lysate (35 µg protein in RIPA buffer). Primary incubation was 1 hour. Detected by chemiluminescence.

**Uromodulin Antibody (C-Term) - Background**

Reported variants represent identical protein: NP\_001008390.1, NP\_003352.2; The immunizing peptide represents the C terminus of the mature protein.

**Uromodulin Antibody (C-Term) - References**

Uromodulin gene variant is associated with type 2 diabetic nephropathy. Ahluwalia TS, Lindholm E, Groop L, Melander O. J Hypertens. 2011 Sep;29(9):1731-4. PMID: 21738052