

FGF13 (isoform 1) Antibody (internal region)
Peptide-affinity purified goat antibody
Catalog # AF3890a**Specification**

FGF13 (isoform 1) Antibody (internal region) - Product Information

Application	WB
Primary Accession	O92913
Other Accession	NP_004105.1 , 2258 , 14168 (mouse)
Reactivity	Mouse
Predicted	Human, Pig, Dog, Cow
Host	Goat
Clonality	Polyclonal
Concentration	0.5 mg/ml
Isotype	IgG
Calculated MW	27564

FGF13 (isoform 1) Antibody (internal region) - Additional Information**Gene ID** 2258**Other Names**

Fibroblast growth factor 13, FGF-13, Fibroblast growth factor homologous factor 2, FHF-2, FGF13, FHF2

Format

0.5 mg/ml in Tris saline, 0.02% sodium azide, pH7.3 with 0.5% bovine serum albumin

Storage

Maintain refrigerated at 2-8°C for up to 6 months. For long term storage store at -20°C in small aliquots to prevent freeze-thaw cycles.

Precautions

FGF13 (isoform 1) Antibody (internal region) is for research use only and not for use in diagnostic or therapeutic procedures.

FGF13 (isoform 1) Antibody (internal region) - Protein Information**Name** FGF13 ([HGNC:3670](#))**Synonyms** FHF2**Function**

Microtubule-binding protein which directly binds tubulin and is involved in both polymerization and stabilization of microtubules (By similarity). Through its action on microtubules, may participate in the refinement of axons by negatively regulating axonal and leading processes branching (By similarity). Plays a crucial role in neuron polarization and migration in the cerebral cortex and the

hippocampus (By similarity). Regulates voltage-gated sodium channel transport and function (PubMed:15282281, PubMed:33245860, PubMed:36696443). May also play a role in MAPK signaling (By similarity). Required for the development of axonal initial segment-targeting inhibitory GABAergic synapses made by chandelier neurons (By similarity).

Cellular Location

[Isoform 1]: Nucleus [Isoform 3]: Cytoplasm. Nucleus [Isoform 5]: Cytoplasm {ECO:0000250|UniProtKB:P61329}. Nucleus {ECO:0000250|UniProtKB:P61329}

Tissue Location

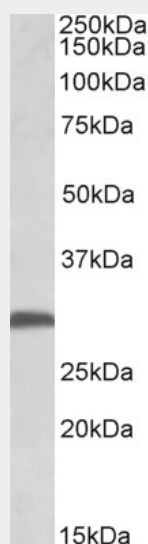
Ubiquitously expressed. Predominantly expressed in the nervous system.

FGF13 (isoform 1) Antibody (internal region) - Protocols

Provided below are standard protocols that you may find useful for product applications.

- [Western Blot](#)
- [Blocking Peptides](#)
- [Dot Blot](#)
- [Immunohistochemistry](#)
- [Immunofluorescence](#)
- [Immunoprecipitation](#)
- [Flow Cytometry](#)
- [Cell Culture](#)

FGF13 (isoform 1) Antibody (internal region) - Images



AF3890a (0.5 µg/ml) staining of Mouse Brain lysate (35 µg protein in RIPA buffer). Primary incubation was 1 hour. Detected by chemiluminescence.

FGF13 (isoform 1) Antibody (internal region) - Background

This antibody is expected to recognize isoform 1 (NP_004105.1) only. Reported variants represent identical protein: NP_001132974.1, NP_001132973.1

FGF13 (isoform 1) Antibody (internal region) - References

Fibroblast growth factor homologous factor 2B: association with Nav1.6 and selective colocalization at nodes of Ranvier of dorsal root axons. Wittmack EK, Rush AM, Craner MJ, Goldfarb M, Waxman SG, Dib-Hajj SD. J Neurosci. 2004 Jul 28;24(30):6765-75. PMID: 15282281