

**VCAM1 Antibody (internal region)**  
**Peptide-affinity purified goat antibody**  
**Catalog # AF3965a****Specification**

---

**VCAM1 Antibody (internal region) - Product Information**

Application	WB
Primary Accession	<a href="#">P19320</a>
Other Accession	<a href="#">NP_001069.1</a> , <a href="#">NP_001186763.1</a> , <a href="#">7412</a>
Reactivity	Human
Host	Goat
Clonality	Polyclonal
Concentration	0.5 mg/ml
Isotype	IgG
Calculated MW	81276

**VCAM1 Antibody (internal region) - Additional Information****Gene ID** 7412**Other Names**

Vascular cell adhesion protein 1, V-CAM 1, VCAM-1, INCAM-100, CD106, VCAM1, L1CAM

**Format**

0.5 mg/ml in Tris saline, 0.02% sodium azide, pH7.3 with 0.5% bovine serum albumin

**Storage**

Maintain refrigerated at 2-8°C for up to 6 months. For long term storage store at -20°C in small aliquots to prevent freeze-thaw cycles.

**Precautions**

VCAM1 Antibody (internal region) is for research use only and not for use in diagnostic or therapeutic procedures.

**VCAM1 Antibody (internal region) - Protein Information****Name** VCAM1**Function**

Cell adhesion glycoprotein predominantly expressed on the surface of endothelial cells that plays an important role in immune surveillance and inflammation (PubMed:<a href="http://www.uniprot.org/citations/31310649" target="\_blank">31310649</a>). Acts as a major regulator of leukocyte adhesion to the endothelium through interaction with different types of integrins (PubMed:<a href="http://www.uniprot.org/citations/10209034" target="\_blank">10209034</a>). During inflammatory responses, binds ligands on the surface of activated endothelial cells to initiate the activation of calcium channels and the plasma membrane-associated small GTPase RAC1 leading to leukocyte transendothelial migration

(PubMed:<a href="http://www.uniprot.org/citations/22970700" target="\_blank">22970700</a>). Serves also as a quality- control checkpoint for entry into bone marrow by providing a 'don't-eat-me' stamping in the context of major histocompatibility complex (MHC) class-I presentation (PubMed:<a href="http://www.uniprot.org/citations/35210567" target="\_blank">35210567</a>).

#### Cellular Location

[Vascular cell adhesion protein 1]: Cell membrane; Single-pass type I membrane protein

#### Tissue Location

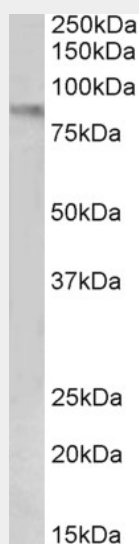
Expressed on inflamed vascular endothelium, as well as on macrophage-like and dendritic cell types in both normal and inflamed tissue

### VCAM1 Antibody (internal region) - Protocols

Provided below are standard protocols that you may find useful for product applications.

- [Western Blot](#)
- [Blocking Peptides](#)
- [Dot Blot](#)
- [Immunohistochemistry](#)
- [Immunofluorescence](#)
- [Immunoprecipitation](#)
- [Flow Cytometry](#)
- [Cell Culture](#)

### VCAM1 Antibody (internal region) - Images



AF3965a (1 µg/ml) staining of Human Uterus lysate (35 µg protein in RIPA buffer). Primary incubation was 1 hour. Detected by chemiluminescence.

### VCAM1 Antibody (internal region) - Background

This antibody is expected to recognize isoform a (NP\_001069.1) and isoform c (NP\_001186763.1).

### VCAM1 Antibody (internal region) - References

VCAM-1 promotes osteolytic expansion of indolent bone micrometastasis of breast cancer by

engaging  $\tau$ -positive osteoclast progenitors. Lu X, Mu E, Wei Y, Riethdorf S, Yang Q, Yuan M, Yan J, Hua Y, Tiede BJ, Lu X, Haffty BG, Pantel K, Massagué J, Kang Y. Cancer Cell. 2011 Dec 13;20(6):701-14. PMID: 22137794