

**Cone-rod homeobox (C Terminus) Antibody (internal region, near C-Term)**  
**Peptide-affinity purified goat antibody**  
**Catalog # AF4011a**

**Specification**

---

**Cone-rod homeobox (C Terminus) Antibody (internal region, near C-Term) - Product Information**

|                   |  |
|-------------------|--|
| Application       | WB   |
| Primary Accession | <a href="#">O43186</a>   |
| Other Accession   | <a href="#">NP_000545.1</a> , <a href="#">1406</a> , <a href="#">12951 (mouse)</a> , <a href="#">60446 (rat)</a> |
| Reactivity        | Rat  |
| Predicted         | Human, Mouse, Pig, Cow   |
| Host              | Goat   |
| Clonality         | Polyclonal   |
| Concentration     | 0.5 mg/ml  |
| Isotype           | IgG  |
| Calculated MW     | 32261  |

**Cone-rod homeobox (C Terminus) Antibody (internal region, near C-Term) - Additional Information**

**Gene ID** 1406

**Other Names**

Cone-rod homeobox protein, CRX, CORD2

**Format**

0.5 mg/ml in Tris saline, 0.02% sodium azide, pH7.3 with 0.5% bovine serum albumin

**Storage**

Maintain refrigerated at 2-8°C for up to 6 months. For long term storage store at -20°C in small aliquots to prevent freeze-thaw cycles.

**Precautions**

Cone-rod homeobox (C Terminus) Antibody (internal region, near C-Term) is for research use only and not for use in diagnostic or therapeutic procedures.

**Cone-rod homeobox (C Terminus) Antibody (internal region, near C-Term) - Protein Information**

**Name** CRX

**Synonyms** CORD2

**Function**

Transcription factor that binds and transactivates the sequence 5'-TAATC[CA]-3' which is found

upstream of several photoreceptor-specific genes, including the opsin genes. Acts synergistically with other transcription factors, such as NRL, RORB and RAX, to regulate photoreceptor cell-specific gene transcription. Essential for the maintenance of mammalian photoreceptors.

**Cellular Location**

Nucleus {ECO:0000255|PROSITE-ProRule:PRU00108}.

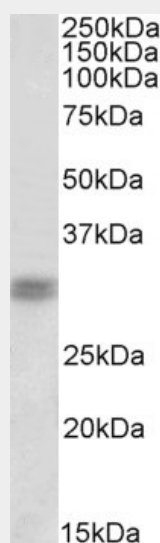
**Tissue Location**

Retina.

**Cone-rod homeobox (C Terminus) Antibody (internal region, near C-Term) - Protocols**

Provided below are standard protocols that you may find useful for product applications.

- [Western Blot](#)
- [Blocking Peptides](#)
- [Dot Blot](#)
- [Immunohistochemistry](#)
- [Immunofluorescence](#)
- [Immunoprecipitation](#)
- [Flow Cytometry](#)
- [Cell Culture](#)

**Cone-rod homeobox (C Terminus) Antibody (internal region, near C-Term) - Images**

AF4011a (1 µg/ml) staining of Rat Retina lysate (35 µg protein in RIPA buffer). Primary incubation was 1 hour. Detected by chemiluminescence.

**Cone-rod homeobox (C Terminus) Antibody (internal region, near C-Term) - References**

Immunohistochemical expression of CRX in extracranial malignant small round cell tumors. Terry J, Calicchio ML, Rodriguez-Galindo C, Perez-Atayde AR. The American journal of surgical pathology 2012 Aug 36 (8): 1165-9. PMID: 22790857