

**fibrinogen beta chain Antibody (internal region)**  
**Peptide-affinity purified goat antibody**  
**Catalog # AF4080a****Specification**

---

**fibrinogen beta chain Antibody (internal region) - Product Information**

Application	WB
Primary Accession	<a href="#">P02675</a>
Other Accession	<a href="#">NP_005132.2</a> , <a href="#">NP_001171670.1</a> , <a href="#">2244</a>
Reactivity	Human
Predicted	Dog
Host	Goat
Clonality	Polyclonal
Concentration	0.5 mg/ml
Isotype	IgG
Calculated MW	55928

**fibrinogen beta chain Antibody (internal region) - Additional Information****Gene ID** 2244**Other Names**

Fibrinogen beta chain, Fibrinopeptide B, Fibrinogen beta chain, FGB

**Format**

0.5 mg/ml in Tris saline, 0.02% sodium azide, pH7.3 with 0.5% bovine serum albumin

**Storage**

Maintain refrigerated at 2-8°C for up to 6 months. For long term storage store at -20°C in small aliquots to prevent freeze-thaw cycles.

**Precautions**

fibrinogen beta chain Antibody (internal region) is for research use only and not for use in diagnostic or therapeutic procedures.

**fibrinogen beta chain Antibody (internal region) - Protein Information****Name** FGB**Function**

Cleaved by the protease thrombin to yield monomers which, together with fibrinogen alpha (FGA) and fibrinogen gamma (FGG), polymerize to form an insoluble fibrin matrix. Fibrin has a major function in hemostasis as one of the primary components of blood clots. In addition, functions during the early stages of wound repair to stabilize the lesion and guide cell migration during re-epithelialization. Was originally thought to be essential for platelet aggregation, based on in vitro studies using anticoagulated blood. However subsequent studies have shown that it is not absolutely required for thrombus formation in vivo. Enhances expression of SELP in activated

platelets. Maternal fibrinogen is essential for successful pregnancy. Fibrin deposition is also associated with infection, where it protects against IFNG-mediated hemorrhage. May also facilitate the antibacterial immune response via both innate and T-cell mediated pathways.

**Cellular Location**

Secreted

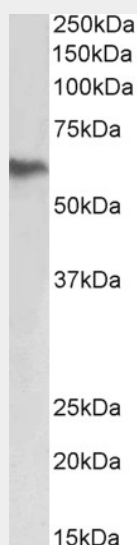
**Tissue Location**

Detected in blood plasma (at protein level).

**fibrinogen beta chain Antibody (internal region) - Protocols**

Provided below are standard protocols that you may find useful for product applications.

- [Western Blot](#)
- [Blocking Peptides](#)
- [Dot Blot](#)
- [Immunohistochemistry](#)
- [Immunofluorescence](#)
- [Immunoprecipitation](#)
- [Flow Cytometry](#)
- [Cell Culture](#)

**fibrinogen beta chain Antibody (internal region) - Images**

AF4080a (0.3 µg/ml) staining of Human Liver lysate (35 µg protein in RIPA buffer). Primary incubation was 1 hour. Detected by chemiluminescence.

**fibrinogen beta chain Antibody (internal region) - Background**

This antibody is expected to recognize both reported isoforms (NP\_005132.2; NP\_001171670.1).

**fibrinogen beta chain Antibody (internal region) - References**

Fibrinogen beta-chain tyrosine nitration is a prothrombotic risk factor. Parastatidis I, Thomson L, Burke A, Chernysh I, Nagaswami C, Visser J, Stamer S, Liebler DC, Koliakos G, Heijnen HF, Fitzgerald GA, Weisel JW, Ischiropoulos H. The Journal of biological chemistry 2008 Dec 283 (49): 33846-53.

PMID: 18818200