

Goat Anti-G-CSF receptor / CSF3R Antibody (internal region)
Purified Goat Polyclonal Antibody
Catalog # AF4245a**Specification**

Goat Anti-G-CSF receptor / CSF3R Antibody (internal region) - Product Information

Application	WB
Primary Accession	Q99062
Other Accession	NP_000751.1 , NP_724781.1 , NP_758519.1
Reactivity	Human
Predicted	Human, Cow
Host	Goat
Clonality	Polyclonal
Concentration	0.5
Calculated MW	92156

Goat Anti-G-CSF receptor / CSF3R Antibody (internal region) - Additional Information**Gene ID** 1441**Other Names**

CSF3R; colony stimulating factor 3 receptor (granulocyte); CD114; GCSFR; CD114 antigen; G-CSF receptor; G-CSF-R; OTTHUMP00000009703; OTTHUMP00000009704; OTTHUMP00000009705; granulocyte colony-stimulating factor receptor

Format

Supplied at 0.5 mg/ml in Tris saline, 0.02% sodium azide, pH7.3 with 0.5% bovine serum albumin. Aliquot and store at -20°C. Minimize freezing and thawing.

Immunogen

Peptide with sequence C-PPELGKSPLTHYT, from the internal region of the protein sequence according to [NP_000751.1](#); [NP_724781.1](#); [NP_758519.1](#).

Storage

Maintain refrigerated at 2-8°C for up to 6 months. For long term storage store at -20°C in small aliquots to prevent freeze-thaw cycles.

Precautions

Goat Anti-G-CSF receptor / CSF3R Antibody (internal region) is for research use only and not for use in diagnostic or therapeutic procedures.

Goat Anti-G-CSF receptor / CSF3R Antibody (internal region) - Protein Information**Name** CSF3R**Synonyms** GCSFR

Function

Receptor for granulocyte colony-stimulating factor (CSF3), essential for granulocytic maturation. Plays a crucial role in the proliferation, differentiation and survival of cells along the neutrophilic lineage. In addition it may function in some adhesion or recognition events at the cell surface.

Cellular Location

[Isoform 2]: Secreted.

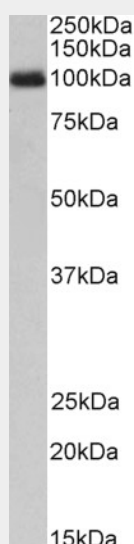
Tissue Location

One or several isoforms have been found in myelogenous leukemia cell line KG-1, leukemia U-937 cell line, in bone marrow cells, placenta, and peripheral blood granulocytes. Isoform GCSFR-2 is found only in leukemia U-937 cells. Isoform GCSFR-3 is highly expressed in placenta

Goat Anti-G-CSF receptor / CSF3R Antibody (internal region) - Protocols

Provided below are standard protocols that you may find useful for product applications.

- [Western Blot](#)
- [Blocking Peptides](#)
- [Dot Blot](#)
- [Immunohistochemistry](#)
- [Immunofluorescence](#)
- [Immunoprecipitation](#)
- [Flow Cytometry](#)
- [Cell Culture](#)

Goat Anti-G-CSF receptor / CSF3R Antibody (internal region) - Images

AF4245a (1 µg/ml) staining of Peripheral Blood Lymphocytes lysate (35 µg protein in RIPA buffer). Primary incubation was 1 hour. Detected by chemiluminescence.

Goat Anti-G-CSF receptor / CSF3R Antibody (internal region) - References

The deubiquitinating enzyme DUB2A enhances CSF3 signalling by attenuating lysosomal routing of the CSF3 receptor. Meenhuis A, Verwijmeren C, Roovers O, Touw IP. Biochem J. 2011 Mar 1;434(2):343-51.