

Goat Anti-GNAI2 Antibody (internal region)
Purified Goat Polyclonal Antibody
Catalog # AF4248a**Specification**

Goat Anti-GNAI2 Antibody (internal region) - Product Information

Application	WB
Primary Accession	P04899
Other Accession	14678(mouse) , 81664(rat) , NP_002061.1 , NP_001159897.1
Reactivity	Human
Predicted	Human, Mouse, Rat, Pig, Cow
Host	Goat
Clonality	Polyclonal
Concentration	0.5
Calculated MW	40451

Goat Anti-GNAI2 Antibody (internal region) - Additional Information**Gene ID** 2771**Other Names**

GNAI2; guanine nucleotide binding protein (G protein), alpha inhibiting activity polypeptide 2; GIP; GNAI2B; H_LUCA15.1; H_LUCA16.1; GTP-binding regulatory protein Gi alpha-2 chain; adenylate cyclase-inhibiting G alpha protein; guanine nucleotide-binding protein G(i) subunit alpha-2; guanine nucleotide-binding protein G(i), alpha-2 subunit

Format

Supplied at 0.5 mg/ml in Tris saline, 0.02% sodium azide, pH7.3 with 0.5% bovine serum albumin. Aliquot and store at -20°C. Minimize freezing and thawing.

Immunogen

Peptide with sequence C-PEYTGANKYDE, from the internal region of the protein sequence according to NP_002061.1; NP_001159897.1.

Storage

Maintain refrigerated at 2-8°C for up to 6 months. For long term storage store at -20°C in small aliquots to prevent freeze-thaw cycles.

Precautions

Goat Anti-GNAI2 Antibody (internal region) is for research use only and not for use in diagnostic or therapeutic procedures.

Goat Anti-GNAI2 Antibody (internal region) - Protein Information**Name** GNAI2

Synonyms GNAI2B**Function**

Guanine nucleotide-binding proteins (G proteins) are involved as modulators or transducers in various transmembrane signaling systems. The G(i) proteins are involved in hormonal regulation of adenylate cyclase: they inhibit the cyclase in response to beta- adrenergic stimuli. May play a role in cell division.

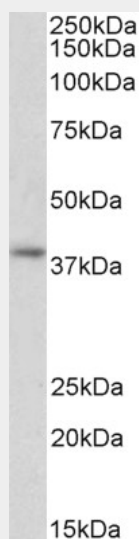
Cellular Location

Cytoplasm. Cytoplasm, cytoskeleton, microtubule organizing center, centrosome. Cell membrane. Membrane; Lipid-anchor. Note=Localizes in the centrosomes of interphase and mitotic cells. Detected at the cleavage furrow and/or the midbody

Goat Anti-GNAI2 Antibody (internal region) - Protocols

Provided below are standard protocols that you may find useful for product applications.

- [Western Blot](#)
- [Blocking Peptides](#)
- [Dot Blot](#)
- [Immunohistochemistry](#)
- [Immunofluorescence](#)
- [Immunoprecipitation](#)
- [Flow Cytometry](#)
- [Cell Culture](#)

Goat Anti-GNAI2 Antibody (internal region) - Images

AF4248a (2 µg/ml) staining of Human Peripheral Blood Lymphocytes lysate (35 µg protein in RIPA buffer). Primary incubation was 1 hour. Detected by chemiluminescence.

Goat Anti-GNAI2 Antibody (internal region) - References

G alpha i2 and ZAP-70 mediate RasGRP1 membrane localization and activation of SDF-1-induced T cell functions. Kremer KN, Kumar A, Hedin KE. J Immunol. 2011 Sep 15;187(6):3177-85.